



JON-PAUL BRAMPTON POWERED BY **exp** TM UK

@jon-paul.brampton@exp.uk.com

🌐 jonpaulbrampton.exp.uk.com

☎ 07359 015 020

Vicarage Road, Wigginton, Tring, Hertfordshire

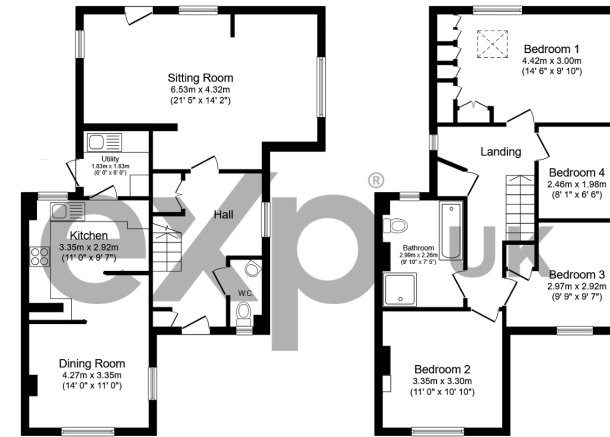
Offers Over £650,000

🛏️ 4 🚿 1 🚗 2



- Charming Victorian home
- Four bedrooms
- Driveway parking
- Close to Tring & Berkhamsted
- Watch the video tour
- Stunning Hertfordshire village setting
- Kitchen/diner
- Period features
- Countryside walks on doorstep
- Please quote JB0294 when enquiring through Rightmove or Zoopla

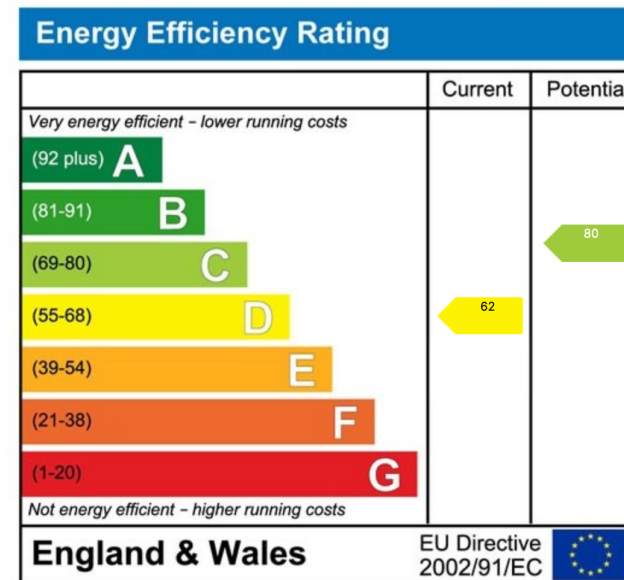




TOTAL: 122.1 m² (1,314 sq.ft.)

This floor plan is for illustrative purposes only. It is not drawn to scale. Any measurements, floor areas (including any total floor area), openings and orientations are approximate. No details are guaranteed, they cannot be relied upon for any purpose and do not form any part of any agreement. No liability is taken for any error, omission or misstatement. A party must rely upon its own inspection(s). Powered by www.PropertyBox.io

Jon-Paul Brampton presents...a slice of Victorian charm in the heart of Wigginton village.



eXp World UK Ltd is a registered company at Level 37, 25 Canada Square, London, E14 5LQ.

Registered company number is 12016573. VAT Registration Number is 327 4120 29