




# MARTIN DREW

POWERED BY  
**exp** UK

**7 Flanders Way,**  
Offers Over £450,000

 4  3  2



M: 07970663757

E: martin.drew@exp.uk.com

W: www.martin.drew.exp.uk.com



# MARTIN DREW

POWERED BY  
**exp** UK

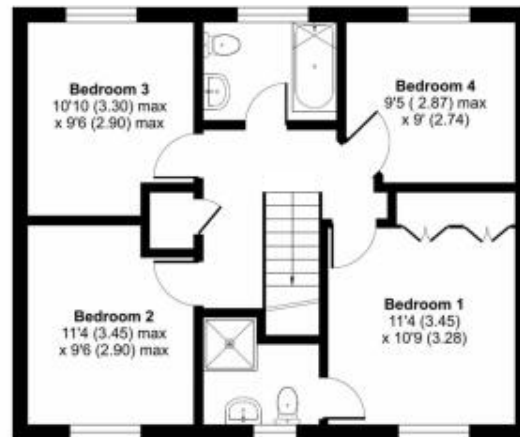
- 4 bedrooms
- Kitchen/dining room
- Master with Ensuite
- Cloakroom
- Garage with parking
- Living room with study area (previously separate Study)
- Utility room
- Family bathroom
- Private rear garden
- 

MARTIN DREW  
**exp** UK



GROUND FLOOR

Approximate Area = 1230 sq ft / 114.2 sq m  
For identification only - Not to scale



FIRST FLOOR

Simply stunning 4 bedroom detached family home with Private rear garden, Garage & Parking.

M: 07970663757

E: martin.drew@exp.uk.com

W: www.martin.drew.exp.uk.com

