



JON-PAUL BRAMPTON POWERED BY **exp** TM UK

@jon-paul.brampton@exp.uk.com

🌐 jonpaulbrampton.exp.uk.com

📞 07359 015 020

# Stadium Approach, Stoke Mandeville, Aylesbury, Buckinghamshire

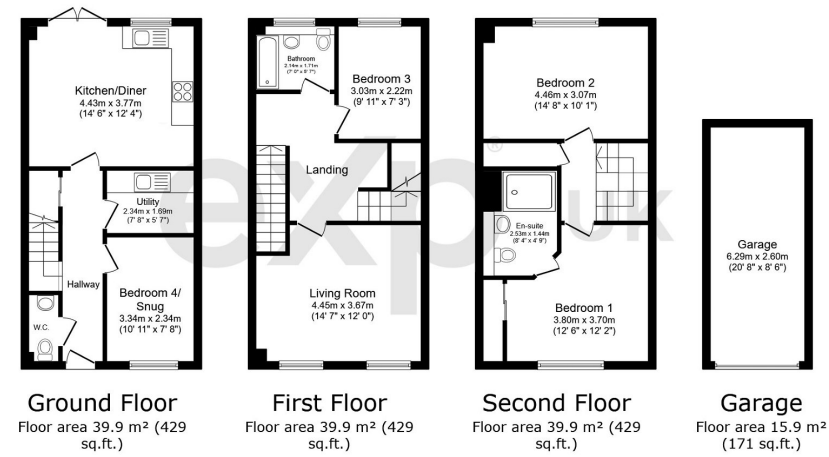
Guide Price £400,000

4 2 1



- Three / Four bedrooms
- Kitchen/diner
- Garage & parking
- Quiet but convenient location
- Watch the video tour!
- Flexible accommodation
- Main bedroom with ensuite
- No chain
- Well presented throughout
- Please quote JB0294 when enquiring through Rightmove or Zoopla

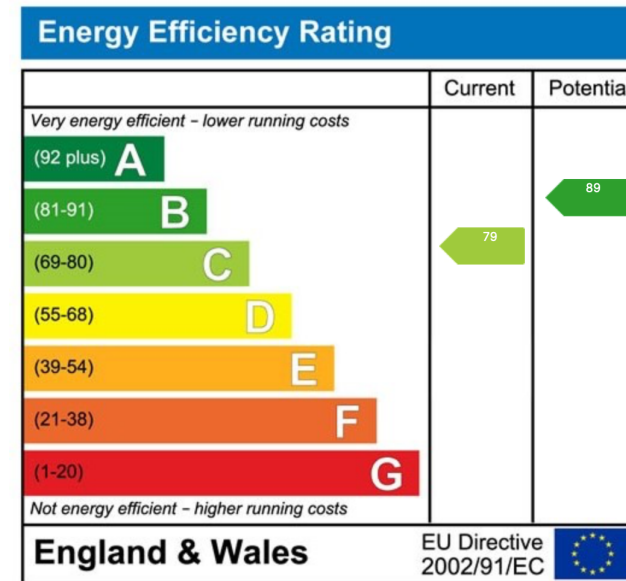




TOTAL: 135.5 m<sup>2</sup> (1,459 sq.ft.)

This floor plan is for illustrative purposes only. It is not drawn to scale. Any measurements, floor areas (including any total floor area), openings and orientations are approximate. No details are guaranteed, they cannot be relied upon for any purpose and do not form any part of any agreement. No liability is taken for any error, omission or misstatement. A party must rely upon its own inspection(s). Powered by www.Propertybox.io

Jon-Paul Brampton presents... a spacious 3/4 bedroom town house with garage in the Stoke Mandeville area of Aylesbury.



eXp World UK Ltd is a registered company at Level 37, 25 Canada Square, London, E14 5LQ.

Registered company number is 12016573. VAT Registration Number is 327 4120 29