



POWERED BY
JOE VIEIRIA **exp**™ **UK**

📞 01295 535 188 / 07796 266 529

@ joe.vieira@exp.uk.com

🌐 joevieira.exp.uk.com

3 Cattle End, Silverstone

Guide Price £1,200,000

🛏️ 5 🚪 3 🚗 3

- 5 Bedroom House
- A wealth of period features
- Generous room proportions throughout
- Sought after village location
- Detached four car garage with separate workshop
- Home office
- No onward chain
- Council Tax Band Band G
- Property Ref JV0032

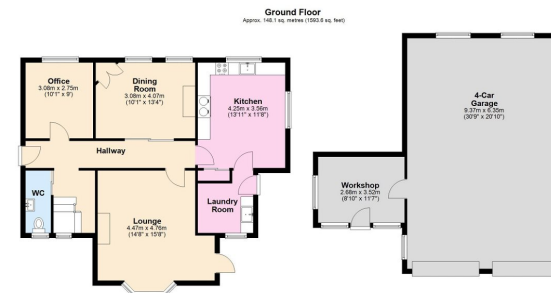


A Thoroughbred Period Property, Whether You Prefer Horsepower Measured In Single Figures Or The 1000's. This five bedroom former stable will appeal to equestrians and petrolheads alike, with a large paddock and less than 10 minutes from the F1 track.

Whether your perfect day is spent hacking along bridleways or testing your driving mettle on a track day, this substantial former stable is in the ideal Silverstone village location.

The village is less than 10 minutes drive (obeying the speed limit, of course!) from the world famous F1 circuit. And this five bedroom converted stables has everything a family needs, including a paddock measuring over two thirds of an acre.





Energy rating and score

This property's energy rating is F. It has the potential to be D.

[See how to improve this property's energy efficiency.](#)

Score	Energy rating	Current	Potential
92+	A		
81-91	B		
69-80	C		
55-68	D		66 D
39-54	E		
21-38	F	34 F	
1-20	G		

The graph shows this property's current and potential energy rating.

Properties get a rating from A (best) to G (worst) and a score. The better the rating and score, the lower your energy bills are likely to be.

For properties in England and Wales:

- the average energy rating is D
- the average energy score is 60

eXp World UK Ltd is a registered company at Level 37, 25 Canada Square, London, E14 5LQ.

Registered company number is 12016573. VAT Registration Number is 327 4120 29