

## Upper Stone Hayes, Great Linford, MK14

Offers Over £700,000

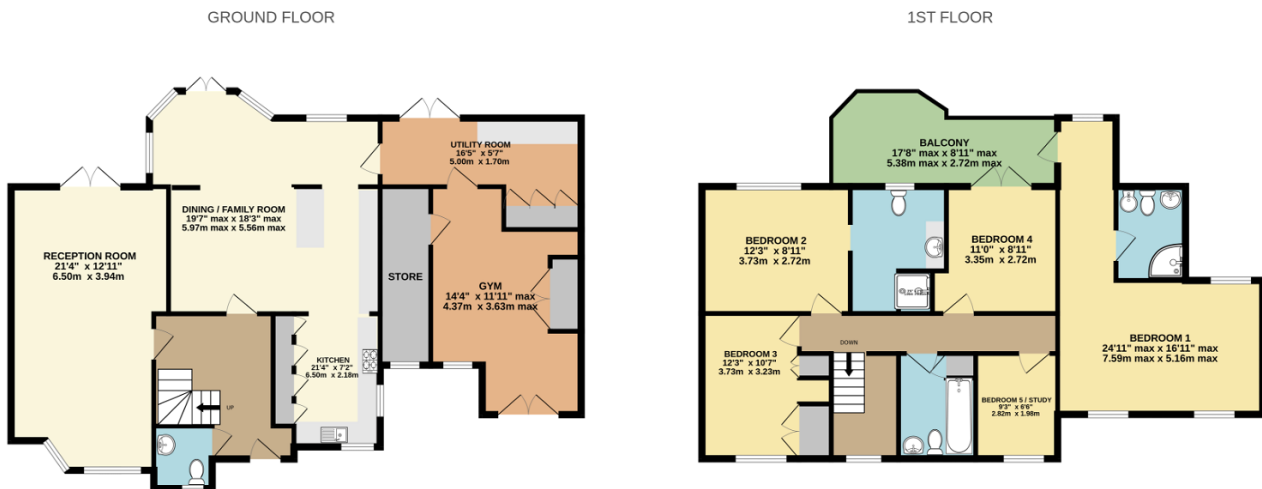
🛏️ 5 🚗 3 🛋️ 2



A stunning five bedroom detached family home (2,128 Sq.Ft), superbly situated in a sought after village location, boasting off street parking for multiple vehicles, and first floor balcony with views over a delightful landscaped garden. Offering contemporary style accommodation with stylish interiors and high quality finish, this impressive home has been beautifully modernised, updated and re-modelled, adding a luxury gym (formerly a garage) to the existing living space. Ideal for a growing family with two large reception rooms and an open plan quality fitted kitchen, the property perfectly blends comfort and convenience for a busy modern lifestyle. Further features include a generous utility room, three bath/shower rooms (two en-suite), ample inbuilt storage, gas central heating, double glazing, quality floor coverings and neutral decor.

## Key Features

- Stunning Five Bedroom Detached Family Home (2,128 Sq.Ft)
- Two Beautiful Reception Areas
- Three Bath/Shower Rooms (Two En-Suite) Plus Guest WC
- Balcony and Landscaped Garden
- Close to Local Shops, Schools and Amenities
- Sought After Residential Location
- High Spec Fitted Kitchen and Separate Utility
- Private Gym (Formerly Garage)
- Off Street Parking for Multiple Vehicles
- Please quote KM0096



TOTAL FLOOR AREA : 2128sq.ft. (197.7 sq.m.) approx.

Whilst every attempt has been made to ensure the accuracy of the floorplan contained here, measurements of doors, windows, rooms and any other items are approximate and no responsibility is taken for any error, omission or mis-statement. This plan is for illustrative purposes only and should be used as such by any prospective purchaser. The services, systems and appliances shown have not been tested and no guarantee as to their operability or efficiency can be given.

Made with Metropix ©2024