

125 Poppyfields Way, Brackley, NN13 6GA

£465,000

 4  3  3



- 4 bedrooms
- utility room
- extra reception room
- family bathroom
- private rear garden
- kitchen/dining/family room
- living room
- master with ensuite
- cloakroom
- garage with parking

M: 07970663757

E: martin.drew@exp.uk.com

W: www.martin.drew.exp.uk.com

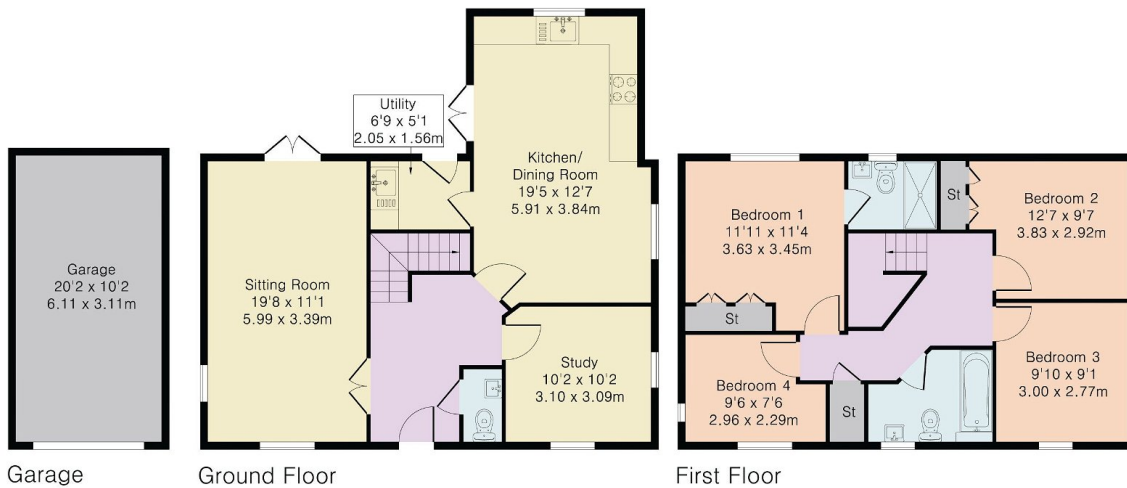


# MARTIN DREW

POWERED BY  
**exp** UK



Approximate Gross Internal Area 1539 sq ft – 143 sq m  
Ground Floor Area 725 sq ft – 67 sq m  
First Floor Area 609 sq ft – 57 sq m  
Garage Area 205 sq ft – 19 sq m



A simply stunning 4 bedroom detached family home boasting 3 reception rooms, private rear garden & garage with parking to side. A must see to appreciate size & condition. Reference MD0803

M: 07970663757

E: martin.drew@exp.uk.com

W: www.martin.drew.exp.uk.com

