

STEPHEN RIVETT



15 Marina Close,
£225,000

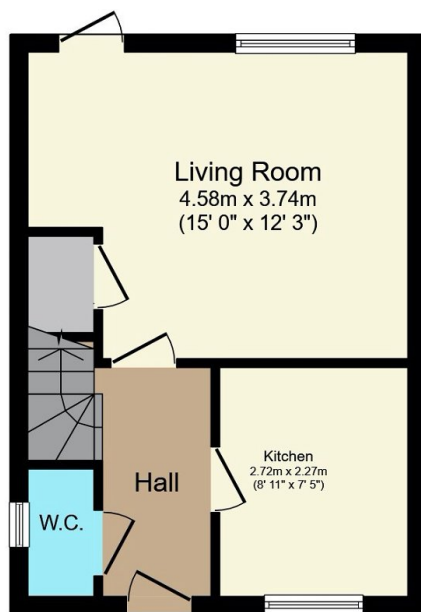
🏠 2 🚗 1 🚲 1



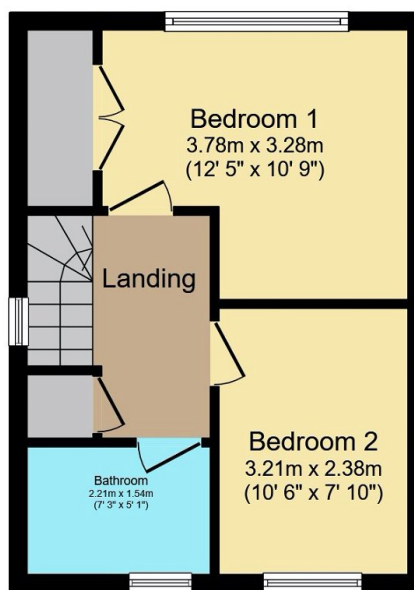
STEPHEN RIVETT



- Quote Ref: SR0694
- Semi-Detached Home
- Tandem Driveway
- Good size Rear Garden
- Double Glazed and Gas Radiator Heating
- Chain Free
- Two Bedrooms
- Lounge/Dining Room
- Built by Hopkins Homes in 2021
- Easy access to the A11 or into Thetford Town



Ground Floor



First Floor

Total floor area 60.1 sq.m. (647 sq.ft.) approx
This floor plan is for illustrative purposes only. It is not drawn to scale. Any measurements, floor areas (including any total floor area), openings and orientation are approximate. No details are guaranteed, they cannot be relied upon for any purpose and they do not form part of any agreement. No liability is taken for any error, omission or misstatement. A party must rely upon its own inspection(s). Powered by www.focalagent.com

Looking to trade up from that flat? This two bedroom semi detached house could be the one for you. With tandem driveway, front and rear gardens as well as downstairs cloakroom. The property was built by the acclaimed developer Hopkins Homes and is offered for sale Chain Free! Call today to arrange your viewing. Quote Ref: SR0694