



LEE WILKINSON

POWERED BY
exp UK

20 Broad Street, Offers Over £300,000

🛏️ 3 🚿 1 🛋️ 2

- Superbly presented home
- Three bedrooms
- Walking distance to the High Street
- Lovely Bathroom
- Great rear garden with large shed
- Great location
- Character features
- Utility Room
- Wood burning stove
- Property Ref LW0712



A superbly presented three bedroom Victorian family home, set within a desirable road, close to the Town Centre. The current owners have put their heart and soul into this stylish property, creating a wonderful space, as well as re-instating the character features of the property. Broad Street, is a tree lined no through road, and is located close to the High Street, with a short walk to the shops and leisure facilities the Town has to offer. This property is also on the 'right' side of Town, should you be needing to get into Cambridge City, for work purposes, with Saffron Walden and Bury St Edmunds also easily accessible.

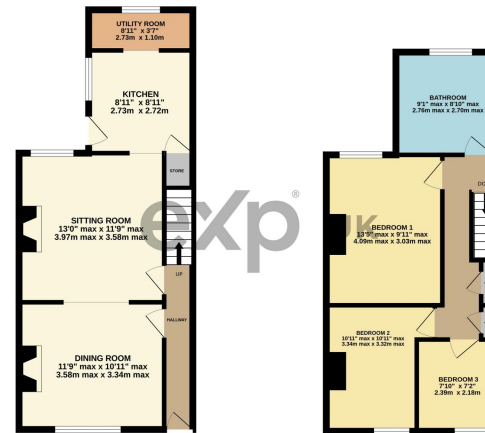
Property Ref; LW0712



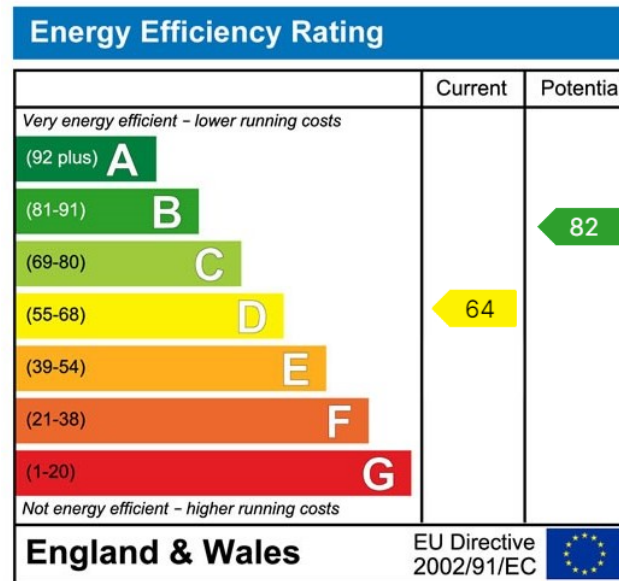


GROUND FLOOR
456 sq. ft. (42.3 sq.m.) approx.

FIRST FLOOR
427 sq. ft. (39.7 sq.m.) approx.



TOTAL FLOOR AREA: 883 sq. ft. (81.0 sq.m.) approx.
When every effort has been made to ensure the accuracy of the figures contained herein, measurements of floors, areas, volumes, etc. may vary slightly from those shown on the drawings and the actual measurements may vary from those shown on the drawings. The architect, agent and advertiser accept no liability for any errors or omissions.



LEE WILKINSON

POWERED BY
exp UK