



LEE WILKINSON

POWERED BY
exp UK

25 Nunnery Green, Wickhambrook

Offers Over £280,000

🛏️ 2 🚿 2 🛋️ 1

- Recently extended
- Two bedrooms
- Wrap around garden
- Wood burning stove
- Ref LW0712
- Great location close to amenities
- Garage
- Good access to local towns
- Kitchen to finish



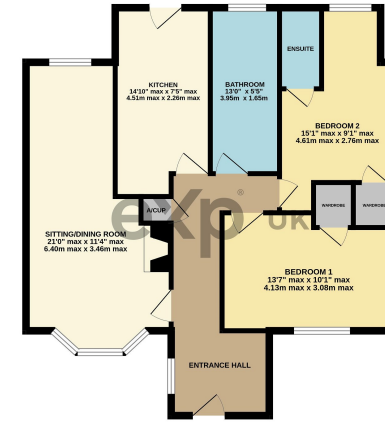
An extended two bedroom bungalow in the superb village of Wickhambrook. This property has been finished to a high standard in most areas by the current owners, with just the kitchen remaining for the new owners to finish to their own taste. This home is close to village amenities including public house, Doctors surgery, primary school and village stores. Wickhambrook is well situated for access to the local towns of Bury St Edmunds, Clare and Newmarket, as well as, slightly further afield, to Cambridge and Saffron Walden.

Ref; LW0712

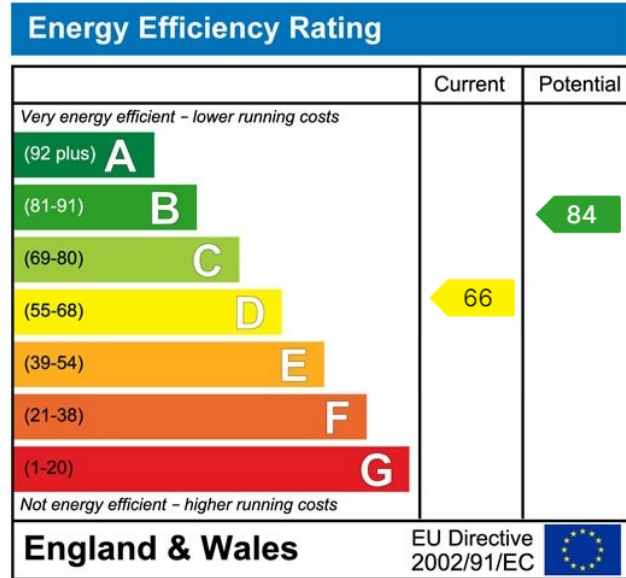




GROUND FLOOR
748 sq.ft. (69.5 sq.m.) approx.



TOTAL FLOOR AREA: 748 sq.ft. (69.5 sq.m.) approx.
 *Note: All areas have been taken to the accuracy of the British Standard. Measurements of rooms are given to the nearest foot and inch. Measurements are given to the nearest millimetre. The actual, measured and approximate areas may vary from the area shown on the floor plan. The actual, measured and approximate areas may vary from the area shown on the floor plan.



LEE WILKINSON

POWERED BY
exp UK