

Shipps Way, wigston, Leicester, LE18 3XZ

Guide Price £380,000

4 2 2

**Modern Four-Bedroom Detached Family Home • Private Garden • Wigston Meadows 1300 sq ft of accommodation**

Discover this impressive four-bedroom detached family home, ideally situated on a generous corner plot within a sought-after cul-de-sac on the contemporary Wigston Meadows development. Designed for spacious and versatile living, this home is beautifully presented throughout and perfectly suited for modern family life.

The property offers a fantastic sense of space, abundance of natural light throughout, creating a bright and inviting atmosphere.

LOUISE OWEN



@louise.owen@exp.uk.com

 louiseowen.exp.uk.com

 07774 122 959

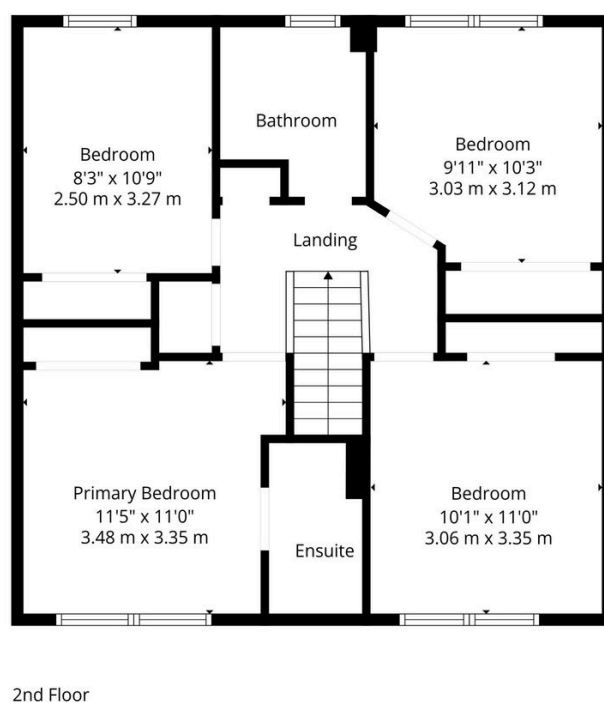
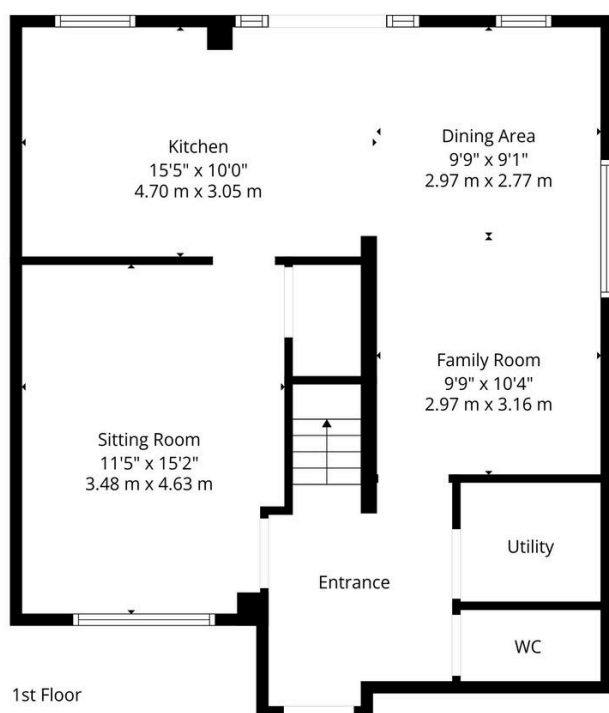
Shipps Way / Wigston Meadow forms part of the Wigston Meadows new-build community by Barratt Homes, award winning national housebuilder known for delivering modern energy-efficient homes with NHBC warranties.

Book a viewing today

Property ref LO 0765

Key Features

- Stunning Kitchen/diner entertaining area
- Popular development
- Close to countryside of South Leicestershire
- Rail connections via South Wigston railway station,
- EPC Rating B
- Private cul de sac Location
- Highly regarded local schools
- Regular bus service
- Easy road access into Leicester
- EV charging point



TOTAL: 1300 sq. ft, 121 m2
1st floor: 658 sq. ft, 61 m2, 2nd floor: 642 sq. ft, 60 m2
EXCLUDED AREAS: UTILITY: 32 sq. ft, 3 m2, WALLS: 92 sq. ft, 8 m2

Floor Plan Created By Harper & Reid. Measurements Deemed Highly Reliable But Not Guaranteed

