

The Horsepool, Lilbourne, Rugby, Warwickshire, CV23 0SU

Offers Over £495,000

4 3 2

**Stunning Four-Bedroom Detached Home in Lilbourne, Nr Rugby over 1500 Sq Ft of living space**

We are delighted to offer for sale this deceptively spacious dormer bungalow, nestled in a private position at the end of a charming gravel driveway, this beautifully renovated four-bedroom detached property is located in the highly sought-after village of Lilbourne, near Rugby, Warwickshire.

This dormer bungalow has undergone complete renovation in 2023 and boasting a thoughtfully designed and spacious layout, the home offers two double bedrooms and bathrooms on both floors, providing exceptional flexibility for families, guests, or multi-generational living.

LOUISE OWEN



@louise.owen@exp.uk.com

 louiseowen.exp.uk.com

 07774 122 959

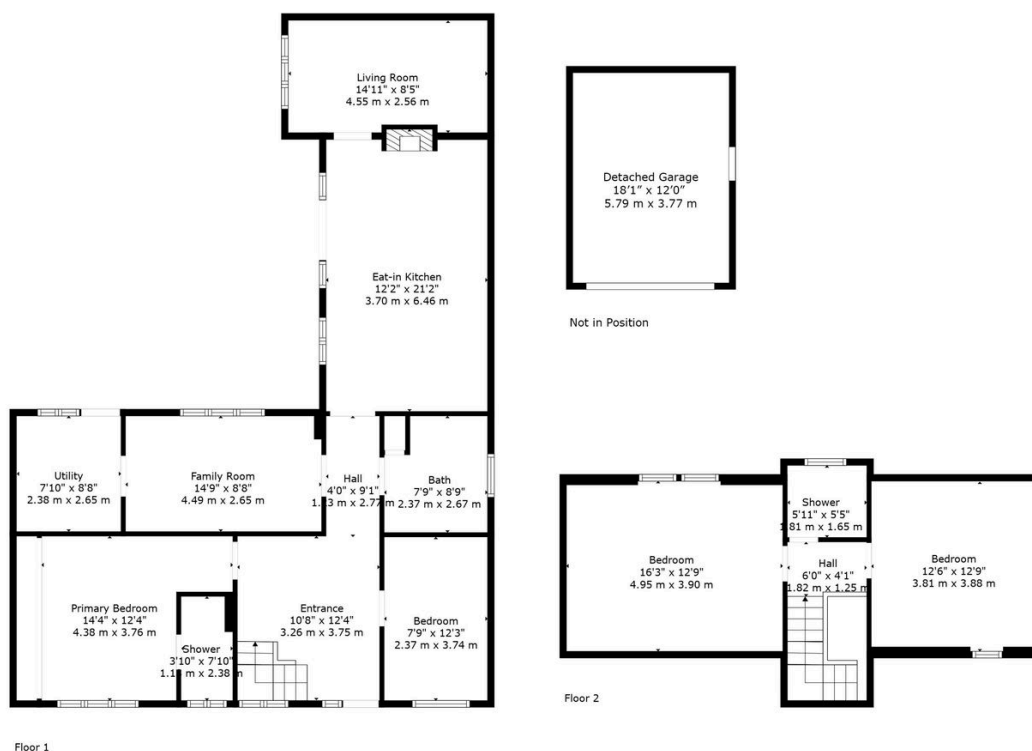
With its modern upgrades and generous living spaces, this unique family home is a must-see. Book a viewing today to experience all it has to offer!

EPC rating C

Property Ref LO 0765

Key Features

- Four Double bedrooms
- Stunning kitchen dining
- Detached single garage
- Private driveway
- Air conditioning to the first floor bedrooms
- Three Bathrooms
- Two reception rooms
- EV charging point
- Beautiful Views
- Excellent EPC rating C



TOTAL: 1501 sq. ft, 140 m²
 FLOOR 1: 1140 sq. ft, 106 m², FLOOR 2: 361 sq. ft, 34 m²
 EXCLUDED AREAS: LOW CEILING: 120 sq. ft, 10 m²
 Floor Plan Created By Harper & Reid. Measurements Deemed Highly Reliable But Not Guaranteed

