

Waters Edge, Wansford Marina, Wansford, Peterborough, PE8

Guide Price £700,000 - £725,000

4 2 2



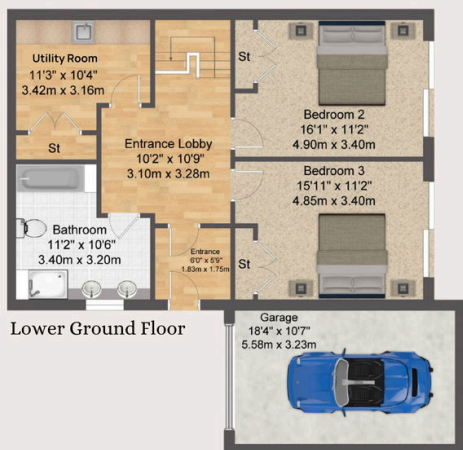
- NO CHAIN
- GATED COMMUNITY
- TOWNHOUSE, 3 VERSATILE FLOORS
- 4 DOUBLE BEDROOMS
- REF: EH1075 - ENQUIRE 24/7
- GUIDE PRICE £700,000 - £725,000
- SOUGHT AFTER WANSFORD MARINA
- PRIVATE MOORING ON THE MARINA
- SPACIOUS, CONNECTED GARAGE
- GENEROUS 2311 SQ FT SPACE

Waters Edge,
Wansford Marina
Approximate Gross
Internal Area
2311 sq ft - 214.6 sq m
(excluding garage)

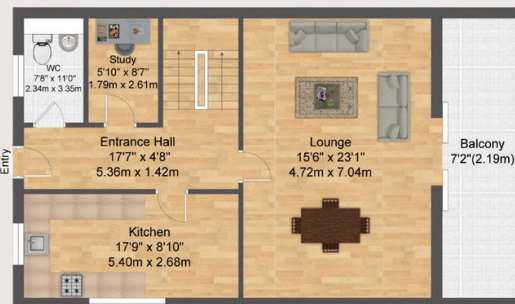


First Floor

ELLIE HINTON-BARDWELL
exp UK



Lower Ground Floor



Ground Floor

Although every attempt has been made to ensure accuracy, all measurements are approximate.
This floorplan is for illustrative purposes only and not to scale.
Measured in accordance with RICS Standards.

An IMPRESSIVE and IMMACULATELY presented four-bedroom home with an abundance of space and light, situated on the EXCLUSIVE Wansford Marina offered at a Guide Price of £700,000 - £725,000. Proudly sitting on the waters edge, offering ample parking, large garage and EV charging, this picturesque home offers highly versatile living for all the family.