

**Fairview, Church Lane, Cold Ashby**

Offers Over £450,000

4 3 2

**Fairview, Cold Ashby – Detached Four-Bedroom Home with Stunning Views - No Onward Chain**

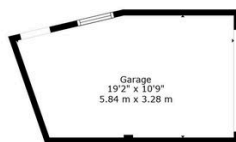
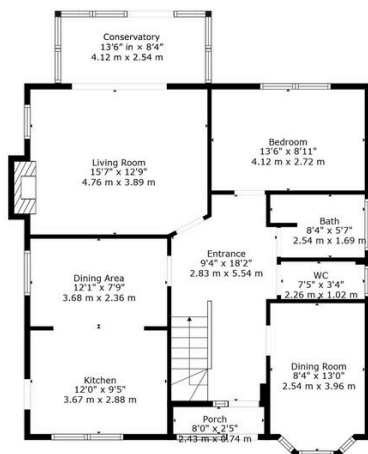
Fairview is a charming and well-loved detached four-bedroom property, beautifully positioned in the elevated and picturesque village of Cold Ashby, Northamptonshire. Surrounded by rolling countryside, the property enjoys some of the most impressive rural views in the county and offers a rare opportunity for those seeking both tranquillity and excellent connectivity. This property is offered for sale with the benefit of **no onwads chain**

This home has been meticulously maintained throughout and, while some areas would benefit from modernising and updating, it holds tremendous potential to become a magnificent family home. Its elevated position and breathtaking panoramic views over the Northamptonshire countryside make this a truly rarely available property.

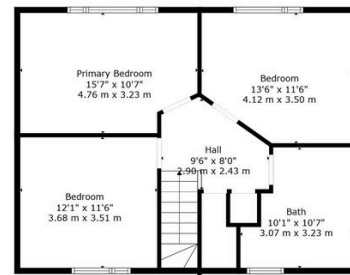
**Property ref LO 0765**

## Key Features

- Private driveway and parking, Detached garage with power and automatic door.
- Large living room with breathtaking countryside views, open fire and large conservatory overlooking the garden.
- Separate WC and family bathroom on ground floor
- Breathtaking countryside views.
- Property Ref LO 0765
- Spacious entrance porch leading into a welcoming hallway.
- Kitchen with potential for modern upgrades.
- Well-maintained oil-fired boiler and double glazing throughout.
- Close to road network links for the midlands and beyond
- Double glazing throughout



Floor 1



Floor 2

**TOTAL: 1624 sq. ft, 151 m<sup>2</sup>**  
 FLOOR 1: 991 sq. ft, 92 m<sup>2</sup>, FLOOR 2: 633 sq. ft, 59 m<sup>2</sup>  
 EXCLUDED AREAS: GARAGE: 184 sq. ft, 17 m<sup>2</sup>, PORCH: 19 sq. ft, 2 m<sup>2</sup>, FIREPLACE: 8 sq. ft, 1 m<sup>2</sup>, LOW CEILING: 29 sq. ft, 4 m<sup>2</sup>  
 WALLS: 146 sq. ft, 12 m<sup>2</sup>

Floor Plan Created By Harper & Reid. Measurements Deemed Highly Reliable But Not Guaranteed

