



Paul Cutmore Bespoke powered by **exp**[®] **UK**

Tel 07880 342188 Email paul.cutmore@exp.uk.com



Hereford Square, Bourne, Lincolnshire, PE10 0ZL

£185,000

🛏️ 2 🚿 1 🚗 1



Beautifully presented 2 bedroomed End terrace home on the popular Elsea Park development. Benefitting from two double bedrooms and two allocated parking spaces, alongside a cloakroom, kitchen/diner and private rear garden. The perfect first time buyer property, a turn key home with no work to do. call or email to arrange your viewing.

Entrance Hall

Lounge - 3.91m x 3.66m (12'10" x 12'0")

Kitchen/Diner - 3.91m x 3.33m (12'10" x 10'11")

Cloakroom

First Floor landing

Master Bedroom - 3.94m x 2.82m (12'11" x 9'3")

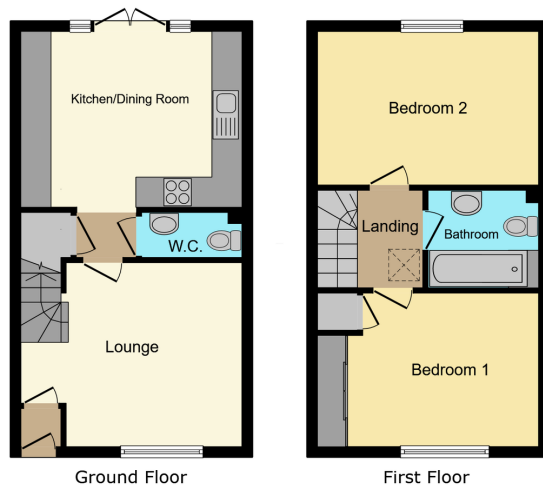
Bedroom Two - 3.91m x 2.18m (12'10" x 7'2")

Bathroom

Outside

Two allocated parking spaces to the front of the property, with well planted shrub border. The rear garden is enclosed by timber panelled fence to rear and sides, and is laid to paved patio, lawn and gravelled patio/play area. The garden also boasts a garden shed.





- End Terrace
- Two Double Bedrooms
- Kitchen/Diner
- Beautifully Presented
- Two Parking Spaces
- quote ref PC0713

This floor plan is for illustrative purposes only. It is not drawn to scale. Any measurements, floor areas (including any total floor area), openings and orientations are approximate. No details are guaranteed, they cannot be relied upon for any purpose and do not form any part of any agreement. No liability is taken for any error, omission or misstatement. A party must rely upon its own inspection(s). Powered by www.propertybox.co.uk



PAUL CUTMORE

