

Your Logo

Carlyle Road West Bridgford

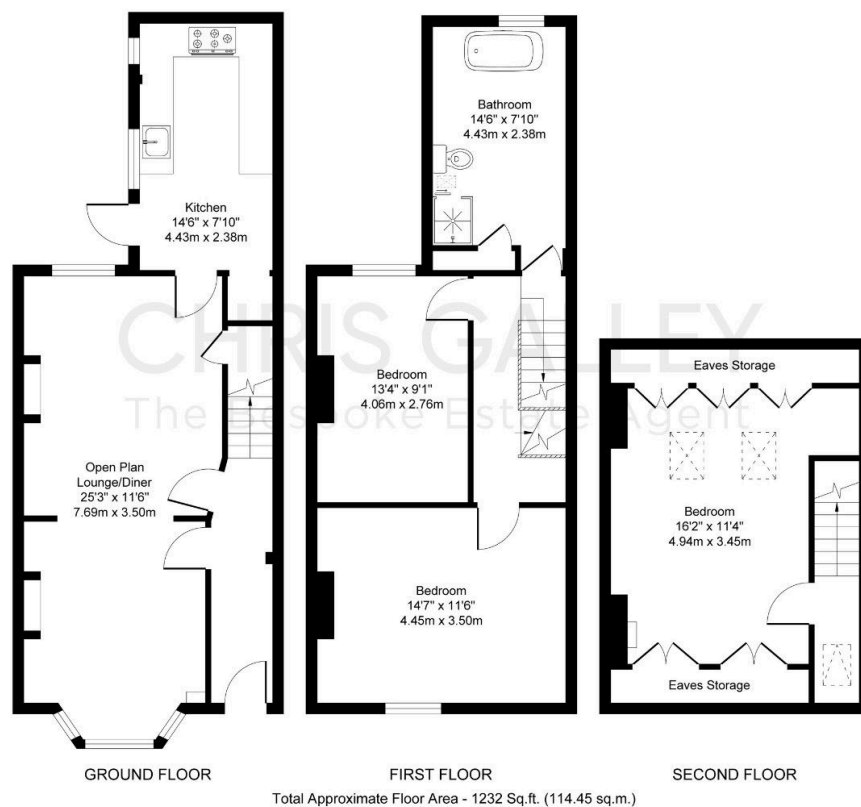
Guide Price £400,000

🛏 3 🚿 1 🚲 2



Your Logo

- 3 Double Bedrooms
- Open Plan Living
- Modern & Traditional Features
- Log Burner
- Private Rear Garden
- Semi Detached Family Home
- New Bespoke Bathroom
- Expertly Maintained Throughout
- Exposed Brick Fireplaces
- Central West Bridgford Location



REF: CG0973

OPEN DAY - Saturday 8th February - By Appointment Only!

This exceptional Victorian semi-detached home on Carlyle Road offers a rare opportunity to acquire a property that effortlessly blends period charm with modern sophistication. With three

Your Logo

spacious double bedrooms, an elegant open-plan living space, a luxurious bathroom, and a private suntrap garden, this home is perfectly suited for families, professionals, and those seeking the best of West Bridgford living.

The current owners have lovingly upgraded and maintained this property, ensuring it is presented to the highest standard. Early viewing is highly recommended to fully appreciate the unique charm and quality of this magnificent home.

For further information or to arrange a viewing on the planned open day, please contact us today.