



## £220,000 Leasehold

Severus House, Varcoe Gardens, Hayes, UB3

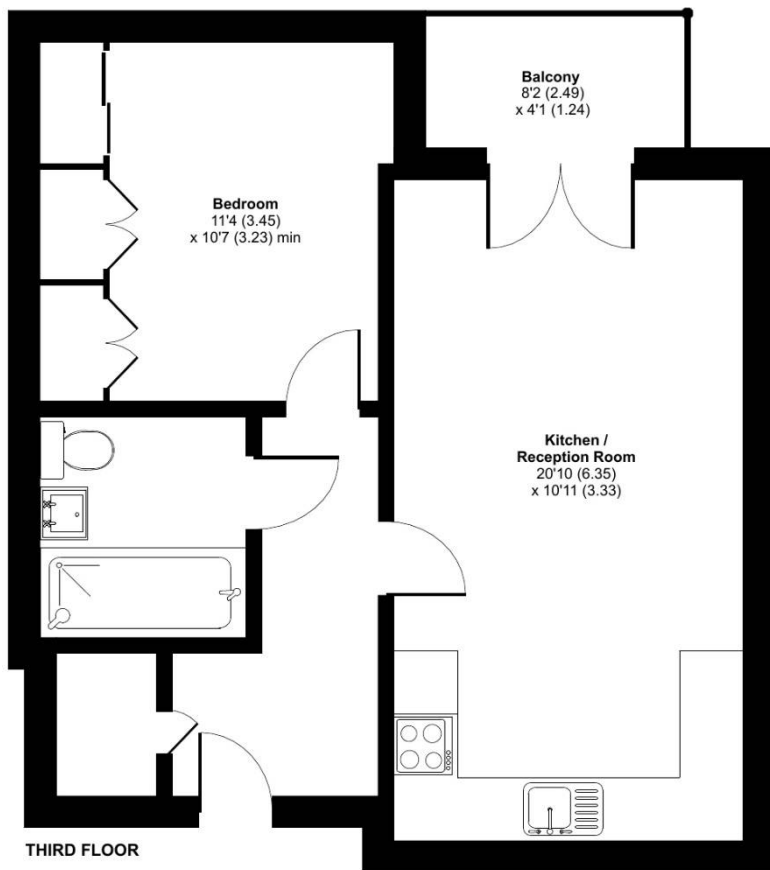
Spacious One-Bedroom Flat in Sought-After Location! Simple Estate Agents are delighted to offer this charming one-bedroom apartment, situated in a highly desirable residential area. This well-presented property features a secure telephone entry system, allocated parking, and a bright open-plan lounge and kitchen leading to a private balcony. Residents also enjoy access to a communal rooftop space, perfect for relaxing. Conveniently located near schools, bus stops, and local shops. Don't miss out - call today to arrange a viewing!

# Severus House, Varcoe Gardens, Hayes, UB3

## Severus House, Varcoe Gardens, Hayes, UB3

Approximate Area = 493 sq ft / 45.8 sq m

For identification only - Not to scale



**RICS Certified Property Measurer** Floor plan produced in accordance with RICS Property Measurement Standards incorporating International Property Measurement Standards (IPMS2 Residential). © ncheom 2024. Produced for Simple Estate Agents. REF: 1192956

Energy Efficiency Rating		
	Current	Potential
Very energy efficient - lower running costs		
(92-100) <b>A</b>		
(81-91) <b>B</b>	<b>82</b>	<b>82</b>
(69-80) <b>C</b>		
(55-68) <b>D</b>		
(39-54) <b>E</b>		
(21-38) <b>F</b>		
(1-20) <b>G</b>		
Not energy efficient - higher running costs		
<b>England, Scotland &amp; Wales</b>	EU Directive 2002/91/EC	

### Directions

UB3 3ES Coldharbour Ln, Hayes ? Continue to Botwell Ln 3 min (0.7 mi) ?  
Continue on Botwell Ln. Take Judge Heath Ln to Varcoe Gardens 3 min (0.7 mi)  
UB3 2FJ Hayes

Environmental Impact (CO <sub>2</sub> ) Rating		
	Current	Potential
Very environmentally friendly - lower CO <sub>2</sub> emissions		
(92-100) <b>A</b>		
(81-91) <b>B</b>	<b>82</b>	<b>82</b>
(69-80) <b>C</b>		
(55-68) <b>D</b>		
(39-54) <b>E</b>		
(21-38) <b>F</b>		
(1-20) <b>G</b>		
Not environmentally friendly - higher CO <sub>2</sub> emissions		
<b>England, Scotland &amp; Wales</b>	EU Directive 2002/91/EC	

General: While we endeavour to make our sales particulars fair, accurate and reliable, they are only a general guide to the property and, accordingly, if there is any point which is of particular importance to you, please contact the office and we will be pleased to check the position for you, especially if you are contemplating travelling some distance to view the property. Measurements: These approximate room sizes are only intended as general guidance. You must verify the dimensions carefully before ordering carpets or any built-in furniture. Services: Please note we have not tested the services or any of the equipment or appliances in this property, accordingly we strongly advise prospective buyers to commission their own survey or service reports before finalizing their offer to purchase. THESE PARTICULARS ARE ISSUED IN GOOD FAITH BUT DO NOT CONSTITUTE REPRESENTATIONS OF FACT OR FORM PART OF ANY OFFER OR CONTRACT. THE MATTERS REFERRED TO IN THESE PARTICULARS SHOULD BE INDEPENDENTLY VERIFIED BY PROSPECTIVE BUYERS OR TENANTS. NEITHER SIMPLE ESTATE AGENTS NOR ANY OF ITS EMPLOYEES OR AGENTS HAS ANY AUTHORITY TO MAKE OR GIVE ANY REPRESENTATION OR WARRANTY WHATEVER IN RELATION TO THIS PROPERTY.