

GUIDE PRICE

£250,000-£260,000

4 Acanthus Court

Whiteley, PO15 7DB

PROPERTY SUMMARY

Situated within close proximity to Whiteley Shopping Centre and local amenities, this two bedroom mid terrace home is now available to the market! The ground floor features a spacious lounge and dining room, a fitted kitchen and a convenient WC. Upstairs offers two double bedrooms and a modern family bathroom. Externally, you'll find a west facing rear garden and allocated parking to the front. Call us now to arrange your viewing.





LOUNGE/DINER 16' 1" x 12' 9" (4.9m x 3.89m)

REAR LOBBY

KITCHEN 8' 0" x 6' 0" (2.44m x 1.83m)

WC

LANDING

BEDROOM 1 12' 9" x 9' 5" (3.89m x 2.87m)

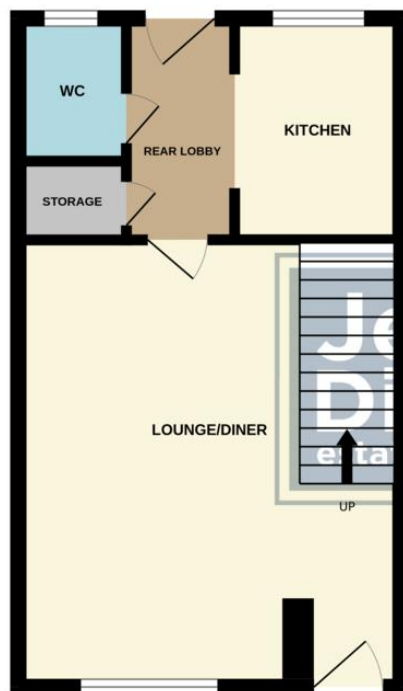
BEDROOM 2 12' 9" x 8' 4" (3.89m x 2.54m)

BATHROOM

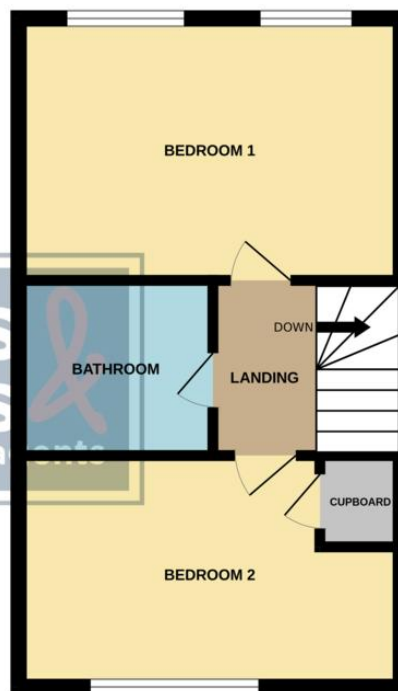
REAR GARDEN



GROUND FLOOR



1ST FLOOR



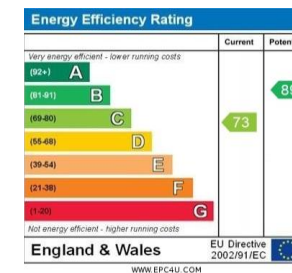
Whilst every attempt has been made to ensure the accuracy of the floorplan contained here, measurements of doors, windows, rooms and any other items are approximate and no responsibility is taken for any error, omission or mis-statement. This plan is for illustrative purposes only and should be used as such by any prospective purchaser. The services, systems and appliances shown have not been tested and no guarantee as to their operability or efficiency can be given.
Made with Metropix ©2025

LOCAL AUTHORITY
Winchester City Council

TENURE
Freehold

COUNCIL TAX BAND
Band C

VIEWINGS
By prior appointment only



Agents Note: Whilst every care has been taken to prepare these particulars, they are for guidance purposes only. All measurements are approximate and are for general guidance purposes only and whilst every care has been taken to ensure their accuracy, they should not be relied upon and potential buyers/tenants are advised to recheck the measurements.

As part of our legal obligations under the **Money Laundering, Terrorist Financing and Transfer of Funds (Information on the Payer) Regulations 2017**, we are required to conduct an **electronic identity verification check** on all purchasers. Please note that this is **not a credit check** and will **not affect your credit history** in any way. Purchasers are required to make a one off payment of £24 inc VAT to facilitate this requirement.

**Jeffries
Dibbens**
estate and letting agents

OFFICE ADDRESS

6 West Quay House, 20 West
Street, Fareham, Hampshire,
PO16 0LG

CONTACT

01329 888 328
fareham@dibbensproperty.co.uk
www.jdea.co.uk