



7 Sandy Brow

, Waterlooville, PO7 5JP

Asking price £350,000

We are delighted to bring to market this well sized semi-detached home situated in Sandy Brow. Boasting three double bedrooms with shower room En-suite to master, two reception rooms and kitchen, a large garden and driveway. This is an excellent family home.

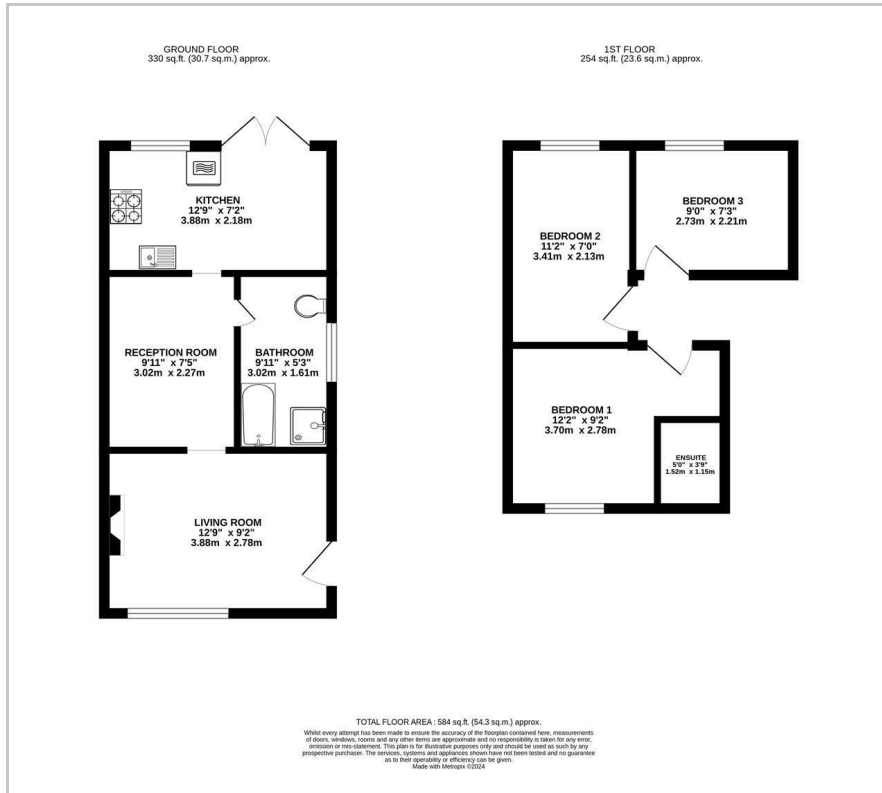
- Semi Detached Home
- Three Bedrooms
- Driveway
- Large Garden
- Sought After Location
- Close to Local Amenities

Viewing

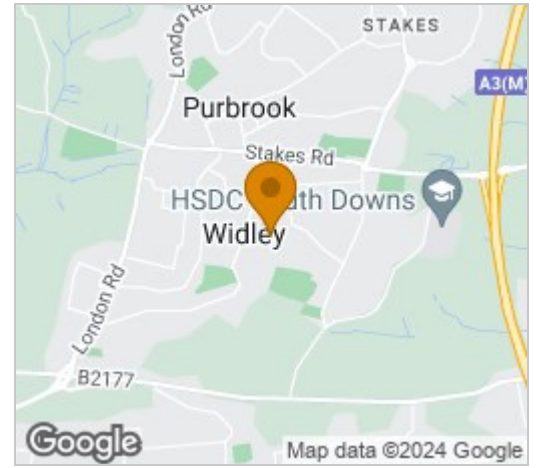
Please contact our ROK Marsh Office on 02393233267 if you wish to arrange a viewing appointment for this property or require further information.



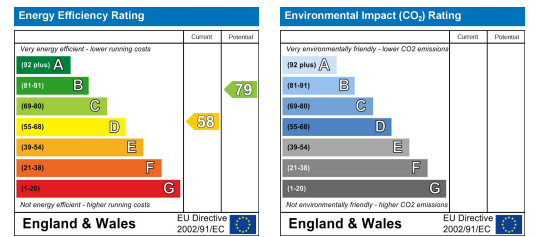
Floor Plan



Area Map



Energy Efficiency Graph



These particulars, whilst believed to be accurate are set out as a general outline only for guidance and do not constitute any part of an offer or contract. Intending purchasers should not rely on them as statements of representation of fact, but must satisfy themselves by inspection or otherwise as to their accuracy. No person in this firm's employment has the authority to make or give any representation or warranty in respect of the property.