



1 Welch Road

, Gosport, PO12 4PY

Offers over £280,000

Welcome to Welch Road, Gosport - a charming property that offers a perfect blend of modern living and traditional charm. This delightful house boasts two reception rooms, three bedrooms, and a beautifully refurbished bathroom as well as downstairs W.C.

This property has been recently renovated to a high standard, presenting a modern and fresh interior that is sure to impress. The oak staircase and doors add a touch of elegance and character to the home, creating a warm and inviting atmosphere.

Convenience is key with off-street parking available for 2/3 vehicles, ensuring you never have to worry about finding a space after a long day. The low-maintenance private garden provides a tranquil outdoor space where you can relax and unwind.

Whether you're looking to host gatherings in the spacious reception rooms or retreat to one of the three comfortable bedrooms, this property offers versatility for all your lifestyle needs. Don't miss the opportunity to make this house your home in the heart of Gosport.

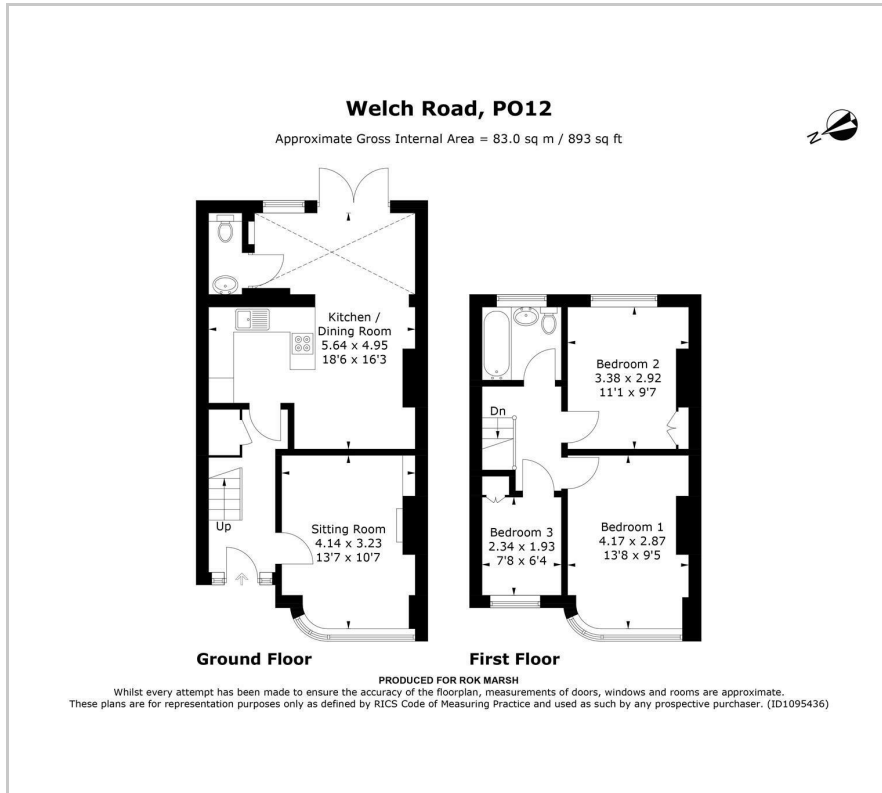
- Freshly Renovated & Beautifully Presented
- Off Street Parking
- Low Maintenance Private Garden
- Oak Staircase & Doors
- Modern Kitchen, Bathroom & Downstairs W.C.
- Low Cost Council Tax & Utilities
- Easy Reach of Town Centre, Shops & Amenities
- Close to Gosport Ferry to Portsmouth

Please contact our ROK Marsh Office on 02393233267 if you wish to arrange a viewing appointment for this property or require further information.

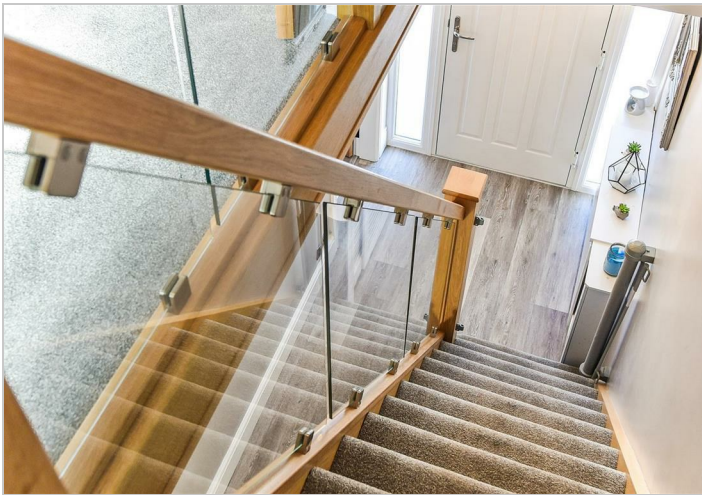


Floor Plan

Area Map



Energy Efficiency Graph



These particulars, whilst believed to be accurate are set out as a general outline only for guidance and do not constitute any part of an offer or contract. Intending purchasers should not rely on them as statements of representation of fact, but must satisfy themselves by inspection or otherwise as to their accuracy. No person in this firm's employment has the authority to make or give any representation or warranty in respect of the property.