



188 Guildford Road

, Portsmouth, PO1 5BE

£225,000

NO FORWARD CHAIN | INVESTMENT PURCHASE WITH TENANTS IN SITU | We are delighted to bring to market this terraced home situated in Guildford Road. Featuring two double bedrooms, living room with additional dining room, modern kitchen and bathroom. This is an ideal investment purchase.

- Great Investment Purchase
- Two Double Bedrooms
- Close to Local Amenities & Transport Links
- Short Distance from City Centre

Viewing

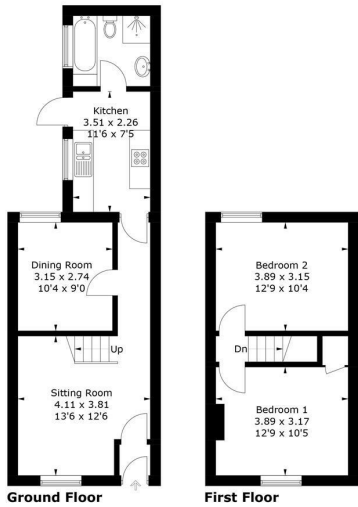
Please contact our ROK Marsh Office on 02393233267 if you wish to arrange a viewing appointment for this property or require further information.



Floor Plan

Guilford Road, PO1

Approximate Gross Internal Area = 70.3 sq m / 757 sq ft

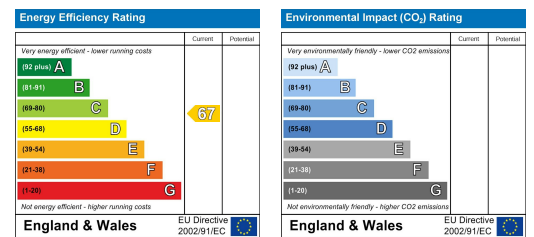


PRODUCED FOR ROK MARSH
 Whilst every attempt has been made to ensure the accuracy of the floorplan, measurements of doors, windows and rooms are approximate. These plans are for representation purposes only as defined by RICS Code of Measuring Practice and used as such by any prospective purchaser. (ID1100157)

Area Map



Energy Efficiency Graph



These particulars, whilst believed to be accurate are set out as a general outline only for guidance and do not constitute any part of an offer or contract. Intending purchasers should not rely on them as statements of representation of fact, but must satisfy themselves by inspection or otherwise as to their accuracy. No person in this firm's employment has the authority to make or give any representation or warranty in respect of the property.