



53 Glasgow Road

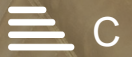
, Southsea, PO4 8HR

Offers in excess of £270,000

Two Double Bedrooms | South Facing, Low Maintenance Garden With Bar | Newly Renovated Open Plan Kitchen / Diner with Feature Beams | Newly Renovated Bathroom | Backs Onto Bransbury Park | EPC Rating C and Tax Band B | Popular Residential Southsea Location | Fantastic First Time Purchase or Investment

- Two Double Bedrooms with Built in Wardrobes
- South Facing, Low Maintenance Garden With BAR, electrical points and shed
- Newly Renovated Open Plan Kitchen / Diner with Feature Beams
- Newly Renovated Bathroom
- Popular Residential Southsea Location
- Backs Onto Bransbury Park ; providing views of and meaning not over looked at the rear
- Fantastic First Time Purchase or Investment
- EPC Rating C and Tax Band B

Please contact our ROK Marsh Office on 02393233267 if you wish to arrange a viewing appointment for this property or require further information.



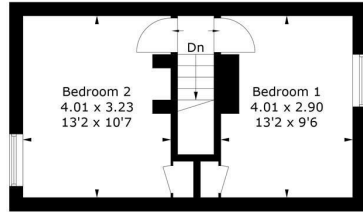
Floor Plan

Glasgow Road Southsea, PO4

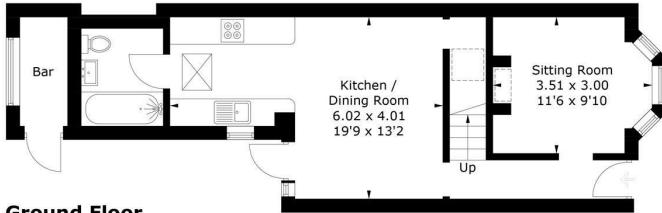
Approximate Gross Internal Area = 69.9 sq m / 752 sq ft
 Bar = 2.6 sq m / 28 sq ft
 Total = 72.5 sq m / 780 sq ft



= Reduced headroom below 1.5m / 5'0"



First Floor



Ground Floor

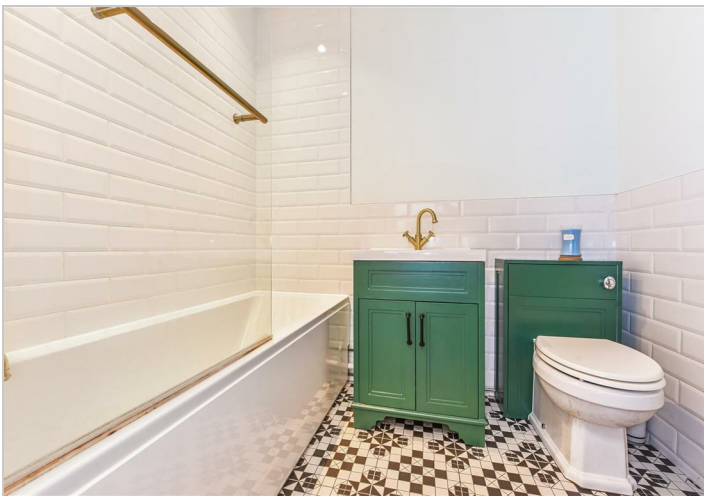
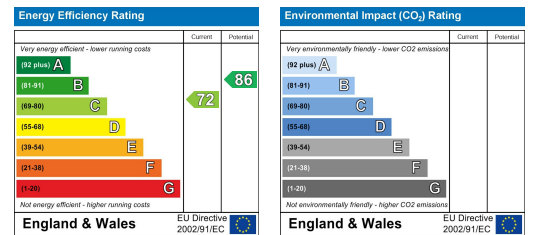
PRODUCED FOR ROK MARSH

Whilst every attempt has been made to ensure the accuracy of the floorplan, measurements of doors, windows and rooms are approximate. These plans are for representation purposes only as defined by RICS Code of Measuring Practice and used as such by any prospective purchaser. (ID1083550)

Area Map



Energy Efficiency Graph



These particulars, whilst believed to be accurate are set out as a general outline only for guidance and do not constitute any part of an offer or contract. Intending purchasers should not rely on them as statements of representation of fact, but must satisfy themselves by inspection or otherwise as to their accuracy. No person in this firm's employment has the authority to make or give any representation or warranty in respect of the property.