



22a Langley Road

, Portsmouth, PO2 7PU

Offers in excess of £200,000

We are delighted to bring you this fully refurbished & modernised 2 bed end of terraced home, now available with **NO FORWARD CHAIN**.

Benefitting from a spacious lounge / dining space, new kitchen & bathroom suites, low maintenance private garden with two double bedrooms, with the addition of being close to local amenities, schools and shops with ease of commuter routes, makes this a must see.

- NO FORWARD CHAIN
- Fully Refurbished Throughout
- Private Garden
- Modern Kitchen
- New Bathroom Suite
- Two Double Bedrooms
- Central Portsmouth Location
- Local Shops, Schools & Amenities close by

Please contact our ROK Marsh Office on 02393233267 if you wish to arrange a viewing appointment for this property or require further information.



2



1

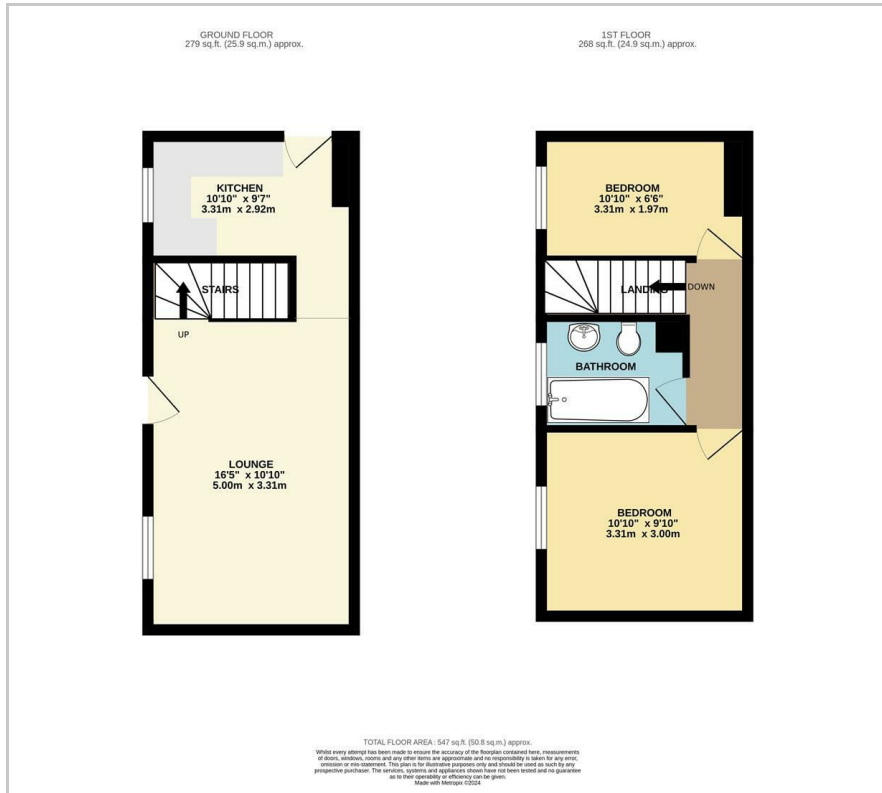


1



D

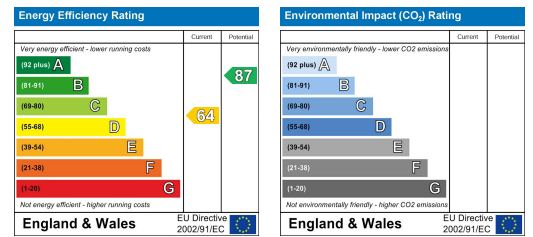
Floor Plan



Area Map



Energy Efficiency Graph



These particulars, whilst believed to be accurate are set out as a general outline only for guidance and do not constitute any part of an offer or contract. Intending purchasers should not rely on them as statements of representation of fact, but must satisfy themselves by inspection or otherwise as to their accuracy. No person in this firm's employment has the authority to make or give any representation or warranty in respect of the property.