



38 Amberley Road

, Portsmouth, PO2 0TG

Guide price £350,000

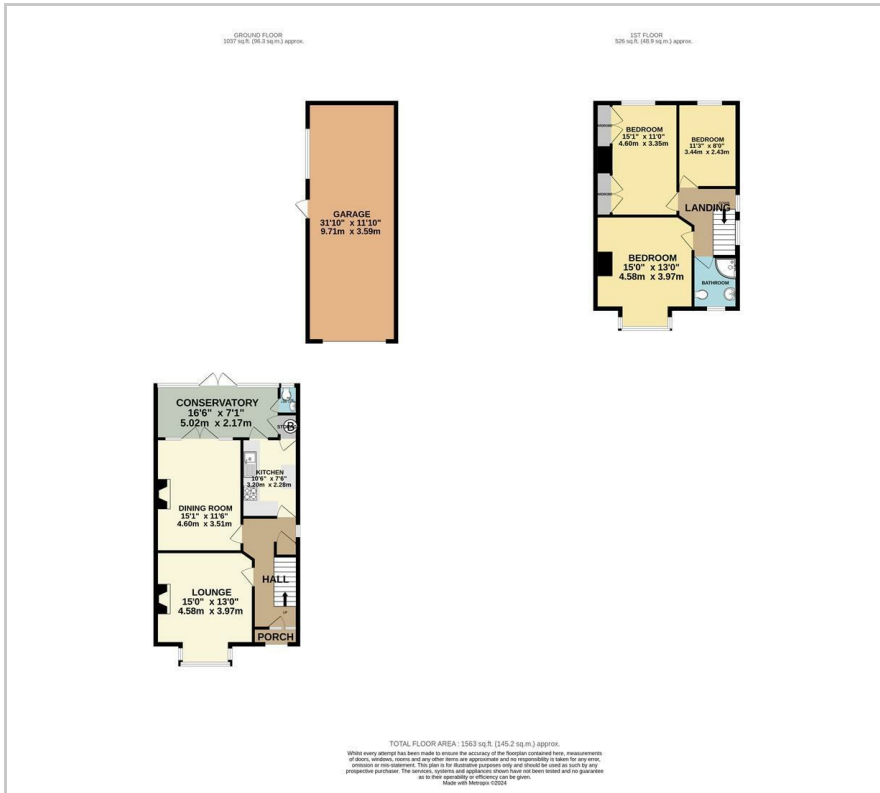
This charming semi-detached 3-bedroom home situated in a popular location boasts warmth and character. This property has been maintained to a wonderful standard complementing many original features.

- Tandem Garage With Light And Power
- Large Semi Detached
- Charming Character With Period Features
- Popular Location
- Three Double Bedrooms
- Spacious Conservatory
- Solar Panels Provide Low Energy
- Great Local Amenities
- South Facing Garden
- EPC Rating C

Please contact our ROK Marsh Office on 02393233267 if you wish to arrange a viewing appointment for this property or require further information.



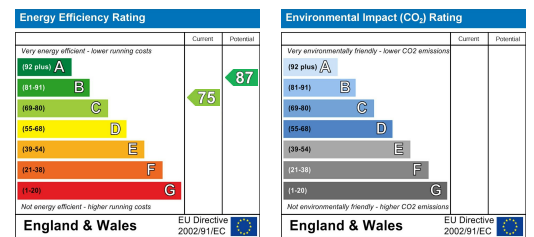
Floor Plan



Area Map



Energy Efficiency Graph



These particulars, whilst believed to be accurate are set out as a general outline only for guidance and do not constitute any part of an offer or contract. Intending purchasers should not rely on them as statements of representation of fact, but must satisfy themselves by inspection or otherwise as to their accuracy. No person in this firm's employment has the authority to make or give any representation or warranty in respect of the property.