



6 Pleasant Road

, Southsea, PO4 8JU

Guide price £245,000

Unexpectedly re-available due to bottom of the chain falling through ** NO ONWARD CHAIN ** | Two Double Bedrooms | Two Reception Rooms | Downstairs W.C. | Upstairs Bathroom | Newer Kitchen and Boiler | Cul-De-Sac Location | Close to bus links and major transport links | EPC Rating D

- Two Double Bedrooms
- Two Reception Rooms
- Downstairs W.C.
- Upstairs Bathroom
- CHAIN FREE
- Cul-De-Sac Location
- Close to bus links and major transport links
- Newer Kitchen and Boiler

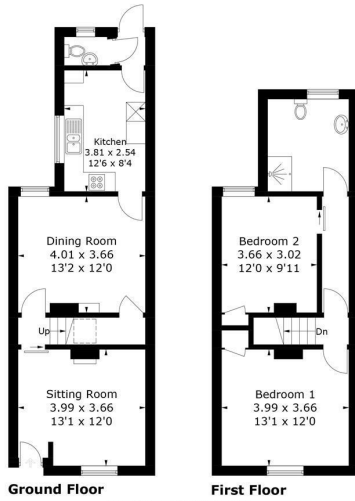
Please contact our ROK Marsh Office on 02393233267 if you wish to arrange a viewing appointment for this property or require further information.



Floor Plan

Pleasant Road, Southsea, PO4

Approximate Gross Internal Area = 88.1 sq m / 948 sq ft

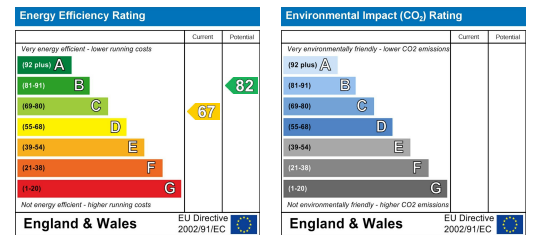


PRODUCED FOR ROK MARSH
 Whilst every attempt has been made to ensure the accuracy of the floorplan, measurements of doors, windows and rooms are approximate. These plans are for representation purposes only as defined by RICS Code of Measuring Practice and used as such by any prospective purchaser. (ID1068910)

Area Map



Energy Efficiency Graph



These particulars, whilst believed to be accurate are set out as a general outline only for guidance and do not constitute any part of an offer or contract. Intending purchasers should not rely on them as statements of representation of fact, but must satisfy themselves by inspection or otherwise as to their accuracy. No person in this firm's employment has the authority to make or give any representation or warranty in respect of the property.