



18 Velder Avenue

, Southsea, PO4 8RT

Offers in the region of £245,000

We are pleased to bring to the market this 3 bedroom mid terraced property located on Velder Avenue, Milton.

- 3 Bedroom House
- South Facing Rear Garden
- Fitted Kitchen
- First Floor Bathroom
- Council Tax Band A

Viewing

Please contact our ROK Marsh Office on 02393233267 if you wish to arrange a viewing appointment for this property or require further information.



3



1

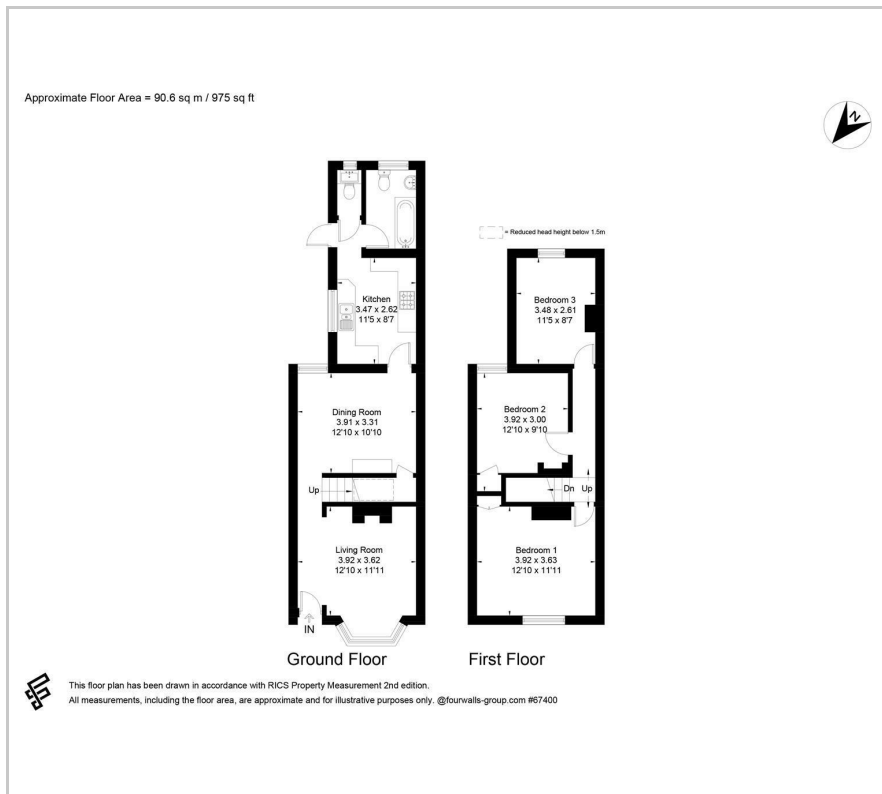


2



E

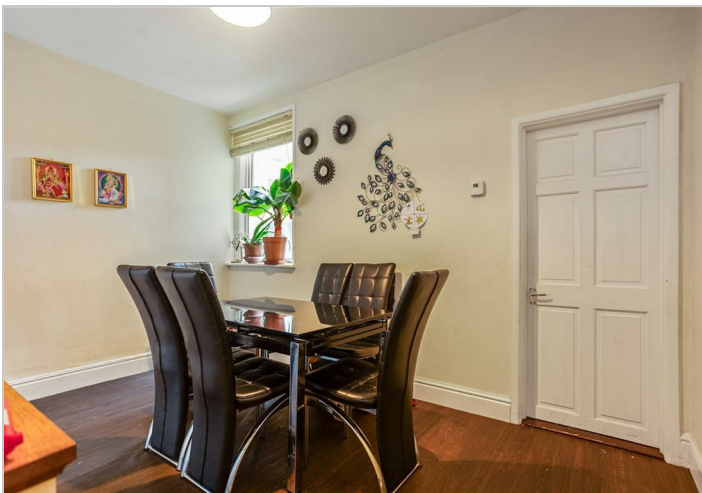
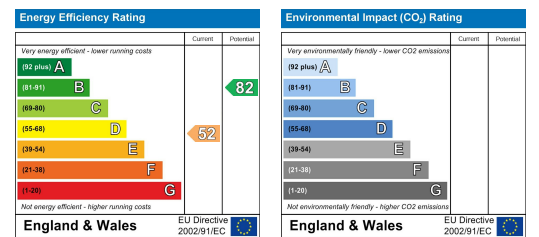
Floor Plan



Area Map



Energy Efficiency Graph



These particulars, whilst believed to be accurate are set out as a general outline only for guidance and do not constitute any part of an offer or contract. Intending purchasers should not rely on them as statements of representation of fact, but must satisfy themselves by inspection or otherwise as to their accuracy. No person in this firm's employment has the authority to make or give any representation or warranty in respect of the property.