



## 20 Vian Road

, Waterlooville, PO7 5TW

**Offers in excess of £365,000**

We are delighted to present to you this spacious semi detached home. Boasting four bedrooms, three bathrooms and a large kitchen / diner, situated in a popular location, this make a perfect family home.

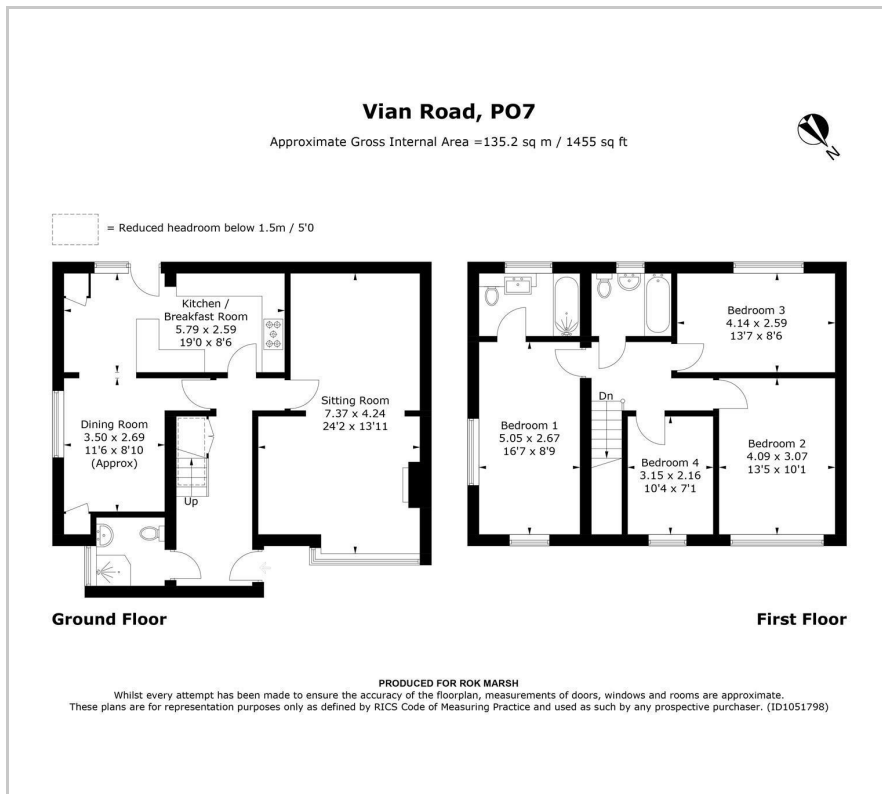
- Semi Detached
- Four Bedrooms
- Three Bathrooms
- L Shape Garden
- Large Kitchen/Diner
- Side Access
- South Facing Garden
- Large Corner Plot

Please contact our ROK Marsh Office on 02393233267 if you wish to arrange a viewing appointment for this property or require further information.

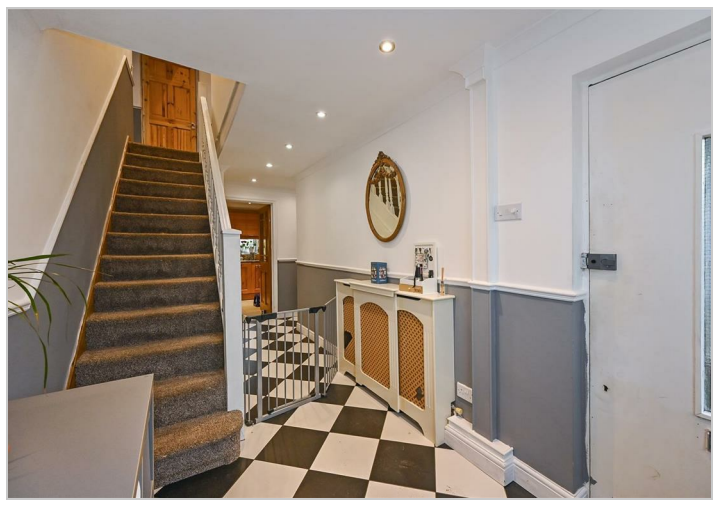
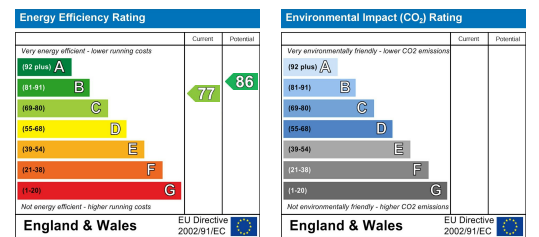


# Floor Plan

# Area Map



# Energy Efficiency Graph



These particulars, whilst believed to be accurate are set out as a general outline only for guidance and do not constitute any part of an offer or contract. Intending purchasers should not rely on them as statements of representation of fact, but must satisfy themselves by inspection or otherwise as to their accuracy. No person in this firm's employment has the authority to make or give any representation or warranty in respect of the property.