



218 New Road
, Portsmouth, PO2 7RW

Offers in excess of £155,000

We are delighted to bring you this well presented, deceptively spacious 2 bed ground floor flat with private south facing garden with a modern finish throughout, located in the heart of Portsmouth, close to all local shops, amenities and schools, as well as on main routes for buses into the city.

With this home all on one level, making access easy, as well as low cost utilities, council tax band A, this home is great for first time buyers, down sizers and also for good rental returns for investors.

- New Flat Roof
- South Facing Private Garden
- Low Running Costs
- Modern Kitchen & Bathroom
- Close to Shops & Amenities
- Along Main Bus Route
- Deceptively Large
- Good Rental returns for Investors

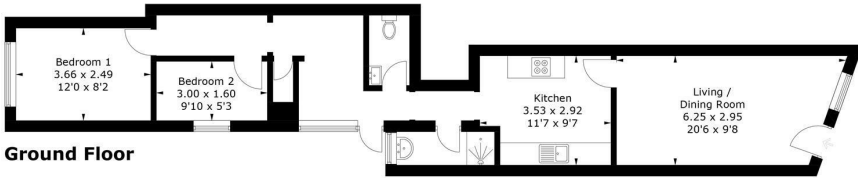
Please contact our ROK Marsh Office on 02393233267 if you wish to arrange a viewing appointment for this property or require further information.



Floor Plan

New Road, PO2

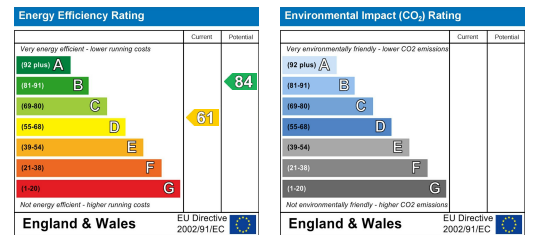
Approximate Gross Internal Area = 61.3 sq m / 660 sq ft



Area Map



Energy Efficiency Graph



PRODUCED FOR ROK MARSH
 Whilst every attempt has been made to ensure the accuracy of the floorplan, measurements of doors, windows and rooms are approximate. These plans are for representation purposes only as defined by RICS Code of Measuring Practice and used as such by any prospective purchaser. (ID1047516)



These particulars, whilst believed to be accurate are set out as a general outline only for guidance and do not constitute any part of an offer or contract. Intending purchasers should not rely on them as statements of representation of fact, but must satisfy themselves by inspection or otherwise as to their accuracy. No person in this firm's employment has the authority to make or give any representation or warranty in respect of the property.