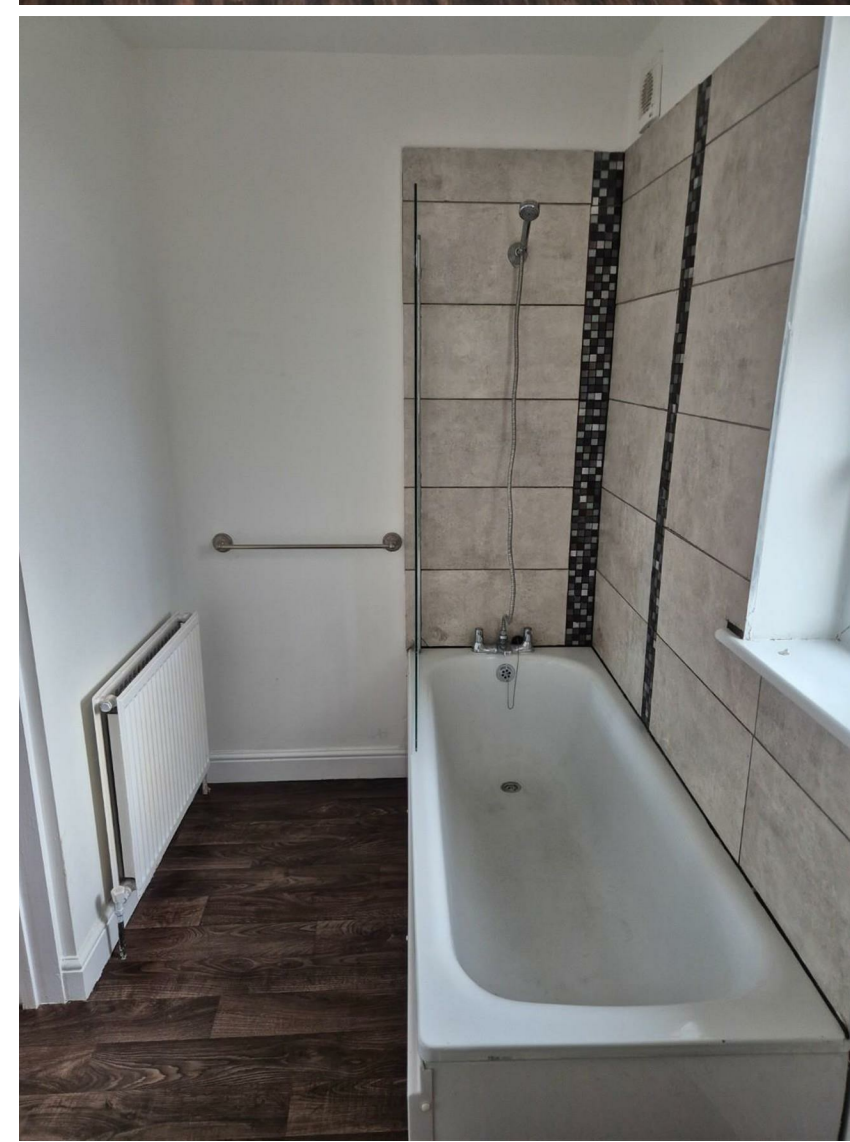
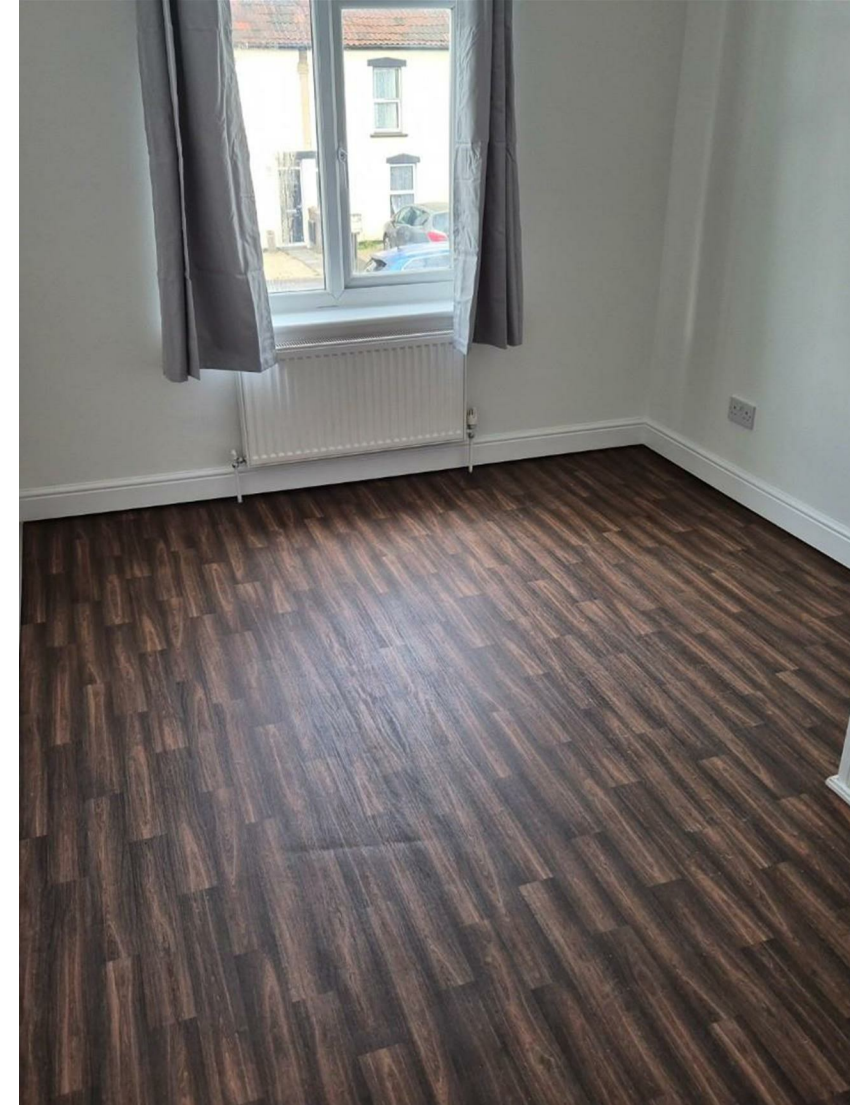


THE
PROPERTY
OUTLET

Bristol's home for Stylish Sales & Lettings



SOUTHMEAD ROAD
WESTBURY-ON-TRYM





SOUTHMEAD ROAD

WESTBURY-ON-TRYM, BS10 5LW -
£1,250 PER MONTH



2 Bedroom(s)



1 Bathroom(s)



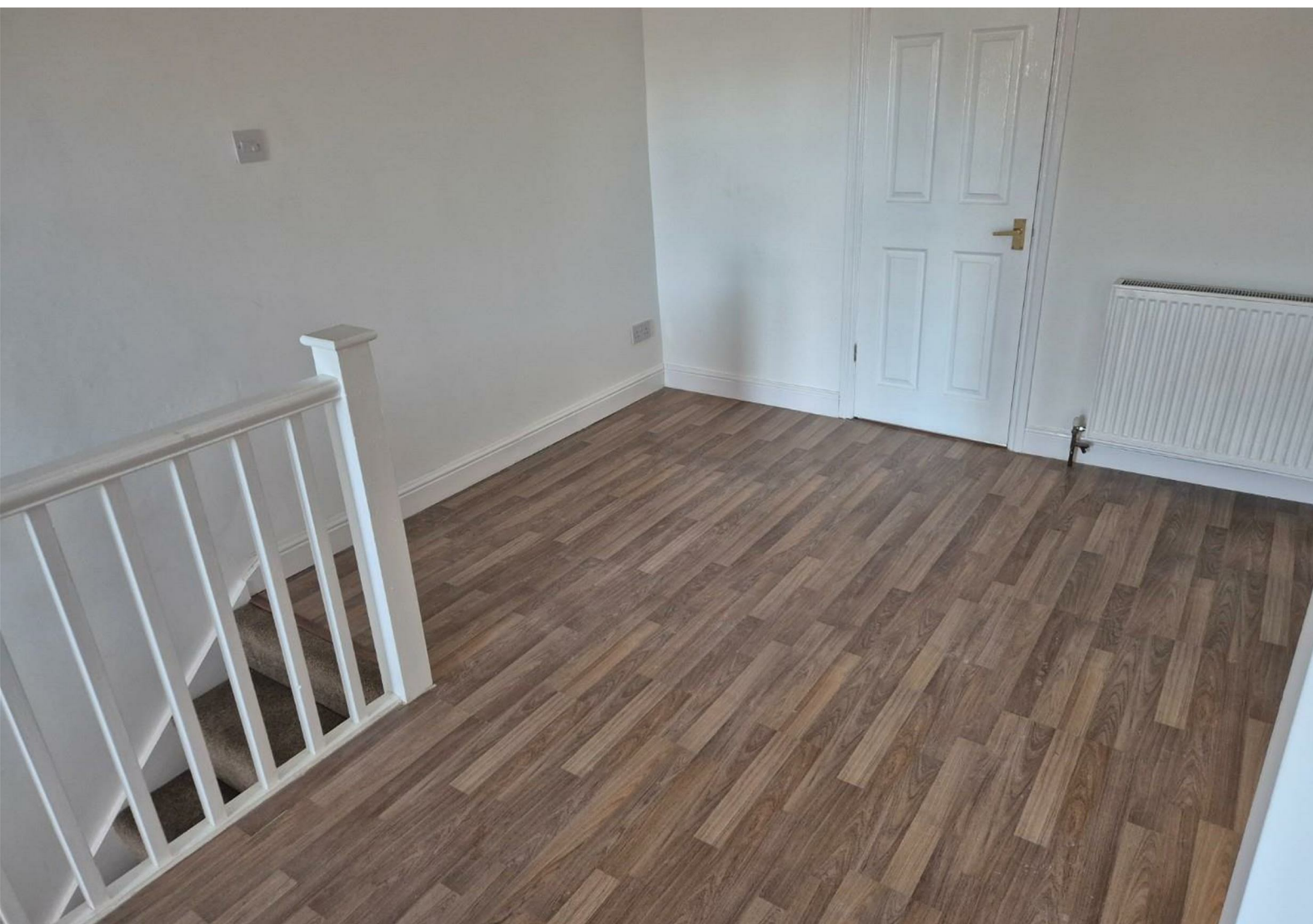
sq ft

* AVAILABLE 01.05.2025 *

WELL PRESENTED TWO BEDROOM FLAT! The Property Outlet are keen to bring to the rental market this recently refurbished & re decorated first floor flat. The accommodation comprises ENTRANCE HALL, LARGE LIVING/DINING ROOM, KITCHEN, TWO DOUBLE BEDROOMS & a REFITTED BATH/SHOWER ROOM & WC. Benefits include GAS CENTRAL HEATING, DOUBLE GLAZING. This UNFURNISHED flat includes WHITE GOODS - FRIDGE/FREEZER & an ELECTRIC HOB/ELECTRIC OVEN. Located on SOUTHMEAD ROAD making it an ideal position for local employees at Southmead Hospital along with LOCAL TRANSPORT LINKS & AMENITIES nearby. Sorry no pets. WATER & SEWAGE BILLS INCLUDED.

Holding Deposit £300.00

COUNCIL TAX BAND - A



- Two Bedrooms
- Unfurnished
- Gas Central Heating
- Double Glazing
- Electric Hob/Electric Oven
- Fridge/Freezer
- Suit a Couple
- Newly Refurbished
- Well Presented
- Close To Southmead Hospital

PROPERTY SPECIALIST

Mr Carl Mortimore
c.mortimore@thepropertyoutlet.con
01179354565
Branch manager

