

**14 Leed Street Sandown, PO36 8JG**

**Offers in excess of  
£425,000**



This spacious Victorian 7 bedroom property is located in a sought-after location in the popular seaside town Sandown, within walking distance to Sandown's beautiful beach, shops and local restaurants. The property was previously used as a successful B & B however alternatively can be used as a spacious home. The property consists of three floors, the ground floor consisting of a dining room, living room, conservatory, kitchen, bedroom and shower room. The first floor consists of three double bedrooms benefitting from en-suite shower rooms. The second floor consists of three double bedrooms benefitting from en-suite shower rooms. Outside offers terraced garden with a garden shed. Other benefits of the property includes ample parking, gas central heating and double glazing throughout. This is the perfect property for investors with potential to develop the property or large families!!

**GREAT INVESTMENT OPPORTUNITY!!**

**SEMI-DETACHED**

**CLOSE TO LOCAL SHOPS, BEACH &  
RESTAURANTS**

**7 BEDROOMS WITH EN-SUITE**

**AMPLE PARKING**

**CONSERVATORY**



# ROOMS

## Entrance Hall

## Dining room

Carpet flooring. Feature fireplace. Cupboards. Double glazed bay windows to front aspect.

## Living Room

Wood effect laminate flooring. Double doors to conservatory. Radiator.

## Conservatory

## Kitchen

Fitted-kitchen with matching wall base units and dual gas hob and oven. Sink drainer. Double glazed window to side aspect.

## Bedroom 1

Wood effect LVT Flooring. Double glazed window to side aspect. Radiator. Shower En-suite.

## First Floor Landing

## Bedroom 2

Carpet flooring. Double glazed window to side aspect. Radiator. Shower En-suite.

## Bedroom 3

Carpet flooring. Double glazed window to rear aspect. En-suite shower room. Radiator.

14 leed st

TOTAL AREA: 174.13 m² • LIVING AREA: 174.13 m² • FLOORS: 3 • ROOMS: 26



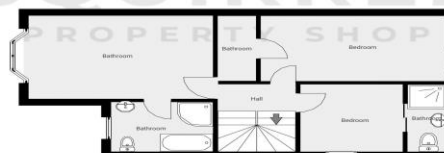
▼ Ground Floor

TOTAL AREA: 94.93 m² • LIVING AREA: 94.93 m² • ROOMS: 10



▼ 1st Floor

TOTAL AREA: 46.34 m² • LIVING AREA: 46.34 m² • ROOMS: 7



THIS FLOOR PLAN IS PROVIDED WITHOUT WARRANTY OF ANY KIND. SENSOPRA DISCLAIMS ANY WARRANTY INCLUDING, WITHOUT LIMITATION, SATISFACTORY QUALITY OR ACCURACY OF DIMENSIONS.

0 1 2 3 4m  
1:98  
Page 1/2

