

Caesars Road Newport, PO30 5EA

£295,000



This 3 bedroom end of terraced house is located in the popular town of Newport, within walking distance to local schools, shops and bus routes. The property consists of a well-presented living room, open plan kitchen/diner, master bedroom with en-suite, double bedroom, a single bedroom and modern family bathroom. Outside offers a garden and patio space. Other benefits of the property includes a driveway for multiple vehicles, garage, gas central heating & double glazing. This is a must see!!

3 BEDROOMS

OFF-ROAD PARKING & GARAGE

GOOD-SIZED GARDEN

END OF TERRACE HOUSE

CLOSE TO NEWPORT TOWN CENTRE

GAS CENTRAL HEATING & DOUBLE GLAZING

ROOMS

Living room 10' 10" x 14' 1" (3.3m x 4.3m)

LVT flooring. Double glazed window to front aspect. Radiator.

Dining room 12' 2" x 14' 1" (3.7m x 4.3m)

LVT Flooring. Double Glazed window to side aspect. Radiator.

Kitchen 7' 3" x 14' 1" (2.2m x 4.3m)

Tiled flooring. Modern-fitted kitchen with Electric dual range oven. Sink drainer. Room for white goods. Double glazed window to side and rear aspect. Double glazed french doors leading on to the garden.

Landing

Master bedroom 10' 10" x 11' 2" (3.3m x 3.4m)

LVT Flooring. Double glazed window to front aspect. Radiator.

En-suite 4' 3" x 2' 4" (1.3m x 0.7m)

Tiled flooring. Walk-in shower, sink basin & WC. Heated towel rail.

Bedroom 2 7' 0" x 11' 3" (2.13m x 3.43m)

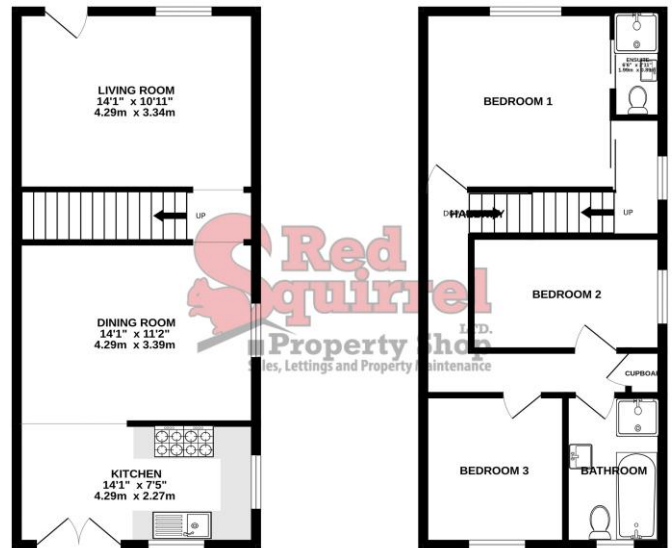
LVT Flooring. Double glazed window to side aspect. Radiator.

Family Bathroom 8' 6" x 5' 7" (2.6m x 1.7m)

Tiled flooring. Walk-in shower. Fitted-bath. Sink basin & WC. Double glazed

GROUND FLOOR
461 sq ft. (42.8 sq.m.) approx.

1ST FLOOR
461 sq ft. (42.8 sq.m.) approx.



TOTAL FLOOR AREA: 921 sq ft. (85.6 sq.m.) approx.
While every attempt has been made to ensure the accuracy of the floor plan, measurements of doors, windows, corners and other items are approximate and no responsibility is taken for any error, omission or misstatement. This plan is for illustrative purposes only and should be used in conjunction with the prospectus. The actual, square and cubic meters have not been tested and no guarantee is given as to their accuracy or efficiency for the given.
Made with Metronix i2024

Bedroom 3 8' 6" x 9' 2" (2.6m x 2.80m)
LVT Flooring. Double glazed window to rear aspect. Radiator.

