



Saltram Crescent, W9

Leasehold - £425,000

For Sale is this naturally bright First floor, two-bedroom flat, offering 575 sq ft of living space in a popular residential location.

The property comprises a spacious front reception room/dining room with wooden flooring and a feature fireplace, a separate kitchen, family bathroom and two bedrooms. The second bedroom is ideal as a home office or guest room. The kitchen and bathroom offer an excellent opportunity for modernisation.

Saltram Crescent is ideally positioned for the vibrant lifestyle of Queen's Park, with its array of independent cafés, restaurants, and boutique shops. Excellent transport links nearby include Queen's Park (Bakerloo & Lioness zone 2) and Kilburn Park (Bakerloo zone 2).

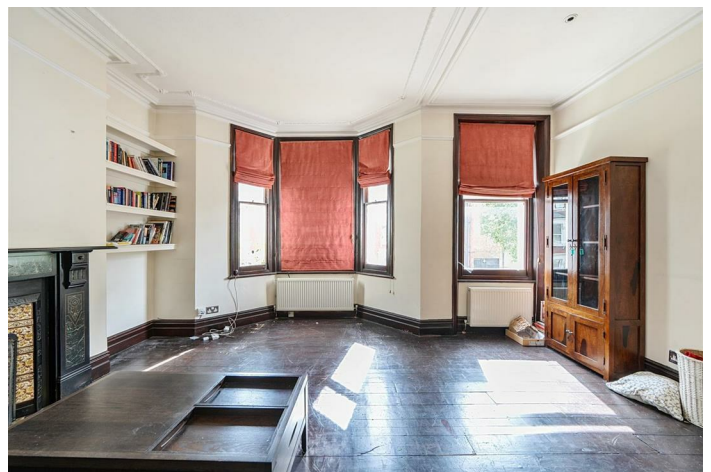
NOTE: Please note we do not have images of the kitchen or bathroom.

- Bright and spacious 2 bedroom, 1st floor flat
- Opportunity to modernise kitchen and bathroom
- Excellent transport links
- COUNCIL: Westminster (C)

020 7328 2828

enquiries@cameronsstiff.co.uk

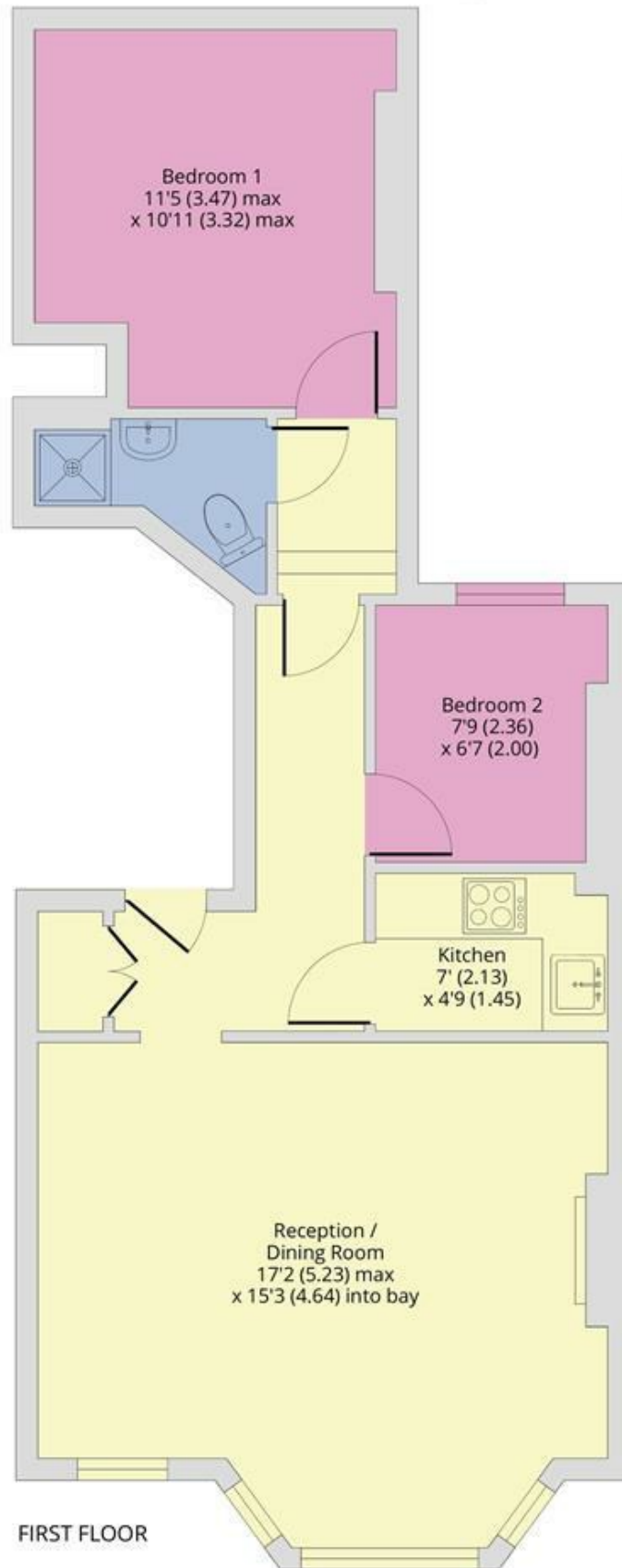
cameronsstiff.co.uk



Saltram Crescent, London, W9

Approximate Area = 575 sq ft / 53.4 sq m

For identification only - Not to scale



EPC: D

Ref: 19380029



Floor plan produced in accordance with RICS Property Measurement 2nd Edition, Incorporating International Property Measurement Standards (IPMS2 Residential). © n'cheom 2025. Produced for Camerons Stiff & Co. REF: 1323988

