



Brondesbury Road, NW6

Freehold - £1,380,000

For Sale is this stylish four bedroom Coach House arranged over three Floors, offering 1379 sq ft of beautiful accommodation, situated on a pretty tree lined street in the heart of Queens Park.

This bright and airy property has been tastefully decorated throughout and the Ground Floor comprises a guest W/C, cloakroom and a large open plan modern kitchen/reception with skylight, hard wooden flooring and double doors leading to the private south-facing garden. The First Floor offers the main bedroom with fitted wardrobes and an en-suite bathroom, another bedroom completes this floor. There are two further bedrooms on the Second Floor which are serviced by a three piece bathroom. This property also offers off-street parking.

Located on one of the most sought after streets in Queen's Park, the property is conveniently situated for easy access to many local amenities in the area including upmarket delis, restaurants and Gastro pubs. Excellent transport links include Queens Park (Bakerloo-Zone 2) station as well as local bus routes.

- Beautiful 4 bedroom Coach House over 3 floors
- Offering 1379 sq ft of stylish accommodation
- Open plan kitchen/reception with wood floors
- Private south-facing garden
- Transport: Queens Park (Bakerloo-Zone 2)
- COUNCIL: Brent (E)

020 7328 2828

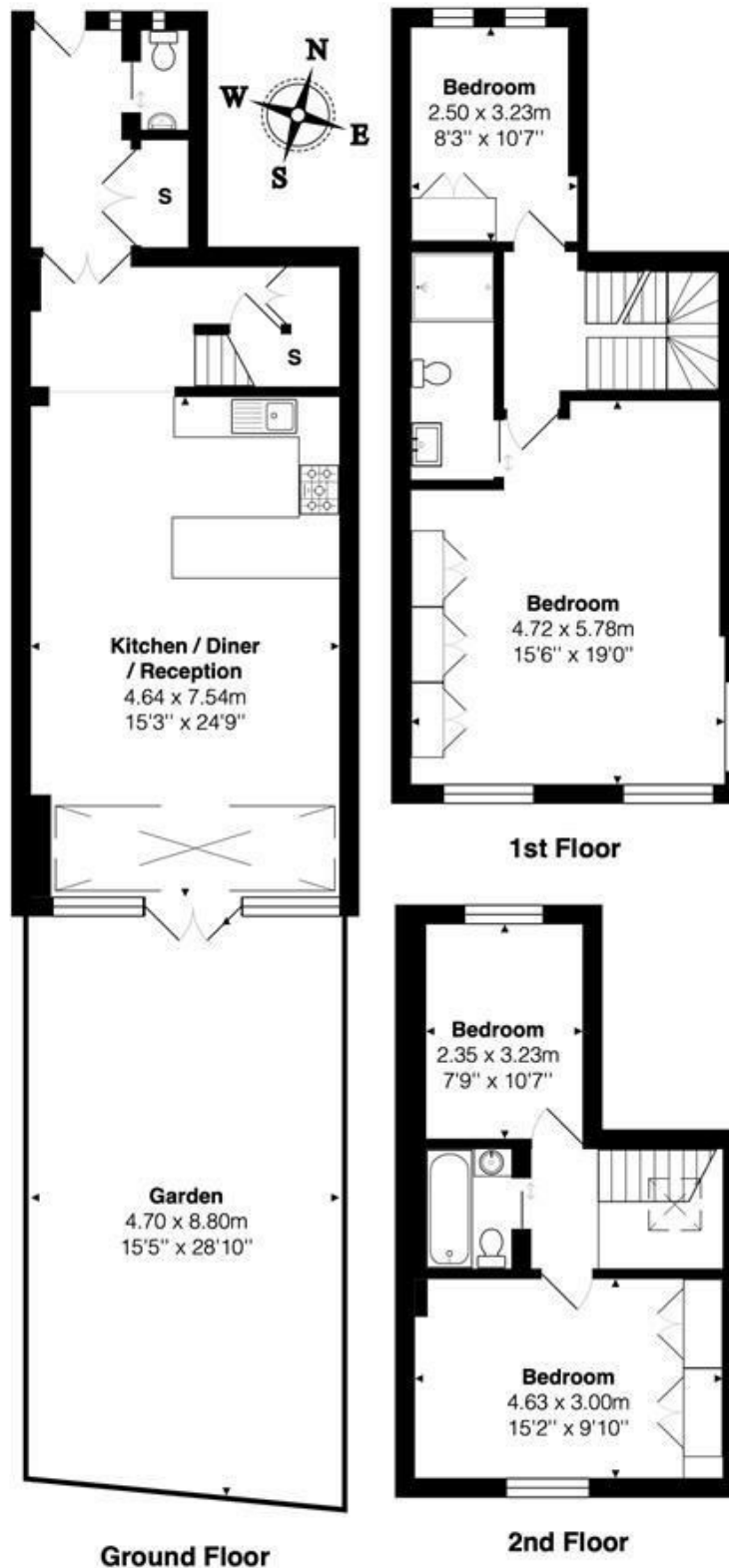
enquiries@cameronsstiff.co.uk

cameronsstiff.co.uk









Total Area: 128.1 m² ... 1379 ft² (excluding garden)

All measurements are approximate and for display purposes only

EPC: D

Ref: 18708745

