



Galton Street, W10

Freehold - £1,150,000

For Sale is this three bedroom mid-terraced home. Conveniently located near the vibrant Queen's Park.

The Ground Floor boasts a stylish reception and dining area, a modern kitchen with integrated appliances, a central island, skylights, and double doors opening onto a private 18 ft patio and garden. On the First Floor, you'll find two spacious bedrooms and a four-piece family bathroom with contemporary finishes. The Second Floor is dedicated to the principal bedroom, complete with Velux windows and generous eaves storage.

Galton Street is a quiet residential street. Close to the popular Queen's Park and Kensington Memorial Park. A short distance from Portobello Road, known for their vibrant markets, boutique shops, and trendy cafés. Nearby Chamberlayne Road offers a selection of gastropubs, bakeries, and independent stores. Transport links include Kensal Green (Bakerloo & Overground - Zone).

- 3 bedroom mid-terraced home
- Velux windows & eaves storage
- 18 ft patio and garden
- Westminster (E)

020 7328 2828

enquiries@cameronsstiff.co.uk

cameronsstiff.co.uk







Denotes restricted
head height

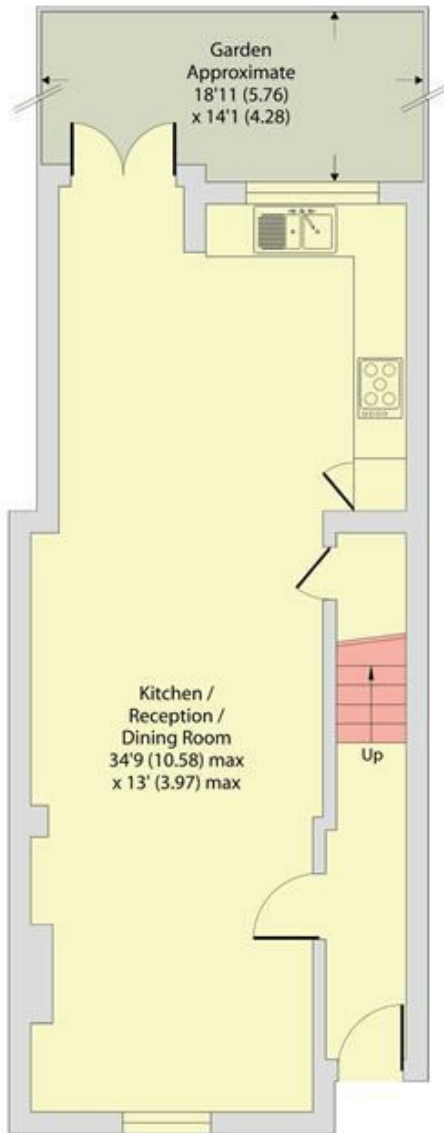
Galton Street, London, W10

Approximate Area = 1002 sq ft / 93.1 sq m

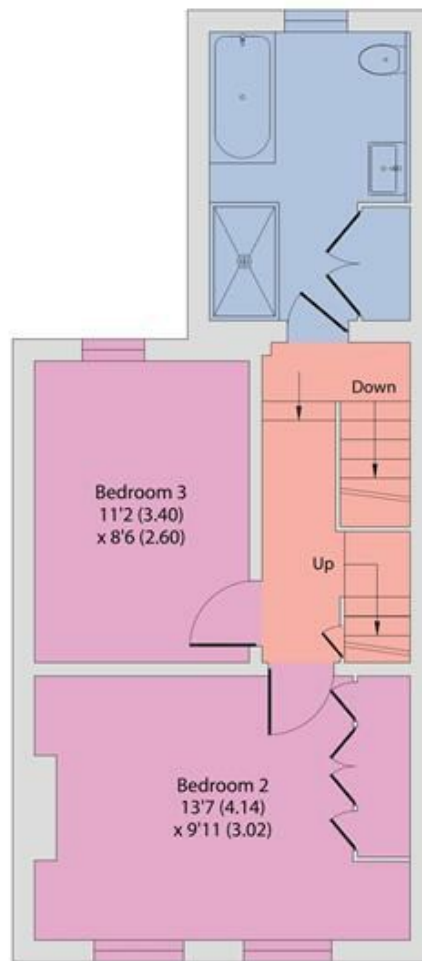
Limited Use Area(s) = 111 sq ft / 10.3 sq m

Total = 1113 sq ft / 103.4 sq m

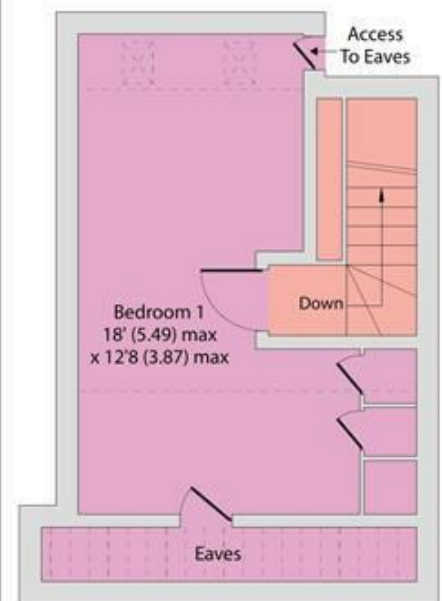
For identification only - Not to scale



GROUND FLOOR



FIRST FLOOR



SECOND FLOOR

EPC: C

Ref: 19311211



Floor plan produced in accordance with RICS Property Measurement 2nd Edition,
Incorporating International Property Measurement Standards (IPMS2 Residential). © nichecom 2025.
Produced for Camerons Stiff & Co. REF: 1276270

