



Plympton Road, NW6

Leasehold - £525,000

For Sale is this beautifully presented one-bedroom turnkey top-floor conversion, offering 639 sq ft of thoughtfully designed living space. Nestled on a sought-after, quiet road in the heart of the Brondesbury Conservation Area, this charming property combines style, comfort, and character.

The bright reception/dining area features a striking fireplace and elegant wood flooring, while the spacious bedroom includes built-in wardrobes for ample storage. The contemporary kitchen boasts sleek wooden worktops, and the stylish three-piece tiled shower room adds a modern touch. A standout feature is the south-facing roof terrace — perfect for relaxing and soaking up the sun.

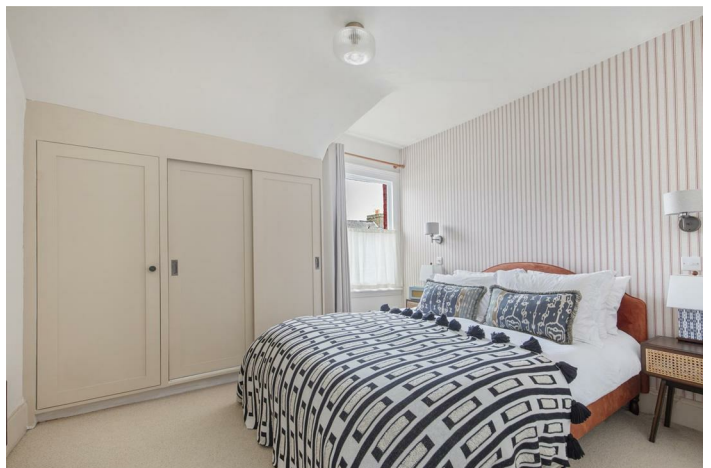
Plympton Road is a quiet, tree-lined residential street within a Victorian residential hamlet just East of Queen's Park. The amenities of Queen's Park and Kilburn are within walking distance. Local transport links include Kilburn (Jubilee - Zone 2) and Brondesbury (Overground - Zone 2).

- 1 bedroom turnkey Top-Floor conversion
- Offering 639 sq ft
- South-facing roof terrace
- Council: Brent (C)

020 7328 2828

enquiries@cameronsstiff.co.uk

cameronsstiff.co.uk







PLYMPTON ROAD

London - NW 6

Approximate Gross Internal Floor Area
639 sq. ft / 59.39 sq. m



EPC: C

Ref: 19269754

Floorplan is for illustrative purposes only and is not to scale. Every attempt has been made to ensure the accuracy of the floor plan shown, however all measurements, fixtures, fittings and data shown are an approximate interpretation for illustrative purposes only. Liability for errors, omissions or mis-statement through negligence or otherwise is hereby excluded.

