



## Hazelmere Road, NW6

### Leasehold - £499,950

For Sale is this one bedroom flat situated on the First Floor of a beautifully maintained Victorian building, located on a quiet, tree-lined residential road in the heart of Queen's Park.

Offering 488 sq ft, the accommodation comprises of a 15 ft reception room with original wooden floors, a Victorian frieze, and a large sash window that floods the space with natural light. The kitchen offers a full range of base units, ample work surfaces, and a large sash window. To the rear, a generously sized bedroom includes fitted wardrobes and picturesque garden views, a roll-top bath adds elegance to the bathroom. Further benefits include high ceilings and a South west-facing balcony.

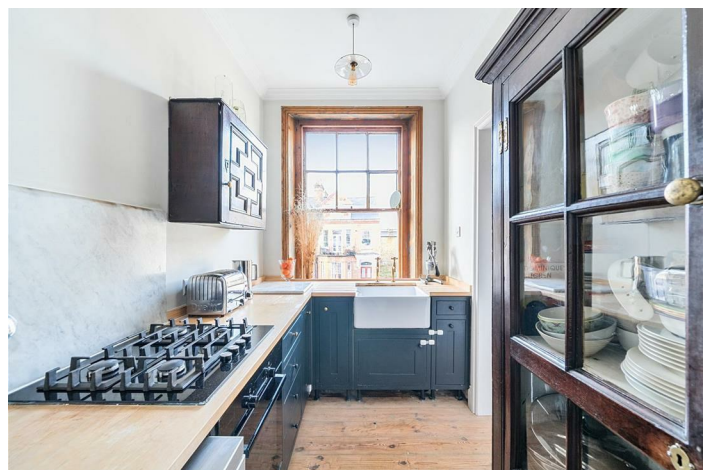
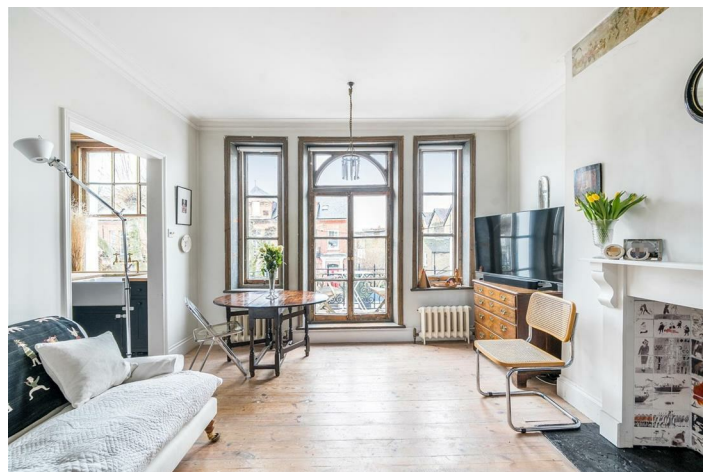
Located just moments from the vibrant Queen's Park, this area offers a variety of cafes, delis, bars, restaurants, and the popular Queen's Park Farmers Market. Excellent transport links: Queen's Park (Bakerloo & Overground - Zone 2), and Kilburn (Jubilee - Zone 2).

- 1 bedroom flat - offering 488 sq ft
- South-west facing balcony
- Viewing is highly recommended
- Council: Brent (C)

020 7328 2828

[enquiries@cameronsstiff.co.uk](mailto:enquiries@cameronsstiff.co.uk)

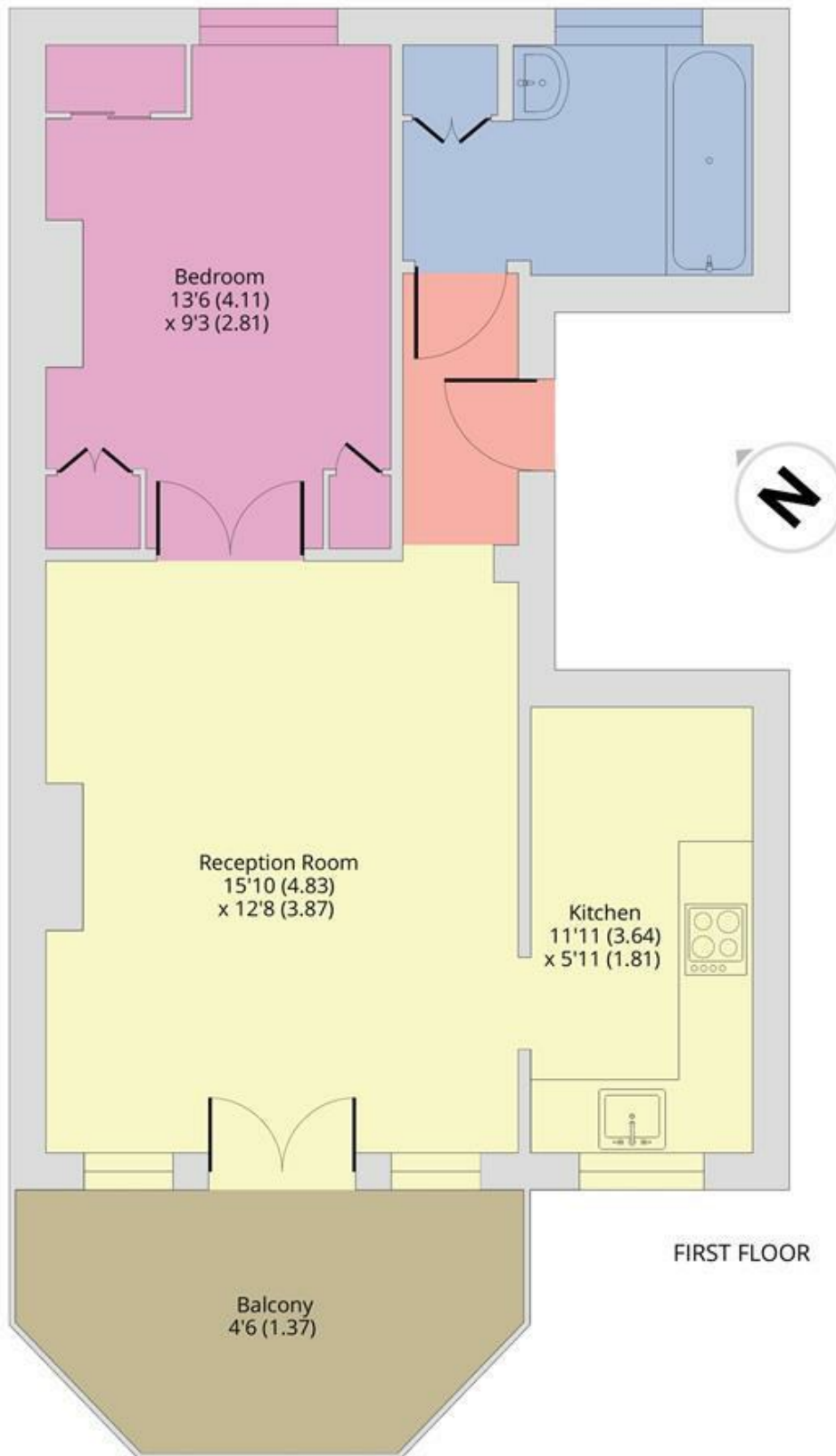
[cameronsstiff.co.uk](http://cameronsstiff.co.uk)



Hazelmere Road, London, NW6

Approximate Area = 488 sq ft / 45.3 sq m

For identification only - Not to scale



EPC: C

Ref: 18874498



Floor plan produced in accordance with RICS Property Measurement 2nd Edition, Incorporating International Property Measurement Standards (IPMS2 Residential). © nichecom 2025. Produced for Camerons Stiff & Co. REF: 1236264

