



## Dyne Road, NW6

### Leasehold - £399,995

CHAIN FREE - For Sale solely through Camerons Stiff is this two bedroom First Floor flat, with a balcony, offering 539 sq ft of accommodation situated on Dyne Road.

The property comprises a 17 ft open plan fitted kitchen/reception room with wood style flooring, leading onto the private balcony with views over the communal gardens. There is also a large main bedroom with a deep dressing room and a second bedroom with fitted wardrobes which are serviced by a family bathroom.

Dyne Road is located in a conveniently close to Kilburn (Jubilee - Zone 2) and Brondesbury Park (Overground). The walking culture includes The Kiln Theatre and Cinema and the Queen's Park design district. Viewing is highly recommended.

- CHAIN FREE
- Charming 2 bedroom First Floor flat offering 539 sq ft
- Private balcony & access to communal gardens
- COUNCIL: Brent (B)

020 7328 2828

[enquiries@cameronsstiff.co.uk](mailto:enquiries@cameronsstiff.co.uk)

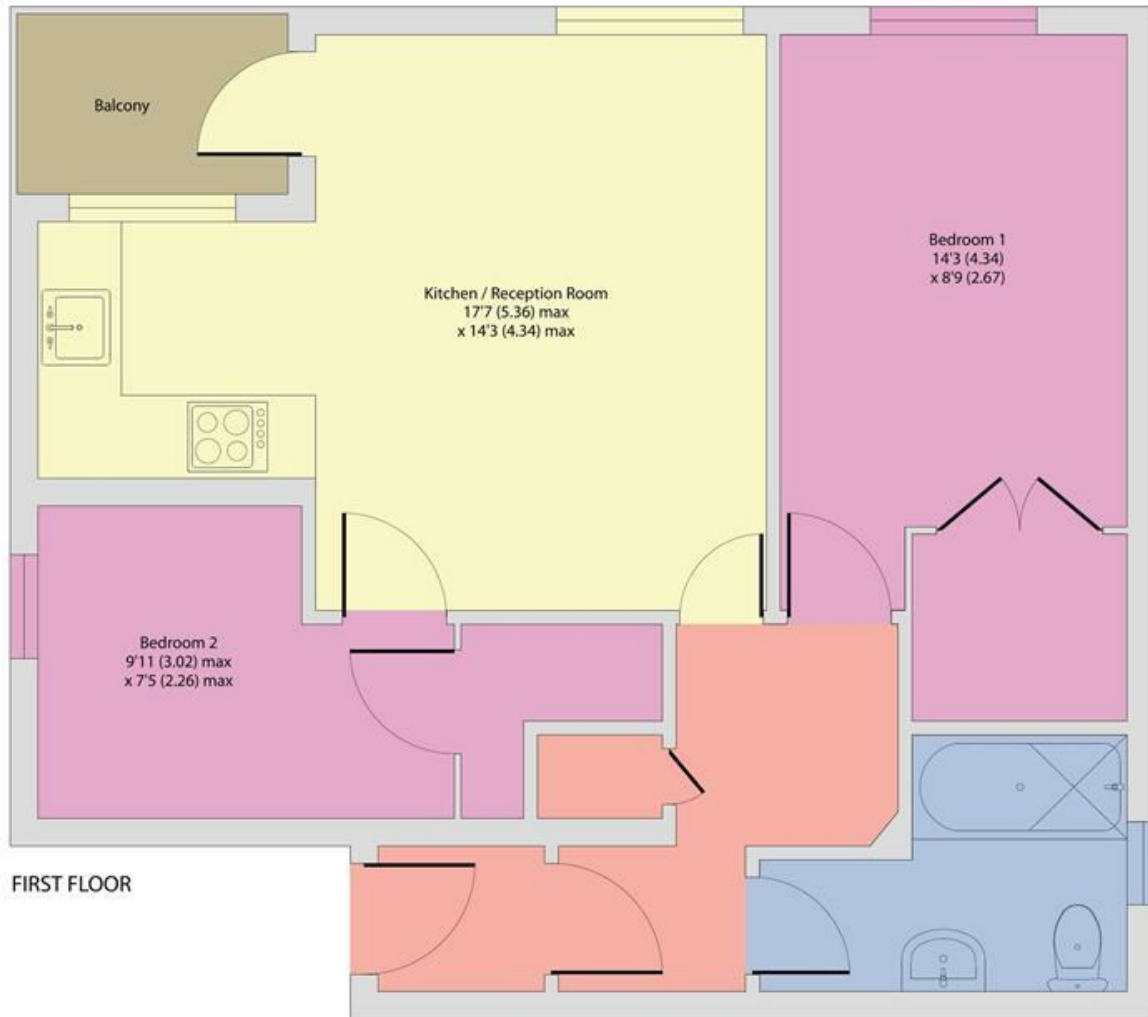
[cameronsstiff.co.uk](http://cameronsstiff.co.uk)



## William Dromey Court, Dyne Road, London, NW6

Approximate Area = 539 sq ft / 50 sq m

For identification only - Not to scale



Floor plan produced in accordance with RICS Property Measurement Standards incorporating International Property Measurement Standards (IPMS2 Residential). © nichecom 2024. Produced for Camerons Stiff & Co. REF: 1110252

**EPC: C**  
Ref: 18868905

