



Kilburn Lane, W9

Freehold - £485,000

An enviable, stylish two bedroom apartment available For Sale within this unique development in Queen's Park. Meticulous attention to detail is evident as you view the property with all the high end fixtures and fittings clearly evident.

This particular property has two good sized bedrooms with fitted floor to ceiling wardrobes, carpet and downlights. The open plan kitchen/reception room has integrated appliances, good quality laminated flooring, downlighters and a large window. Attention to detail throughout this superb apartment is visible throughout.

Situated moments away from the independent cafés and bistros on Salusbury Road, Lonsdale Road and Chamberlayne Road in Kensal Rise along with easy access into Central London, Canary Wharf and The City.

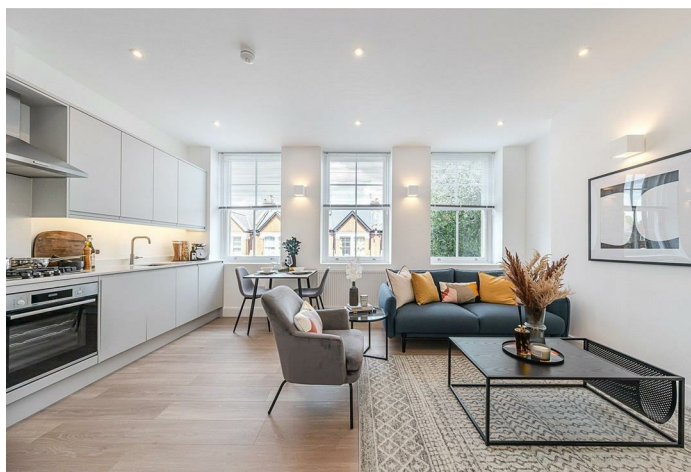
Contact us to register your interest at enquiries@cameronsstiff.co.uk quoting KILN.

- Commanding position close to Queen's Park
- Generous sized two bedroom apartment
- Open plan kitchen/reception area
- Modern three piece bathroom suite
- Other apartments available within this development
- COUNCIL: Westminster (tbc)
- Register your interest at enquiries@cameronsstiff.co.uk
- Viewing recommended

020 7328 2828

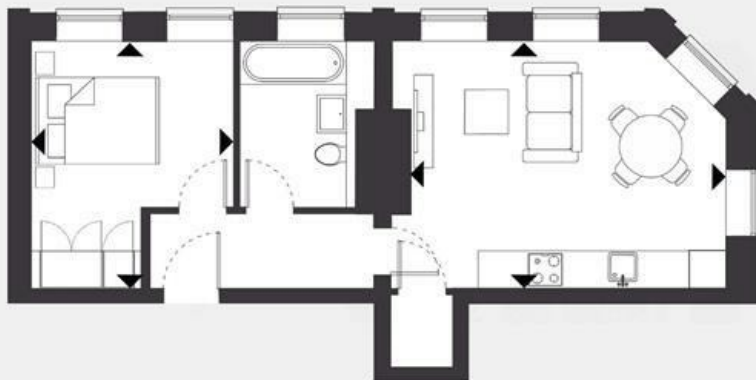
enquiries@cameronsstiff.co.uk

cameronsstiff.co.uk





THE KILN



Apartment 9

1 BED
TOTAL AREA 42 m² / 452 ft²

LIVING & KITCHEN
4.82 x 3.86 m
15'9" x 12'7"

BEDROOM 1
3.39 x 3.25 m
11'1" x 10'7"



FIRST FLOOR

EPC: C
Ref: 18751444

