



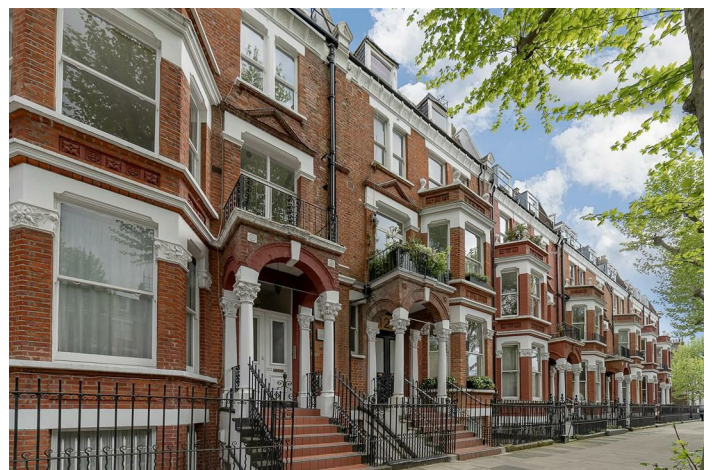
Sutherland Avenue, W9

Leasehold - £1,550,000

FOR SALE is this stunning three bedroom Lower Ground Floor apartment set within a converted red brick Period building in the heart of Little Venice. The property is being offered in excellent decorative condition with access to the well-maintained communal gardens.

Offering 1,195 sq ft of accommodation, the flat comprises an open plan reception/dining room with bifold doors opening out to a patio and communal garden, a fully fitted kitchen, three double bedrooms, two of which have en-suites and a family bathroom. Further benefits include period features, high ceilings, a feature fireplace and wood flooring throughout.

Sutherland Avenue is situated within close distance of all the local amenities including restaurants, cafes and boutique shops on Clifton Road as well as the picturesque Regent's Canal. Transport links include Warwick Avenue (Bakerloo - Zone 2).



- Stunning 3 bedroom apartment
- Private access to communal gardens
- Offering 1,195 sq ft of beautiful accommodation
- High ceilings, decorative cornicing & feature fireplace
- Viewing is highly recommended
- COUNCIL: Westminster City (G)

020 7328 2828

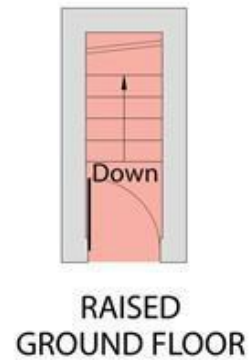
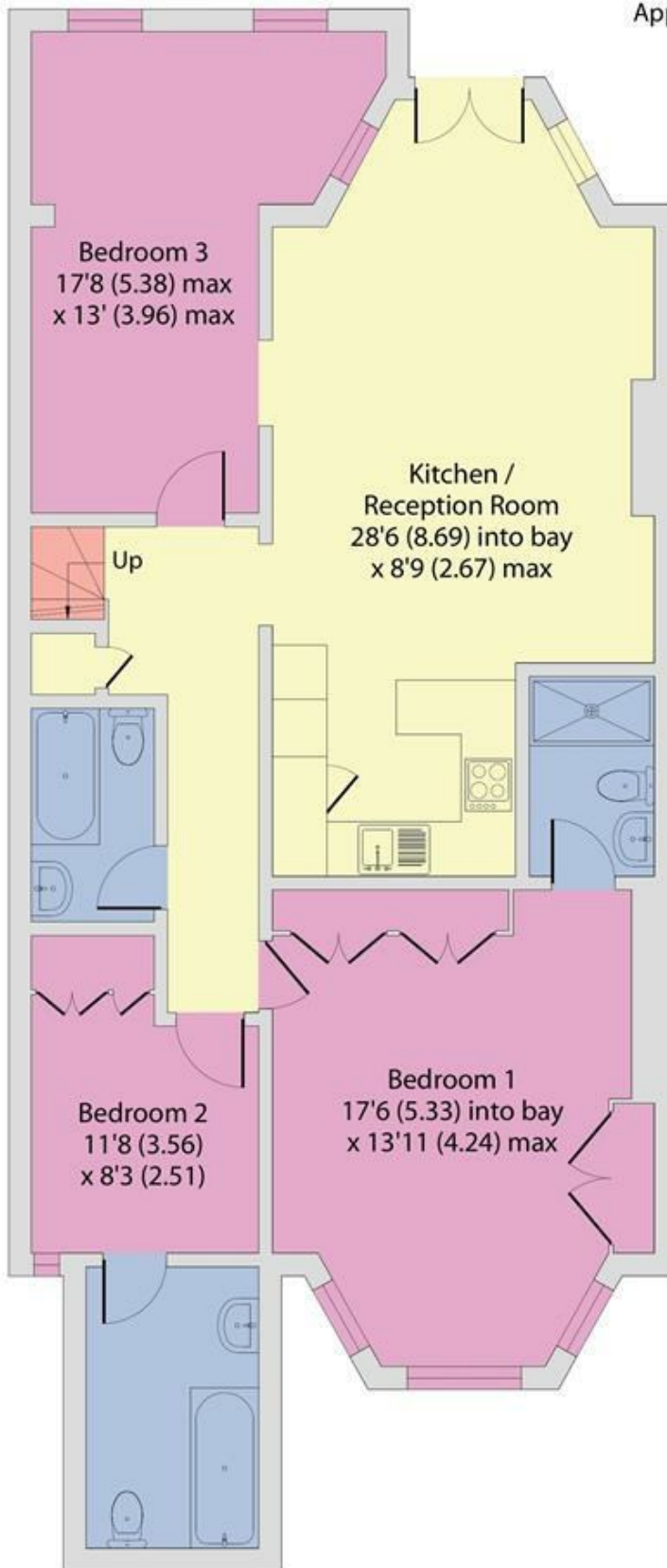
enquiries@cameronsstiff.co.uk

cameronsstiff.co.uk

Sutherland Avenue, London, W9

Approximate Area = 1195 sq ft / 111.01 sq m

For identification only - Not to scale



EPC: D

LOWER GROUND FLOOR

Ref: 19003743



This floor plan was constructed using measurements provided to ©ncheom 2024 by a third party. Produced for Camerons Stiff & Co REF: 1160265

