



Shoot-Up Hill, NW2

Leasehold - £599,950

FOR SALE is this well maintained Third Floor, three bedroom apartment set in a Art Deco period building. The property provides a spacious living area for a family offering 873 sq ft.

The stylish apartment has been tastefully decorated and comprises of a spacious reception and wood flooring, a separate kitchen with integrated appliances, three generous bedrooms and two contemporary bathrooms. Further features include double glazing.

Hillcrest Court is ideally situated for commuters, Kilburn (Jubilee - Zone 2) and excellent bus routes are a short walk. The home is accessible to local eateries and pubs.

- Art Deco three bedroom apartment - 873 sq ft
- Light and generous sized accommodation
- Transport links: Kilburn Jubilee (Zone 2)
- COUNCIL: Camden (D)
- Viewing is recommended

020 7328 2828

enquiries@cameronsstiff.co.uk

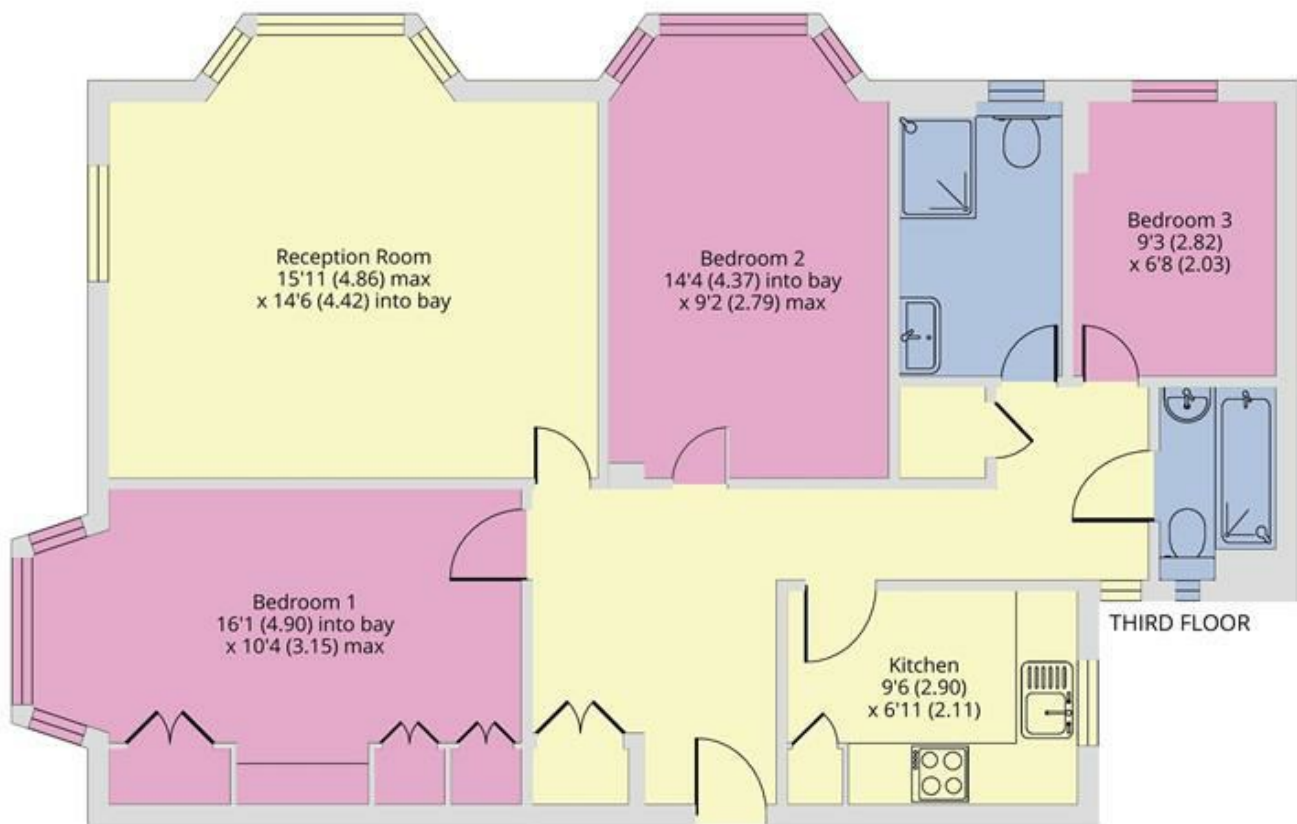
cameronsstiff.co.uk



Hillcrest Court, Shoot Up Hill, London, NW2

Approximate Area = 873 sq ft / 81.1 sq m

For identification only - Not to scale



EPC: C

Ref: 18831290



Floor plan produced in accordance with RICS Property Measurement Standards incorporating International Property Measurement Standards (IPMS2 Residential). © nichecom 2024. Produced for Camerons Stiff & Co. REF: 1093203

