



£1,200,000 Freehold



3



1



2



1235.00  
sq ft



'The KILN' is a gorgeous collection of new apartments and townhouses, situated in a commanding position in the heart of Queen's Park.

This boutique scheme comprises 17 one-bedroom and 2 two-bedroom apartments, in addition to two townhouses. Each dwelling has been meticulously considered, and features exceptional fixtures and fittings.

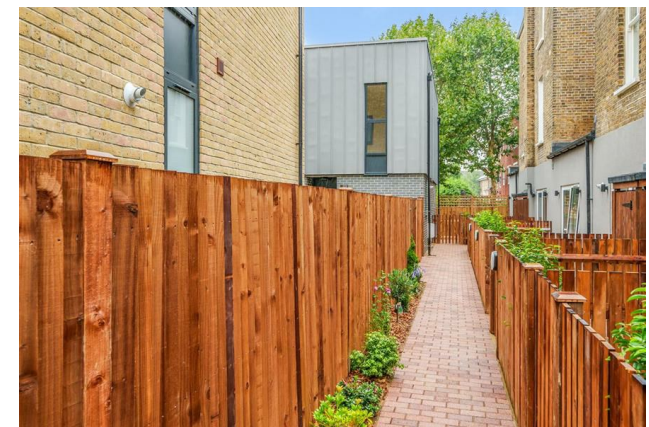
Prices range from £450,000 for a 1 bedroom apartment, £550,000 for a 2 bedroom apartment and £1,300,000- £1,500,000 for a townhouse.

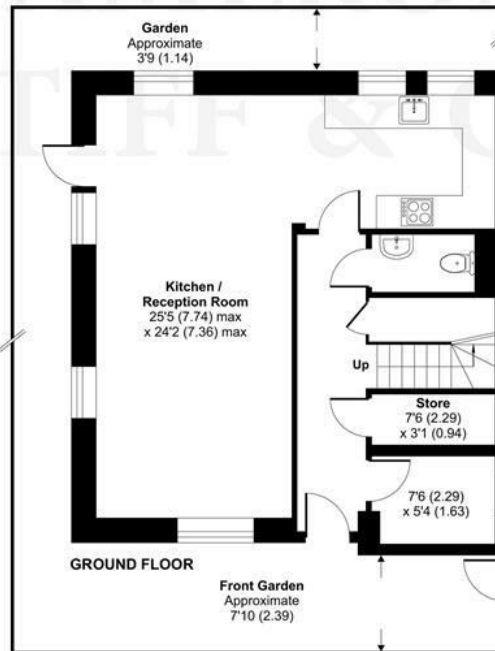
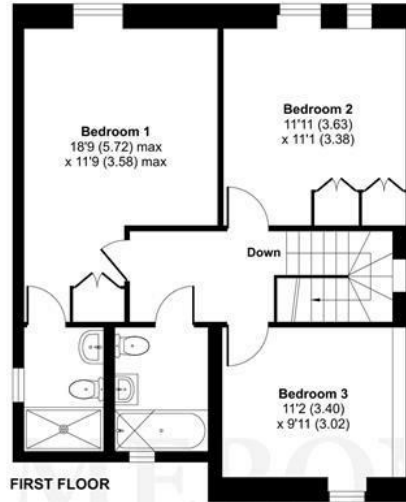
The development is moments away from the independent cafés and bistros on Salusbury Road, Lonsdale Road and Chamberlayne Road in Kensal Rise.

Contact us to register your interest via [enquiries@cameronsstiff.co.uk](mailto:enquiries@cameronsstiff.co.uk) quoting KILN









Floor plan produced in accordance with RICS Property Measurement Standards incorporating International Property Measurement Standards (IPMS2 Residential). © nitchecom 2023. Produced for Camerons Stiff & Co. REF: 1019847

Energy Efficiency Rating		Current	Potential
Very energy efficient - lower running costs			
32-35 kWh/m <sup>2</sup> /yr	<b>A</b>		
21-31 kWh/m <sup>2</sup> /yr	<b>B</b>		
15-20 kWh/m <sup>2</sup> /yr	<b>C</b>		
11-15 kWh/m <sup>2</sup> /yr	<b>D</b>		
7-10 kWh/m <sup>2</sup> /yr	<b>E</b>		
4-6 kWh/m <sup>2</sup> /yr	<b>F</b>		
1-3 kWh/m <sup>2</sup> /yr	<b>G</b>		
Not energy efficient - higher running costs			
<b>England &amp; Wales</b>		EU Directive 2002/91/EC	

## Kilburn Lane, W9

