



High Street

Hadlow TN11 0EE

Guide Price £220,000



COUNTRY HOMES

Hadlow TN11 0EE

A TOP FLOOR APARTMENT CONVERTED FROM THIS ATTRACTIVE GRADE TWO LISTED BUILDING.

OFFERED CHAIN FREE.

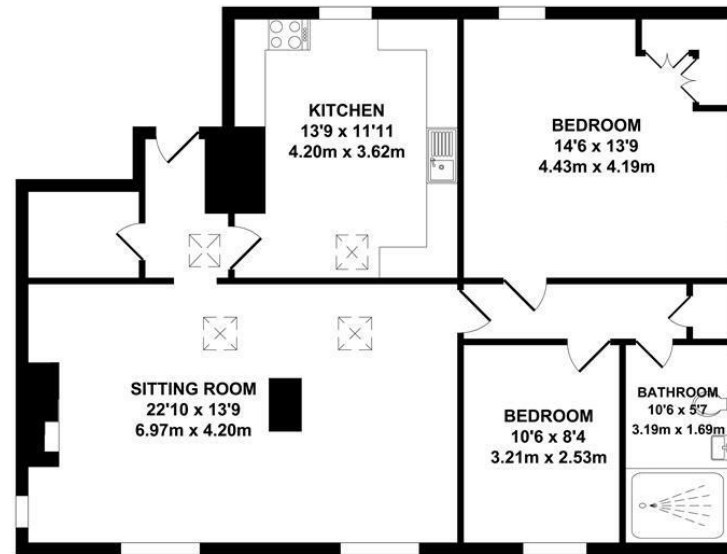
Converted from this attractive detached period building is this 2nd floor apartment. The property offers spacious accommodation including two good-size bedrooms, fitted kitchen, shower room and double reception with feature fire place. Property is offered with no onward chain,

Situated in the popular village between the busy market town of Tonbridge (Approximately 4 miles distance) and the county town of Maidstone (10 miles), with regular bus services to both. The historic parish church of St Mary's dates back over hundreds of years and the skyline is dominated by the pseudo-Gothic Hadlow Tower.

The community is well-served by local shops, pubs and restaurants, as well as a library and health facilities including a medical centre, dentist and pharmacy. If Kent is the Garden of England then Hadlow must surely be a favourite corner to escape to, surrounded by rural countryside, has many country walks and of course, home to the Hadlow College of Agriculture and Horticulture.

- Village location
- Converted apartment
- Top floor
- Two bedrooms
- Large reception room
- Fitted kitchen
- Large shower room
- Parking
- Period features
- Viewing recommended





TOTAL APPROX. FLOOR AREA 954 SQ.FT. (88.67 SQ.M.)

Whilst every attempt has been made to ensure the accuracy of the floor plan contained here, measurements of doors, windows, rooms and any other items are approximate and no responsibility is taken for any error, omission or mis-statement. This plan is for illustrative purposes only and should be used as such by any prospective purchaser. The services, systems and appliances shown have not been tested and no guarantee as to their operability or efficiency can be given.

Zome Media ©2023

75-77 High Street, West Malling, Kent ME19 6NA

01732 87 11 11

westmallings@khp.me

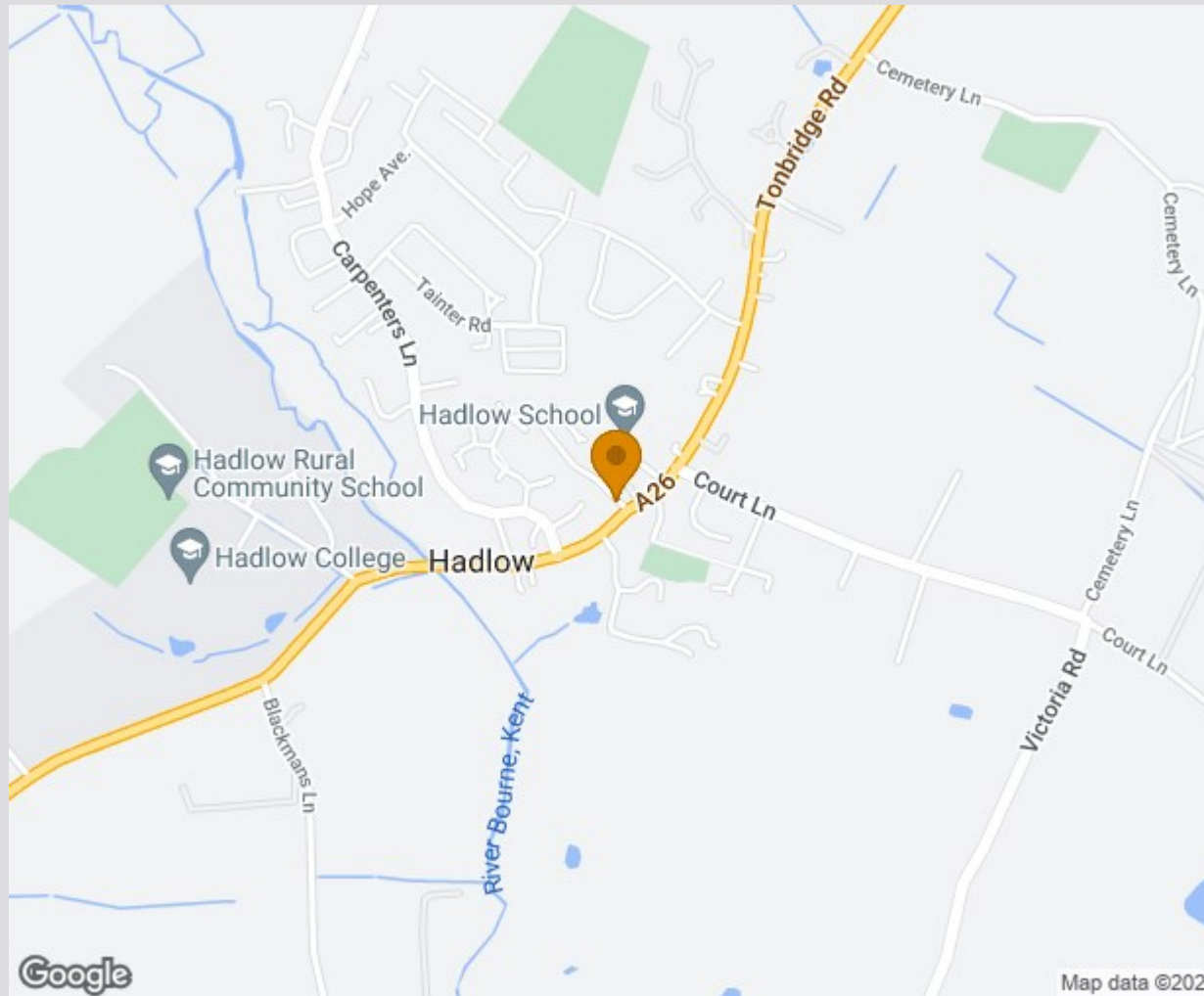




Location Map

Tenure: Leasehold

Council tax band: C



TO VIEW CONTACT: 01732 87 11 11 westmallings@khp.me

www.khp.me



Zoopla.co.uk
Smarter property search

