



## Lower Road

East Farleigh ME15 0HD

£575,000



COUNTRY HOMES

## East Farleigh ME15 0HD

Situated in East Farleigh, this detached house offers a delightful blend of countryside tranquillity and modern living. Boasting two reception rooms, four bedrooms (one downstairs), shower room and bathroom, this property provides ample space for comfortable family living.

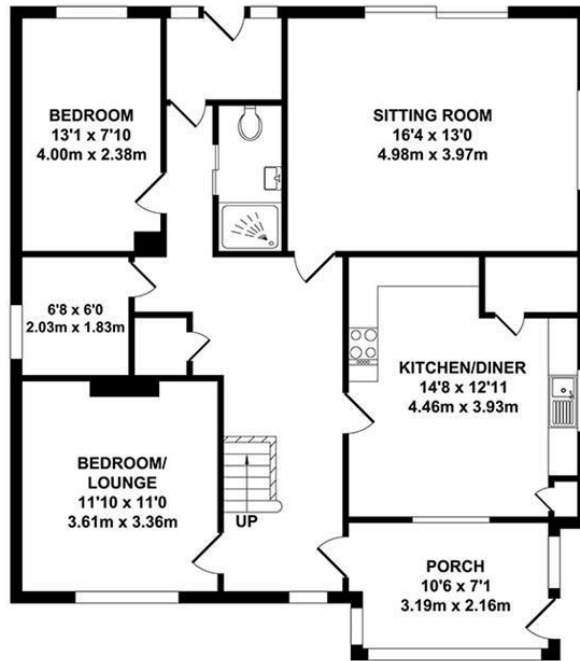
The rural views from this house are far reaching, offering a picturesque backdrop to everyday life. With a blank canvas interior, the property presents a fantastic opportunity to unleash your creativity and design the home of your dreams.

Convenience is key with a private drive, ensuring parking is never a hassle. The downstairs shower room adds a touch of practicality to this property.

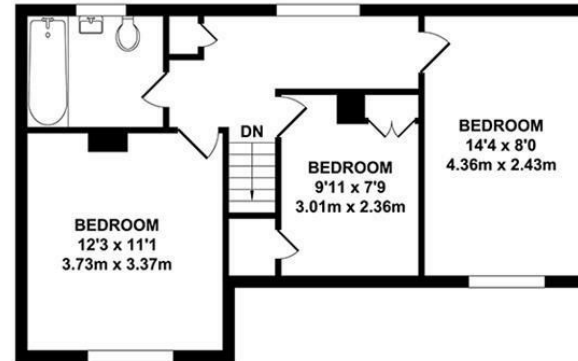
With so much potential waiting to be realised, this house in East Farleigh is more than just a home - it's a canvas for your imagination. Don't miss out on the opportunity to make this property your own slice of countryside paradise. Call now to view.

- Detached
- Potential
- Rural views
- Chain free
- Driveway
- Downstairs shower room
- Popular location
- Viewing encouraged





**GROUND FLOOR**  
 APPROX. FLOOR AREA  
 1037 SQ.FT.  
 (96.33 SQ.M.)



**FIRST FLOOR**  
 APPROX. FLOOR AREA  
 504 SQ.FT.  
 (46.85 SQ.M.)

**TOTAL APPROX. FLOOR AREA 1541 SQ.FT. (143.18 SQ.M.)**

Whilst every attempt has been made to ensure the accuracy of the floor plan contained here, measurements of doors, windows, rooms and any other items are approximate and no responsibility is taken for any error, omission or mis-statement. This plan is for illustrative purposes only and should be used as such by any prospective purchaser. The services, systems and appliances shown have not been tested and no guarantee as to their operability or efficiency can be given.

Zome Media ©2024

Energy Efficiency Rating		Current	Potential
Very energy efficient - lower running costs	A		
	B		
	C		
	D		
	E		
	F		
Not energy efficient - higher running costs	G		
		72	81
England & Wales		EU Directive 2002/91/EC	

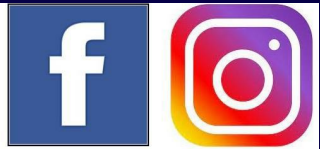




## Location Map

Tenure: Freehold

Council tax band: F



TO VIEW CONTACT: 01732 87 11 11 [westmallings@khp.me](mailto:westmallings@khp.me)

[www.khp.me](http://www.khp.me)



**Zoopla.co.uk**  
Smarter property search

