

35 Pembroke Road, Norwich

£425,000 Freehold

Guide Price £425,000 - £450,000. The quality of this fully renovated three-bedroom home on Pembroke Road is evident from the moment you arrive. Every aspect has been carefully designed to blend period charm with modern style, creating a beautiful turn-key property ready to move into. The home offers light-filled living spaces, a stylish kitchen with gold accents, utility and WC, and three generously sized bedrooms alongside a contemporary family bathroom. Significant upgrades include a brand-new roof, full rewire, new heating system with Worcester boiler, and updated plumbing for complete peace of mind. Outside, a newly laid sandstone patio and smart front path add to the property's appeal, making it perfect for relaxing or entertaining. Located in Norwich's sought-after Golden Triangle, just minutes from the city centre, this home combines convenience, comfort, and exceptional craftsmanship.

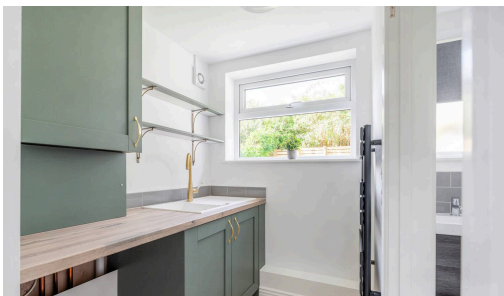
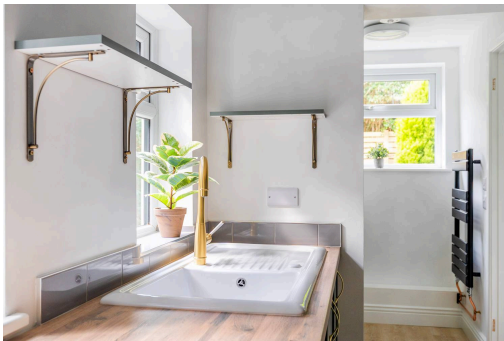
Guide Price £425,000 - £450,000. The quality of this fully renovated three-bedroom home on Pembroke Road is evident from the moment you arrive. Every aspect has been carefully designed to blend period charm with modern style, creating a beautiful turn-key property ready to move into. The home offers light-filled living spaces, a stylish kitchen with gold accents, utility and WC, and three generously sized bedrooms alongside a contemporary family bathroom. Significant upgrades include a brand-new roof, full rewire, new heating system with Worcester boiler, and updated plumbing for complete peace of mind. Outside, a newly laid sandstone patio and smart front path add to the property's appeal, making it perfect for relaxing or entertaining. Located in Norwich's sought-after Golden Triangle, just minutes from the city centre, this home combines convenience, comfort, and exceptional craftsmanship.

The Location

The property enjoys an enviable position just a five-minute drive from the



Guide Price £425,000 - £450,000. The quality of this fully renovated three-bedroom home on Pembroke Road is evident from the moment you arrive. Every aspect has been carefully designed to blend period charm with modern style, creating a beautiful turn-key property ready to move into. The home offers light-filled living spaces, a stylish kitchen with gold accents, utility and WC, and three generously sized bedrooms alongside a contemporary family bathroom. Significant upgrades include a brand-new roof, full rewire, new heating system with Worcester



Guide Price £425,000 - £450,000. The quality of this fully renovated three-bedroom home on Pembroke Road is evident from the moment you arrive. Every aspect has been carefully designed to blend period charm with modern style, creating a beautiful turn-key property ready to move into. The home offers light-filled living spaces, a stylish kitchen with gold accents, utility and WC, and three generously sized bedrooms alongside a contemporary family bathroom. Significant upgrades include a brand-new roof, full rewire, new heating system with Worcester boiler, and updated plumbing for complete peace of mind. Outside, a newly laid sandstone patio and smart front path add to the property's appeal, making it perfect for relaxing or entertaining. Located in Norwich's sought-after Golden Triangle, just minutes from the city centre, this home combines convenience, comfort, and exceptional craftsmanship.

The Location

The property enjoys an enviable position just a five-minute drive from the vibrant centre of Norwich, a beautiful medieval city and the cultural heart of East Anglia. Set within the highly sought-after NR2 postcode, this is one of the most desirable areas in the city—and it's easy to see why. Norwich is a place that truly has something for everyone, offering a lively nightlife, an exciting arts and culture scene, and a fantastic mix of shops, cafés, and restaurants to explore.

Families will appreciate the excellent choice of schools nearby, including well-regarded state, faith, and independent options for all ages. Everyday essentials are within easy reach too, with local shops, supermarkets, and plenty of convenient amenities just around the corner. The area also boasts a great selection of traditional pubs, cosy cafés, and independent boutiques, giving it a real sense of community charm.

For those who love the outdoors, there are several parks and green spaces close by, perfect for a weekend stroll or a picnic with friends. The property is also ideally located for the University of East Anglia and the Norfolk & Norwich University Hospital, making it a practical choice for professionals and families alike.

Situated in the heart of Norwich's famous Golden Triangle, you'll be living in one of the most characterful and vibrant parts of the city, known for its tree-lined streets, welcoming atmosphere, and abundance of local amenities. It's a location that combines convenience, charm, and a great lifestyle—all within easy reach of everything Norwich has to offer.

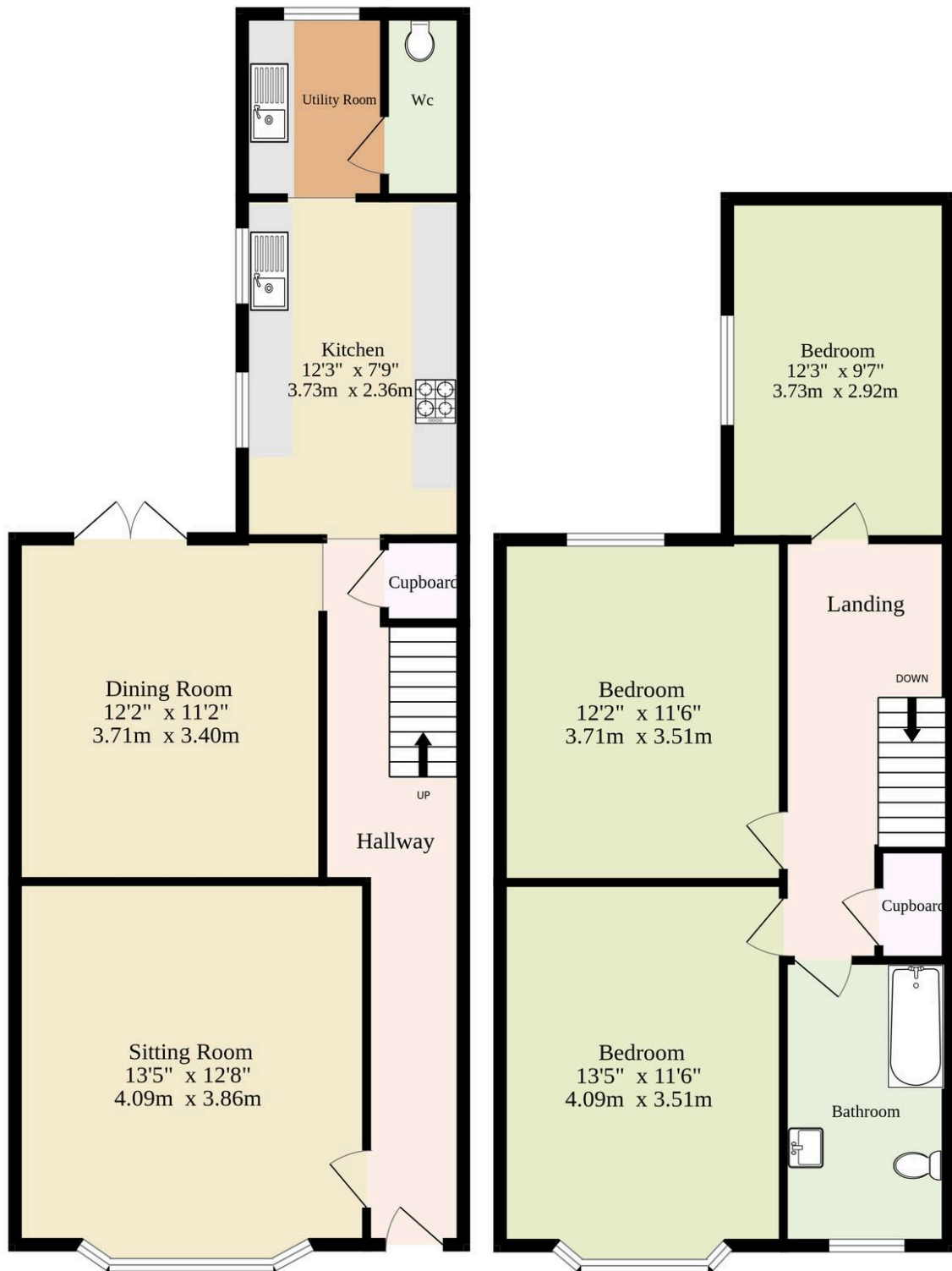
Pembroke Road, Norwich



of a brand-new staircase.

Ground Floor
570 sq.ft. (53.0 sq.m.) approx.

1st Floor
593 sq.ft. (55.1 sq.m.) approx.



TOTAL FLOOR AREA : 1163 sq.ft. (108.0 sq.m.) approx.

Whilst every attempt has been made to ensure the accuracy of the floorplan contained here, measurements of doors, windows, rooms and any other items are approximate and no responsibility is taken for any error, omission or mis-statement. This plan is for illustrative purposes only and should be used as such by any prospective purchaser. The services, systems and appliances shown have not been tested and no guarantee as to their operability or efficiency can be given.
Made with Metropix ©2025

You can include any text here. The text can be modified upon generating your brochure.

You can include any text here. The text can be modified upon generating your brochure.

