



2 The Keys, Brooke

£375,000 Freehold

Guide Price £375,000 - £400,000 The best of both worlds is offered in this four-bedroom property, combining rural living with easy access to central Norwich. Located in the peaceful village of Brooke, it enjoys a quiet, country lifestyle while being just a short drive from the city's vibrant amenities. With no onward chain, this home provides a smooth transition for those looking to move quickly. The property boasts modern living spaces, including a stylish kitchen, inviting dining room, and a spacious sitting room that opens into a light-filled orangery. A private, low-maintenance garden and ample bedroom space complete this perfect home, ideal for family living in a highly desirable location.

Guide Price £375,000 - £400,000

The best of both worlds is offered in this four-bedroom property, combining rural living with easy access to central Norwich. Located in the peaceful village of Brooke, it enjoys a quiet, country lifestyle while being just a short drive from the city's vibrant amenities. With no onward chain, this home provides a smooth transition for those looking to move quickly. The property boasts modern living spaces, including a stylish kitchen, inviting dining room, and a spacious sitting room that opens into a light-filled orangery. A private, low-maintenance garden and ample bedroom space complete this perfect home, ideal for family living in a highly desirable location.

The Location

The Keys is located in the peaceful village of Brooke, offering the perfect blend of rural and convenient amenities. The village itself boasts a village hall, a selection of pubs serving delicious food, including The White Lion and The Kings Head, and regular bus links for easy commuting.



Guide Price £375,000 - £400,000

The best of both worlds is offered in this four-bedroom property, combining rural living with easy access to central Norwich. Located in the peaceful village of Brooke, it enjoys a quiet, country lifestyle while being just a short drive from the city's vibrant amenities. With no onward chain, this home provides a smooth transition for those looking to move quickly. The property boasts modern living spaces, including a stylish kitchen, inviting dining room, and a spacious sitting room that opens into a light-filled



Guide Price £375,000 - £400,000

The best of both worlds is offered in this four-bedroom property, combining rural living with easy access to central Norwich. Located in the peaceful village of Brooke, it enjoys a quiet, country lifestyle while being just a short drive from the city's vibrant amenities. With no onward chain, this home provides a smooth transition for those looking to move quickly. The property boasts modern living spaces, including a stylish kitchen, inviting dining room, and a spacious sitting room that opens into a light-filled orangery. A private, low-maintenance garden and ample bedroom space complete this perfect home, ideal for family living in a highly desirable location.

The Location

The Keys is located in the peaceful village of Brooke, offering the perfect blend of rural and convenient amenities. The village itself boasts a village hall, a selection of pubs serving delicious food, including The White Lion and The Kings Head, and regular bus links for easy commuting.

For essential services, there's a local vet and a church, while the vibrant city of Norwich is just a short distance away. Enjoy the best of both worlds with a quiet country lifestyle and easy access to everything you need.

The Keys, Brooke

This charming four-bedroom property in Brooke offers a mix of rural appeal and convenient proximity to the vibrant heart of central Norwich. Approached via a well-maintained brickweaved driveway, the house is set against a well-kept lawned frontage that invites you in. The integral garage provides practical storage and secure parking, making it easy to come and go. Once inside, a spacious entrance hallway leads the way into the heart of the home, featuring a convenient downstairs WC for added ease.

The modern kitchen is equipped with fitted units, a sleek induction hob, and a sink, ensuring both style and function. With direct access to both the rear of the property and into the dining room, the kitchen provides a smooth flow, perfect for everyday meals and family gatherings.

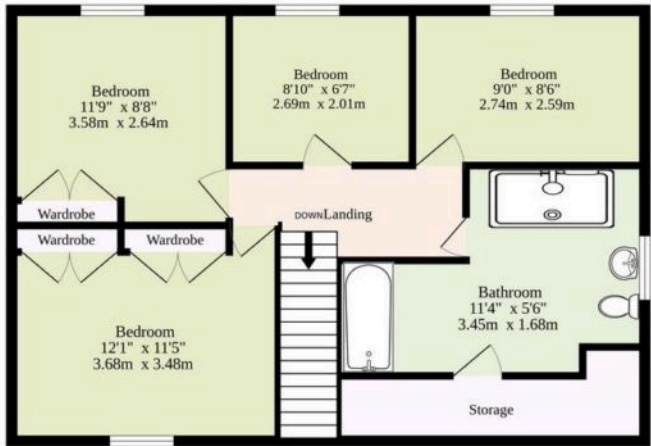
The dining room itself is a warm and inviting space, ideal for shared meals or casual entertaining. Adjacent to this, the sitting room offers a relaxed environment for unwinding, complete with a window and patio doors that open into the orangery. This extension creates a cohesive transition between indoor and outdoor living, flooding the home with natural



Ground Floor
831 sq.ft. (77.2 sq.m.) approx.



1st Floor
523 sq.ft. (48.6 sq.m.) approx.



TOTAL FLOOR AREA : 1354 sq.ft. (125.8 sq.m.) approx.

Whilst every attempt has been made to ensure the accuracy of the floorplan contained here, measurements of doors, windows, rooms and any other items are approximate and no responsibility is taken for any error, omission or mis-statement. This plan is for illustrative purposes only and should be used as such by any prospective purchaser. The services, systems and appliances shown have not been tested and no guarantee as to their operability or efficiency can be given.
Made with Metropix ©2025

You can include any text here. The text can be modified upon generating your brochure.

