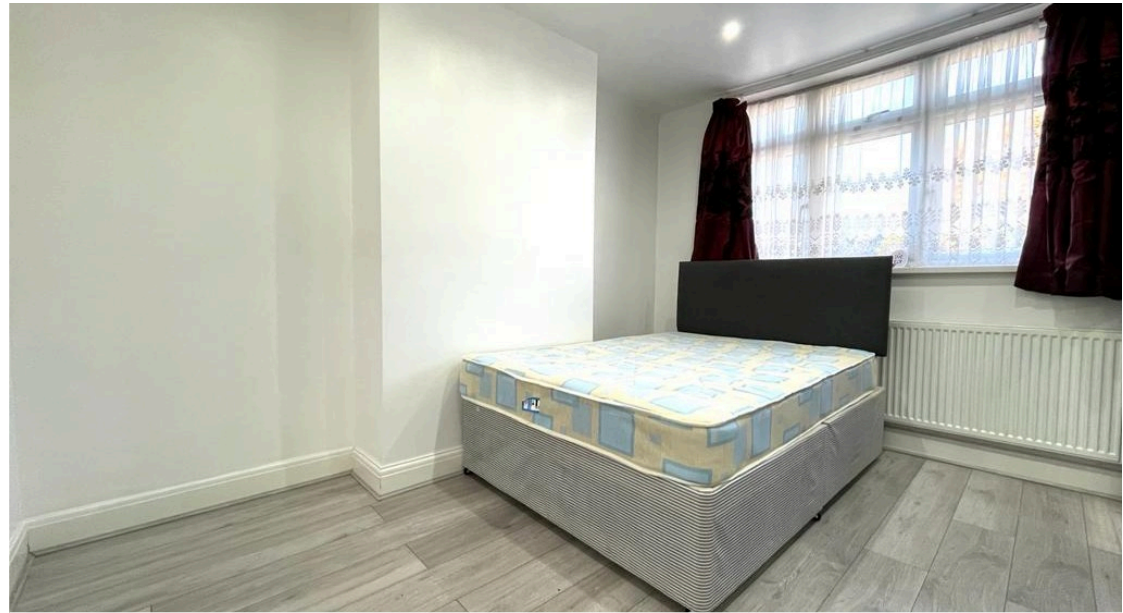
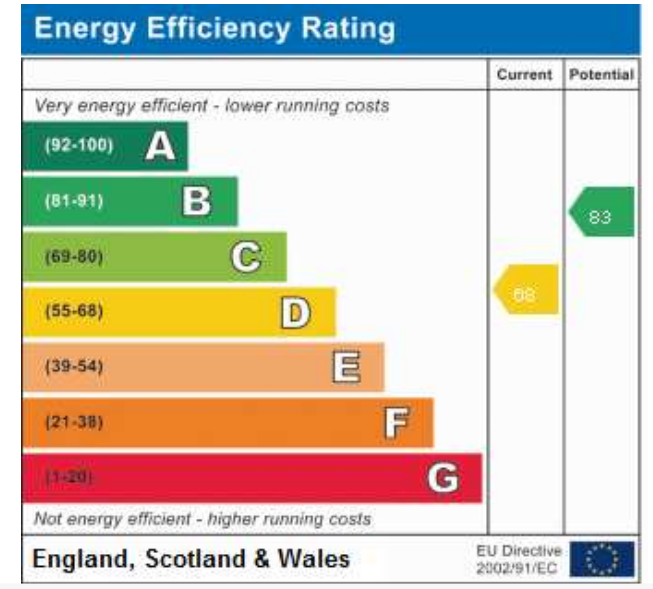
 **4**  
Bedrooms

 **2**  
Bathrooms



A stunning four bedrooms terrace house located beneficially only moments away from Alperton Station (Piccadilly Line) and within walking distance of the popular Ealing Road, shops and amenities. This delightful and bright property comprises a reception, a large kitchen/diner and family bathroom. To the first floor you will find three bedrooms and guest shower room with WC. Further benefits include double glazed windows, gas heating system and rear garden. Available now!





Barham Primary School

Popat Stores

VB & Sons Wembley

One Tree Hill  
Recreation  
Ground

Alperton  
Community School

Shri Ganesha Nidhi  
Hindu...

Alperton London Shootfighters

Loon Fung Alperton

Travelodge  
London Wembley