



23 Park Lane

Guisborough, North Yorkshire, TS14 6LA

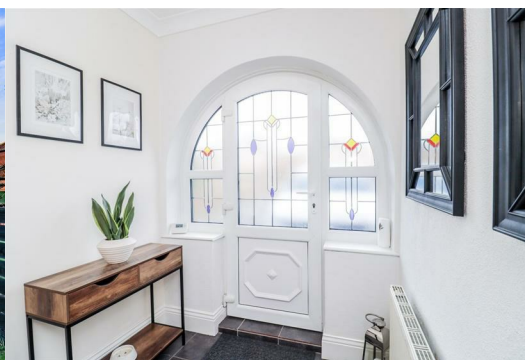
Offers in excess of £290,000



Are You Looking For A Home With An Annex, Ground Floor Bedroom/Bathroom? This Property Would Ideally Suit A Family With Teenagers Or Live In Parents. There Is Also The Option To Work From Home & Could Accommodate A Business Set Up Such As A Beauty Therapist, Nail Technician Or Hairdresser.

A Beautiful Extended Semi-Detached Home In A Popular Location. Spacious Throughout With Kitchen, Dining Room, Generous Lounge With French Doors To The Rear, Three Double Bedrooms With The Master Benefiting Fitted Wardrobes Along With A Dressing Area/Sun Room & Good-Sized Loft Room.

The Property Benefits From An Annex Comprising; Kitchen/Living Space, Double Bedroom & En-Suite Shower Room.



Location:

From The A171 At The Roundabout Take A Turn Onto Middlesbrough Road, Follow The Road & At The Traffic Lights Turn Left Onto Park Lane, The Property Sits On The Right-Hand Side.

- King George V Playing Field - 5 Minute Walk
- Chaloner Primary School - 3 Minute Drive
- Prior Pursglove College - 3 Minute Drive
- High Street, Shops & Pubs - 9 Minute Walk
- Sainsburys, Argos & Lidl - 3 Minute Drive
- The A171 Leads To Whitby & The East Coast - 30 Minute Drive

Distance Times Estimated Using Google Maps.

Accommodation Comprises:

Entrance Hallway

Entrance Door Leads To Dining Room, Lounge, Kitchen, Storage Cupboard & Staircase To First Floor.

Reception Room One

13'4" x 12'3" (4.08m x 3.75m)

Feature Fireplace, uPVC Double Glazed Bay Window, Radiator.

Reception Room Two

20'3" x 12'6" (6.19m x 3.82m)

Feature Fireplace, Radiator, uPVC Double Glazed French Doors To The Rear.

Kitchen

14'11" x 7'1" (4.56m x 2.16m)

Fitted With A Range Of Modern Base, Wall & Drawer Units, Worksurfaces Incorporating Stainless Sink Unit & Mixer Tap, Tiled Splashback, Built In Oven, Gas Hob With Overhead Extractor Fan, Integrated Fridge/Freezer, Space For Appliances, Radiator, uPVC Double Glazed Window & Door To Rear.

First Floor Landing

Access To Bedrooms & Bathroom.

Master Bedroom

13'1" x 10'5" (4.01m x 3.19m)

Fitted Wardrobes, Radiator.

Dressing Room/Sun Room

14'11" x 6'11" (4.55m x 2.13m)

uPVC Double Glazed Windows.

Bedroom Two

14'3" x 10'6" (4.35m x 3.21m)

Fitted Wardrobes, Radiator, uPVC Double Glazed Bay Window.

Bedroom Three

6'11" x 7'1" (2.13m x 2.16m)

uPVC Double Glazed Window, Radiator.

Bathroom

7'3" x 6'4" (2.21m x 1.94m)

Fitted With A White Three Piece Suite Comprising; Hand Wash Basin, Bath, W/C, Radiator, uPVC Double Glazed Window.

Loft Room (Pull Down Ladder)

Full Length With Carpets & Insulation, Skylight Window, Radiator.

Garage/Store Area

Storage Space Only.

Annex Accommodation Comprises:

Lounge/Kitchen

16'5" x 10'5" (5.02m x 3.19m)

Fitted With Base, Wall & Drawer Units, Worksurfaces Incorporating Stainless Steel Sink Unit & Mixer Tap, Space For Appliances, uPVC Double Glazed Windows & French Doors.

Ground Floor Bedroom

11'0" x 10'5" (3.37m x 3.19m)

uPVC Double Glazed Window, Radiator.

Ground Floor Shower Room

Fitted With A Three Piece Suite Comprising; Hand Wash Basin, Shower, W/C, Radiator, uPVC Double Glazed Window.

Energy Efficiency Rating: D

The Full Energy Efficiency Certificate Is Available On Request.

Council Tax Band: C

Estimate £1,878

Disclaimer

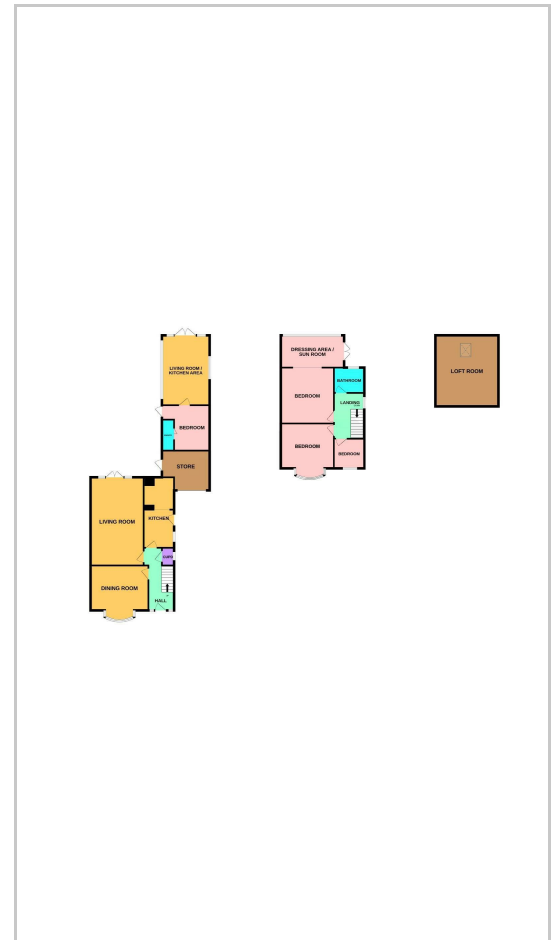
Although Issued In Good Faith, These Particulars Are Not Factual Representations And Are Not A Part Of Any Offer Or Contract. Prospective Buyers Should Independently Verify The Matters Mentioned In These Particulars. There Is No Authority For Harper & Co Estate Agents Limited Or Any Of Its Employees To Make Any Representations Or Warranties About This Property.

While We Try To Be As Accurate As Possible With Our Sales Particulars, They Are Only A General Overview Of The Property. If There Is Anything In Particular That Is Important To You, Please Contact The Office And We Will Be Happy To Check The Situation For You, Especially If You Are Considering Traveling A Significant Distance To View The Property. The Measurements Provided Are Only For Guidance, Thus They Must Be Regarded As Inaccurate. Please Be Aware That Harper & Co Have Not Tested Any Of The Services, Appliances, Or Equipment In This Property; As A Result, We Advise Prospective Buyers To Commission Their Own Surveys Or Service Reports Before Submitting A Final Offer To Purchase. Money Laundering Regulations: In Order To Avoid Any Delays In Finalising The Sale, Intending Buyers Will Be Required To Provide Identification Documentation At A Later Time. Please Cooperate With Us In This Process.

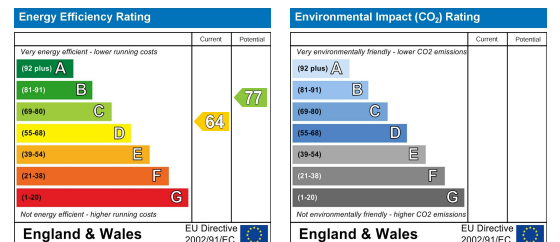
Area Map



Floor Plans



Energy Efficiency Graph



These particulars, whilst believed to be accurate are set out as a general outline only for guidance and do not constitute any part of an offer or contract. Intending purchasers should not rely on them as statements of representation of fact, but must satisfy themselves by inspection or otherwise as to their accuracy. No person in this firms employment has the authority to make or give any representation or warranty in respect of the property.