



## 180 Bishopton Road

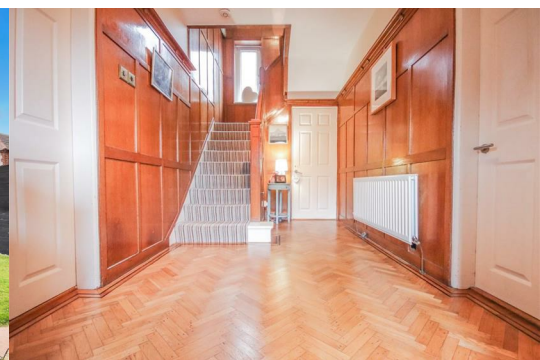
, Stockton-On-Tees, TS18 4PH

**Offers in excess of £290,000**



For Sale With The Advantage Of No Onward Chain! Three Good-Sized Bedrooms & Loft Room With Fixed Staircase. This Beautiful Family Home Has Been Lovingly Maintained By The Current Owners For 37 Years. Individually Designed & Built In The 1930's, A Property Of This Character & Style Rarely Come Up For Sale.

Harper & Co Estate Agents Offer Flexible Viewing Appointments Including Evening & Weekends! You Can Call, Text, WhatsApp Message Or Email Us To Secure Your Booking. Get in Touch Today!



## Location

Positioned On A Corner Plot Of Bishopton Road & Del Strother Avenue This Property Stands Proud & Full Of Character.

Stockton Sixth Form College - 5 Minute Walk  
Sainsburys Whitehouse Farm - 5 Minute Walk  
Saint Bedes Catholic Academy - 6 Minute Walk  
Stockton High Street - 5 Minute Drive  
Grangefield Play Area & Park - 11 Minute Walk  
Many Other Local Shops, Restaurants & Other Local Amenities

Distance Times Are Approximate & Provided By Google Maps.

## Entrance Hallway

Spacious Entrance Hallway With Period Panelling Detail, Herringbone Parquet Flooring, Staircase Leading To First Floor, Door Into Cloakroom W/C, Living Room & Kitchen/ Dining Area, Radiator.

## Ground Floor Cloakroom W.C

White W/C, White Hand Wash Basin, uPVC Double Glazed Window, Radiator

## Living Room

uPVC Double Glazed Bow Window Allowing For Plenty Of Natural Light, Radiator.

## Kitchen

Fitted With A Range Of White Gloss Base & Wall Units, Black Solid Worktops, Incorporating A Black Composite Sink & Chrome Mixer Tap, Island/ Breakfast Bar Feature, Electric Hob With Overhead Extractor Fan, Integrated Electric Oven, Space For American Style Fridge Freezer, uPVC Double Glazed Bow Window, uPVC Double Glazed Patio Doors Leading Into Garden, Radiator.

## Dining Area

Space For Large Family Dining Table, uPVC Double Glazed Window, Radiator.

## Utility Area

Space For Washing Machine, Utilities, uPVC Door Leading Into Garden.

## First Floor Landing

Provides Access To All Three Double Bedrooms & Family Bathroom.

## Bedroom One

Decorated Tastefully With Fitted Sliding Door Wardrobes, Access Into En-Suite Shower Room, uPVC Double Glazed Window, Radiator.

## En-Suite Shower Room

Modern White W/C, White Wash Hand Basic, Large Shower Cubicle With Glass Panel, Wall & Floor Tiles, Radiator.

## Bedroom Two

x3 uPVC Double Glazed Windows, Storage Cupboard, Radiator.

## Bedroom Three

uPVC Double Glazed Window, Radiator.

## Family Bathroom

uPVC Double Glazed Window, Bath With Overhead Shower, White Hand Wash Basin.

## Separate W.C

White W.C, Radiator, uPVC Double Glazed Window.

## Staircase To Loft Room

uPVC Double Glazed Window.

## Loft Room

Staircase Leading Into Converted Large Loft Room, Velux Roof Window.

## Energy Efficiency Rating: D

The Full Energy Efficiency Certificate Is Available On Request.

## Council Tax Band: D

Annual Estimate £2,138

## Disclaimer:

Please note that all Measurements Are Approximate. The Floor Plan Is Not To Scale. The Floor Plan And Photographs Are For Illustrative Purpose Only.

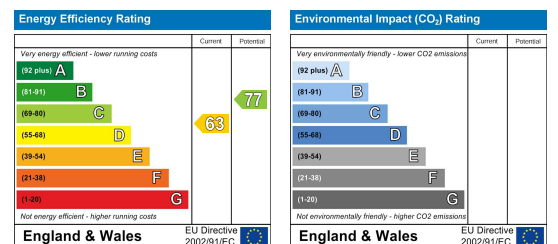
## Area Map



## Floor Plans



## Energy Efficiency Graph



These particulars, whilst believed to be accurate are set out as a general outline only for guidance and do not constitute any part of an offer or contract. Intending purchasers should not rely on them as statements of representation of fact, but must satisfy themselves by inspection or otherwise as to their accuracy. No person in this firm's employment has the authority to make or give any representation or warranty in respect of the property.