



3 Wynyard Mews

Owton Manor, Hartlepool, TS25 3JE

Offers in the region of £27,000



An Ideal Investment Property For Sale With The Advantage Of A Sitting Tenant! Located In A Popular Development, This Two Bedroom Property Is Currently Achieving £375PCM.

Harper & Co Estate Agents Offer Flexible Viewing Appointments Including Evening & Weekends! You Can Call, Text, WhatsApp Message Or Email Us To Secure Your Booking. Get in Touch Today!

Spacious Two Bedroom Maisonette In An Established Area. With Primary And Secondary Schools, Bus Services And An Abundance Of Shops Close By. It Offers Many Desirable Features Such Two Bedrooms, Lounge, Well Proportioned Kitchen, Three Piece Bathroom Suite, Central Heating, uPVC Double Glazing & Parking. There Is A Monthly Service Charge Of £100.00 On The Property And A 99 Year Lease (Approx 68 Years Remaining)

Entrance Hallway

Living Room

Kitchen

Bedroom One

Bedroom Two

Bathroom

Energy Efficiency Rating; E

The Full Energy Efficiency Certificate Is Available On Request.

Council Tax Band: A

Annual Estimate £1,46

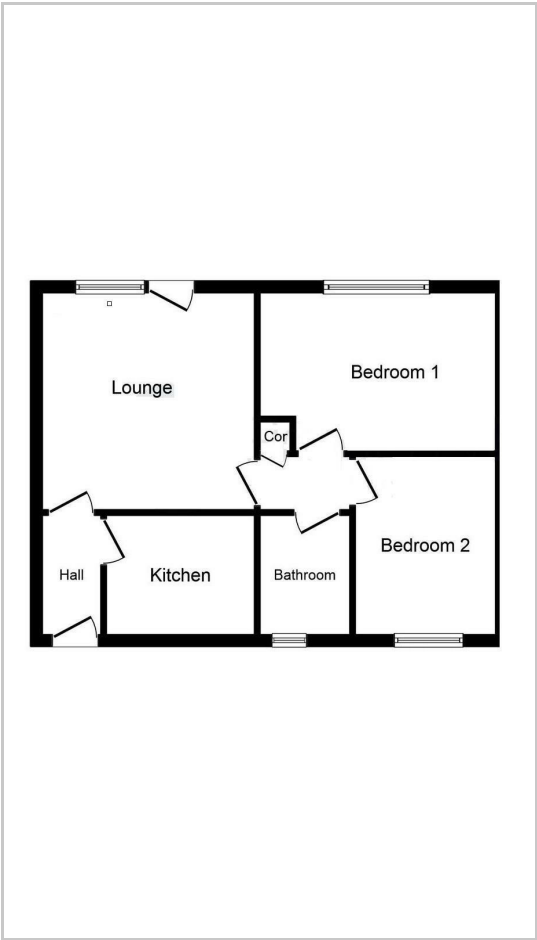
Disclaimer

Please note that all Measurements Are Approximate. The Floor Plan Is Not To Scale. The Floor Plan And Photographs Are For Illustrative Purpose Only.

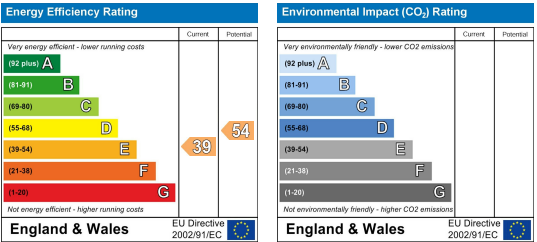
Area Map



Floor Plans



Energy Efficiency Graph



These particulars, whilst believed to be accurate are set out as a general outline only for guidance and do not constitute any part of an offer or contract. Intending purchasers should not rely on them as statements of representation of fact, but must satisfy themselves by inspection or otherwise as to their accuracy. No person in this firms employment has the authority to make or give any representation or warranty in respect of the property.