

Butler's

thoughtful estate agency

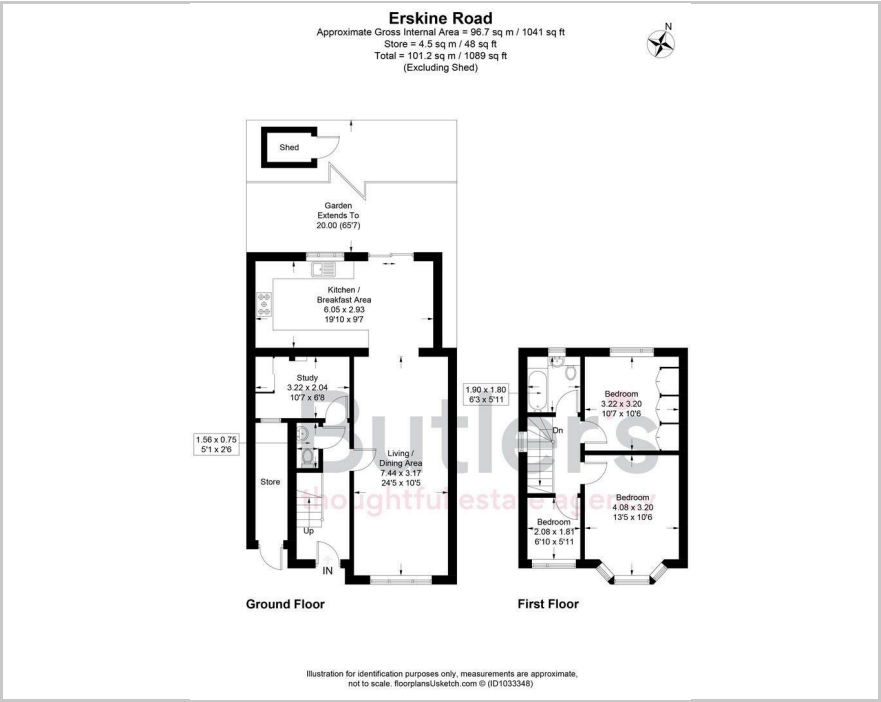


Erskine Road, Sutton, SM1 3AT
£2,350 Per month

thoughtful estate agency



Floor Plan



Area Map



Accommodation

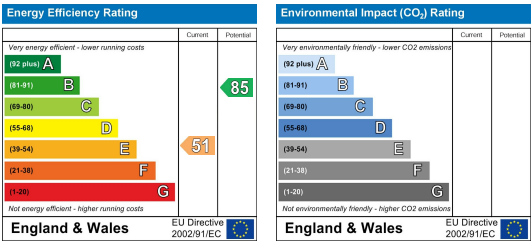
- Semi Detached House
- Desirable Location
- Modern Kitchen
- Driveway Parking
- Private Garden
- Available Early February



Viewing

Please contact our Butler's Lettings Office on 020 39 170 160 if you wish to arrange a viewing appointment for this property or require further information.

Energy Efficiency Graph



These particulars, whilst believed to be accurate are set out as a general outline only for guidance and do not constitute any part of an offer or contract. Intending purchasers should not rely on them as statements of representation of fact, but must satisfy themselves by inspection or otherwise as to their accuracy. No person in this firm's employment has the authority to make or give any representation or warranty in respect of the property.