

# Butler's

thoughtful estate agency



Oliver Road  
Sutton, SM1 4QF

Guide price £490,000



## Oliver Road

Sutton, SM1 4QF

GUIDE PRICE £490,000 - £510,000

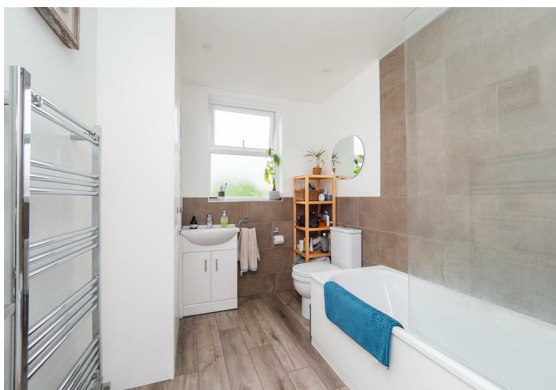
Nestled in one of Sutton's most coveted & convenient roads, this handsome, end-of-terrace period home has so much to offer, both inside and out. Firstly, we have to talk location. Oliver Road will surpass your expectations, as it's just a quick stroll into the high street, with you having outstanding schooling in close proximity. Buses and Sutton mainline station provide quick links into the City, so it will be 'sofa to London' in well under an hour, amazing! Despite all of this, sitting in your level, southerly-facing rear garden, you'd be forgiven for thinking you were on holiday - a tranquil space for you to enjoy a good book, catch some rays or even have a few friends over.

Inside your home, you'll appreciate the abundance of period features and charm, with the current owners' fastidious nature meaning you can just pack your bags and move straight in.

Work from home? We have great news for you! The layout of the ground floor offers a huge amount of versatility, with a cosy lounge and separate dining room. You can keep productive in your own personal space to give you that work/life balance, snuggle up on the sofa with loved ones or even hold those dinner parties in the kitchen/diner you've been dreaming of for some time now.

If we're on the money with the latter, the aforementioned, kitchen means you can cook up a storm in what is a stylish & truly well thought out and designed place for you to enhance your culinary skills!

Upstairs, this house doesn't let you down as there are two double bedrooms, including an wonderful master, with a landing leading to a family bathroom, which is sympathetically done and incredibly spacious, which serves all of the rooms.





## GROUND FLOOR

Living Room  
13'7 x 12' maximum (4.14m x 3.66m maximum)

Dining Room  
12'8 x 12'4 (3.86m x 3.76m)

Kitchen  
9'1 x 6'8 (2.77m x 2.03m)

## FIRST FLOOR

Landing

Bedroom  
13'6 x 9'5 (4.11m x 2.87m)

Bedroom  
12'9 x 8'2 maximum (3.89m x 2.49m maximum)

Bathroom  
9'3 x 6'10 (2.82m x 2.08m)

## OUTSIDE

Front Garden

Rear Garden



## Floor Plan

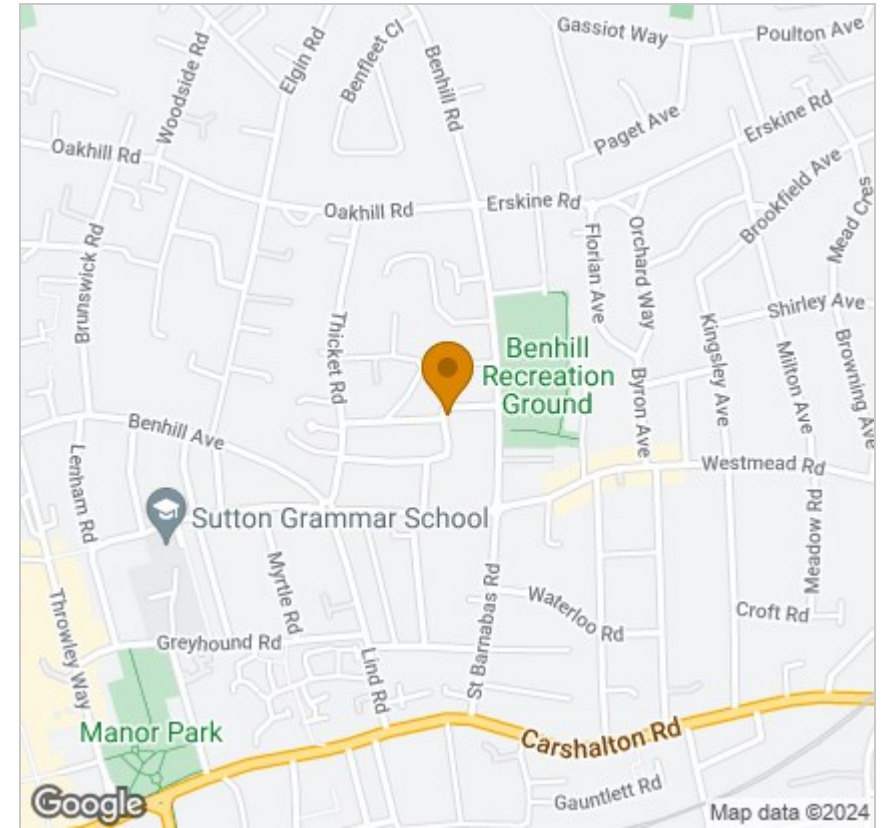


## Viewing

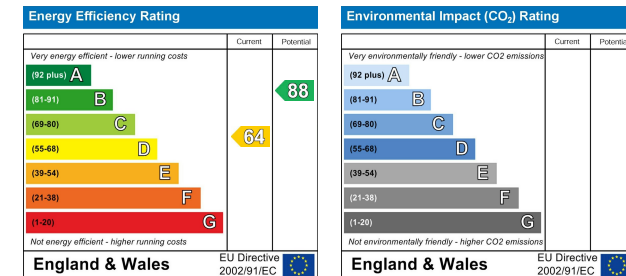
Please contact our Butler's Sales Office on 020 39 170 160 if you wish to arrange a viewing appointment for this property or require further information.

18 Sutton Plaza, Sutton, Surrey, SM1 4FS  
Tel: 020 39 170 160 Email: hello@butlershomes.co.uk butlershomes.co.uk

## Area Map



## Energy Efficiency Graph



These particulars, whilst believed to be accurate are set out as a general outline only for guidance and do not constitute any part of an offer or contract. Intending purchasers should not rely on them as statements of representation of fact, but must satisfy themselves by inspection or otherwise as to their accuracy. No person in this firm's employment has the authority to make or give any representation or warranty in respect of the property.